

Merionethshire Rare Plant Register

Sarah Stille



Merionethshire Vice-county 48 Rare Plant Register – first draft

Sarah Stille

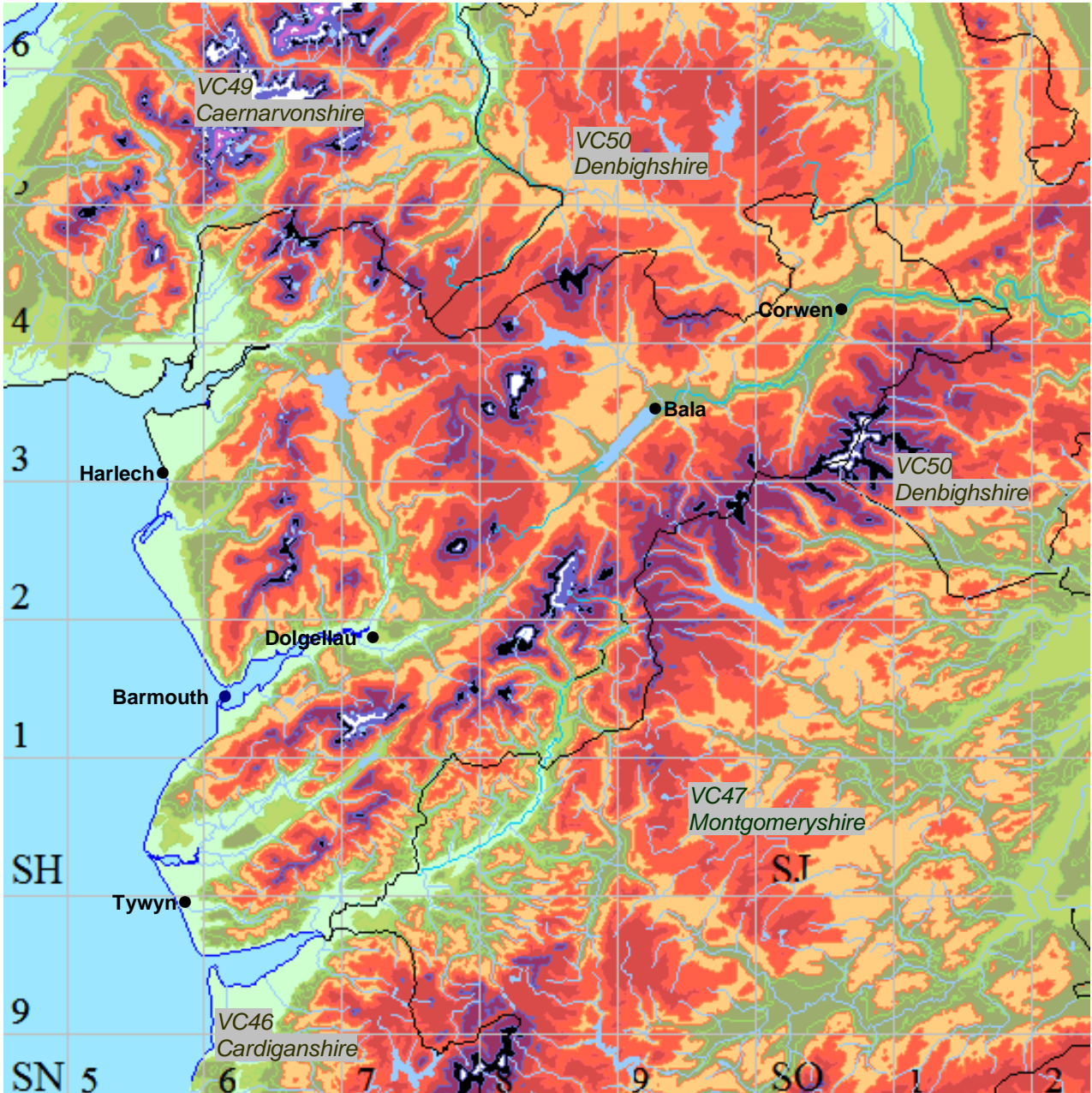
May 2014

Contents

Introduction	2
References	3
Abbreviations used in the tables	4
Table 1: Taxa not included in main register (not scarce)	5
Table 2: Rare Plant Register	8



Map of Vice-county 48 Merionethshire



Introduction

The first draft of this Rare Plant Register [RPR] includes all available records made from 1970 onwards. The majority of records are on the database of the Botanical Society of Britain and Ireland and until 2000 were gathered for the New Atlas of 2002 and collated at hectad level. Many of the underlying data for these records are not available to the Society at this time. Since then with a change of focus, greater detail is now generally available for modern records.

Current BSBI policy is to sample, at least to tetrad resolution, over the whole country in the years running up to the publication of the next Atlas [scheduled for 2020]. The new records for Merioneth will be incorporated into an updated version of this RPR as available.

A further 186 records were accessed from the North Wales Environmental Information Service [**Cofnod**] with grid references supplied by them. Many of these refer to site centroids only, so they do not reflect an accurate location.

The plants included in this register are those recorded from 1970 onwards, in 12 sites or less [**Scarce**] or in 4 sites or less [**Rare**]. Plants whose records are of doubtful provenance, or which have not been recorded for 40 years or more or are known extinctions, are included in the register, without any records. Plants with more than 12 records but which are of interest for their relative scarcity are listed in Table 1.

As far as possible grid references are given here to the resolution recorded, although 10-figure references have in general been reduced to 8 figures and certain sensitive taxa have also had their grid references redacted. A plus sign [+] after a grid reference indicates that plants have also been seen at nearby stations. Bona fide researchers may request further details from the vice-county recorder if required. It should be obvious that the sites are usually on private land and the landowner's permission should always be sought before visiting, even if they are on footpaths or Open Access sites.

As in most of Britain and Ireland, changes in land use and management have contributed to much loss of habitat and the disappearance of many species. As an example the change from arable farming in the Dee valley has led to the loss of many archeophytes such as *Glebionis segetum*, Corn Marigold and *Lamium amplexicaule*, Henbit Dead-nettle. Other activities affecting the flora include tourist developments, excessive or badly-timed roadside verge management, and the draining of wetlands. After the end of the Victorian fern craze, there have perhaps been fewer losses of rare plants to collectors but it is important to be aware that this can happen. However, it is now thought that knowledge of sites is the preferred approach to avoid further damage or loss.

My thanks go first and most importantly to Peter Benoit who was Vice-county Recorder for Merioneth for the greater part of the twentieth century. As a young man he co-wrote ***A Contribution to a Flora of Merioneth***, and brought it to publication in 1963, while his co-author, Mary Richards, was

mostly working in Africa. He continued to dedicate his life to the Vice-county and its flowering plants and bryophytes, until his retirement in 2010. He was generous with his teaching and his time and I have happy memories of many long days in the field with him. Until now, "The Contribution" has been the only point of reference for botanists in Merioneth and it is hoped that this Rare Plant Register will now go some way to filling a need.

David Pearman – as Hon. General Secretary of the BSBI and Chairman of Records Committee – made strenuous efforts to get this Rare Plant Register underway, including drawing up a preliminary list of taxa, which made my task very much easier and his initiative is warmly acknowledged.

I am grateful to the BSBI Welsh Officers, Polly Spencer-Vellacott and Paul Green for their help and support, both with data management and in the field. I am particularly grateful to friends in the Merioneth Naturalists Group/Grwp Natur Meirionnydd, for their continuing enthusiasm and help, and to all who have supplied so many good records. Thanks also to Cofnod for allowing ready access to their records. Farmers and other landowners have also been very generous in allowing access to their land and that is much appreciated. More resources, and information on the local recording group can be found at <http://bsbi.org.uk/merioneth.html>, Please send new records to me as contributions are always very welcome.

Sarah Stille
BSBI Vice-county Recorder
VC 48 Merioneth
mossysal@btinternet.com
Blog at <http://merioneth48.blogspot.co.uk/>

References:

Benoit P M & Richards H M, 1963, A Contribution to a Flora of Merionethshire, West Wales Naturalists' Trust, Haverfordwest

Chater, A O, 2010, A Flora of Cardiganshire, Aberystwyth

Cofnod: North Wales Environmental Information Service; www.cofnod.org.uk

Cymdeithas Edward Llwyd, 2003, Planhigion Blodeuol, Conwydd a Rhedyn, Wasg Carreg Gwalch

Dines, T D, 2008, A Vascular Plant Red Data List for Wales; Plantlife

Ellis, R G, 1983, Flowering Plants of Wales, National Museum of Wales

Jermy, A C, Simpson, D A, Foley, M J Y and Porter, M S, 2007, Sedges of the British Isles BSBI Handbook No 1, 3rd Ed, BSBI London

Jones, D A, 1898, A Handbook to the Botany of Merionethshire, North Wales, Manuscript in National Museum of Wales.

Preston C D, Pearman D A and Dines T D, 2002, New Atlas of the Flora of Britain and Ireland, Oxford University Press

Rich, T C G, Houston, L, Robertson, A and Proctor, M, 2010, Whitebeams, Rowans and Service Trees of Britain and Ireland, BSBI Handbook 14, Botanical Society of the British Isles

Stace, C A, 2010, New Flora of the British Isles, 3rd Ed. Oxford University Press

Vice-county Census Catalogue, BSBI, accessed at:
<http://www.botanicalkeys.co.uk/flora/vccc/findvcccplant.asp>

Abbreviations used in the tables:

BSBI	The Botanical Society of Britain and Ireland [formerly The Botanical Society of the British Isles]
CCW	The Countryside Council for Wales/Cyngor Cefn Gwlad Cymru, now Natural Resources Wales/Cyfoeth Naturiol Cymru [NRW]
DDb	The BSBI Distributional Database
Herb. BM	Voucher specimen in the Herbarium of the Natural History Museum
Herb. K	Voucher specimen in the Herbarium at Kew
Herb. NMW	Voucher specimen in the Herbarium on the National Museum of Wales
Herb. SES	Voucher in Herbarium of Sarah Stille, Vice-county Recorder
Herb. SUN	Voucher specimen in Sunderland Museum
PMB	Peter Benoit, Recorder for Merioneth from the 1930s to 2010.
Section 42	Section 42: <i>Natural Environment & Rural Communities Act 2006</i> : a list of species of principal importance for conservation of biological diversity in Wales
VCCC	The Vice-county Census Catalogue maintained by the BSBI
WPR	Welsh Plant Records

Table 1: Not scarce: taxa of interest with more than 12 VC48 sites

<i>Asplenium viride</i>	Green spleenwort	Duegredynen werdd	Native
Perhaps sites under-visited - generally found where there is suitable habitat.			
<i>Carex pendula</i>	Pendulous sedge	Hesgen bendrom	Native
12 sites including an early record from SH53: all treated as native, although most perhaps are not. [Jermy et al, 2007].			
<i>Circaea x intermedia = C alpina x lutetiana</i>	Hybrid enchanter's-nightshade	Llysiâu-Steffan croesryw	Native hybrid
Recorded in 14 hectads since 1970.			
<i>Convolvulus arvensis</i>	Field bindweed	Cwlwm y cythraul	Native
A need for modern records. [Treated as a neophyte in VCCC].			
<i>Dactylorhiza fuchsii</i>	Common spotted-orchid	Tegeirian brych	Native
Older records from SH61, SH73, SH81 SH92, SH93 and SJ04.			
<i>Dactylorhiza incarnata s.l.</i>	Early marsh-orchid	Tegeirian-y-gors cynnar	Native
Need for updating and localising of records. Old records from SH61, SH63, SH82 and SN69.			
<i>Eleocharis acicularis</i>	Needle spike-rush	Ysbigfrwynen fain	Native
Perhaps under-recorded?			
<i>Eleocharis quinqueflora</i>	Few-flowered spike-rush	Ysbigfrwynen goch	Native
A need for updating.			
<i>Epilobium parviflorum</i>	Hoary willowherb	Helyglys lledlwyd	Native
<i>Equisetum sylvaticum</i>	Wood horsetail	Marchrawnen y coed	Native
<i>Galium uliginosum</i>	Fen bedstraw	Briwydd y fign	Native
A plant of less-acid bogs: possibly overlooked and uncommon but hardly scarce. Older records from SH62 and SH83.			
<i>Hymenophyllum tunbrigense</i>	Tunbridge filmy-fern	Rhedynach teneuwe Tunbridge	Native
In several sites in 10 hectads and perhaps, like <i>H. wilsonii</i> , it is not scarce. The Merioneth Oakwoods [Coedydd Derw] are a centre for this species of international importance. Earlier records from SH52 and SH54.			
<i>Juncus acutus</i>	Sharp rush	Brwynen lem	Native
This Merioneth speciality is found all along the coast.			
<i>Juniperus communis subsp. communis</i>	Common Juniper	Merywen	Native

Welsh Status: Section 42

Now better surveyed following Plantlife's initiative in 2004/5. *J. communis* has not regularly been recorded to subsp so the distinction between the two subsp may be inaccurate.

Not scarce: taxa of interest with more than 12 VC48 sites

<i>Juniperus communis subsp. nana</i>	Juniper	Merywen'r mynydd	Native
Now better surveyed following Plantlife's initiative in 2004/5.			
<i>Lycopodium clavatum</i>	Stag's-horn clubmoss	Cnwp-fwsogl corn carw Welsh Status: Section 42	Native
Scattered records from 18 upland hectads since 1970.			
<i>Lysimachia nummularia</i>	Creeping-jenny	Siani lusg	Native
Scattered: records are mostly old.			
<i>Neottia cordata</i>	Lesser twayblade	Caineirian bach	Native
Probably not scarce - Found in 14 hectads since 1970. It is found scattered wherever it is searched for, in suitable habitat.			
<i>Osmunda regalis</i>	Royal fern	Rhedynen gyfrdwy	Native
<i>Persicaria amphibia</i>	Amphibious bistort	Canwraidd y dŵr	Native
<i>Platanthera chlorantha</i>	Greater butterfly-orchid	Tegeirian llydanwyrdd	Native
National status: Near threatened			
Probably not scarce but an urgent need for updating. Not recently recorded in SH52, SH61, SH62, SH64, SH70, SH73 and SH74, probably through loss of habitat.			
<i>Polystichum aculeatum</i>	Hard-shield fern	Gwrychredynen galed	Native
Hardly scarce although records need updates.			
<i>Polystichum setiferum</i>	Soft shield-fern	Gwrychredynen feddal	Native
<i>Puccinellia maritima</i>	Common salt-marsh-grass	Gwellt y morfa	Native
<i>Rorippa nasturtium-aquaticum</i>	Water-cress	Berwr y dŵr	Native
Earlier taxonomy unclear.			
<i>Saxifraga hypnoides</i>	Mossy saxifrage	Tormaen llydandroed	Native
National status: Vulnerable			
10 hectads, 15 sites.			
<i>Schoenoplectus lacustris</i>	Common club-rush	Llafrwynen	Native
<i>Sedum forsterianum</i>	Rock stonecrop	Briweg Gymreig	Native
Better recorded recently and not now considered scarce.			
<i>Sedum rosea</i>	Roseroot	Pren y ddannoedd	Native
Frequently found on suitable, calcareous cliffs.			
<i>Serratula tinctoria</i>	Saw-wort	Dant y pysgodyn	Native
Many early sites lost but still hardly scarce, although many post-1970 records are in need of updating.			

Not scarce: taxa of interest with more than 12 VC48 sites

<i>Spergula arvensis</i>	Corn spurrey	Troellig yr ŷd	Native
National status: Vulnerable			
23 site records.			
<i>Spergularia rubra</i>	Sand spurrey	Troellig arfor coch	Native
<i>Tanacetum parthenium</i>	Feverfew	Y wermod wen	Archaeophyte
<i>Thalictrum minus</i>	Lesser meadow-rue	Arianllys bach	Native
Most records in need of updating.			
<i>Tilia cordata</i>	Small-leaved lime	Pisgwydden dail bach	Native
<i>Trichomanes speciosum</i> (gametophyte)	Killarney fern	Rhedynen Cilarne	Native
Records from 7 hectads but under-recorded in recent times.			
<i>Trollius europaeus</i>	Globeflower	Cronnell	Native
Welsh Status: Section 42			
Well-recorded as befits its status but good that there are so many recent records. An older record only from SH61.			
<i>Vaccinium vitis-idaea</i>	Cowberry	Llusen goch	Native
Abundant in the Arenig area [SH83].			
<i>Viburnum opulus</i>	Guelder rose	Gwifwrnwydden y gors	Uncertain
<i>Vicia orobus</i>	Wood bitter-vetch	Ffacbysen chwerw	Native
National status: Near threatened			
Welsh Status: Section 42			
Hardly scarce in spite of its priority status: it hangs on on roadside verges where it is protected from grazing and the predations of roadside verge management. There are old records from SH61 and SH82 and probably other sites from within some of the listed hectads.			
<i>Viola canina</i>	Heath dog-violet	Fioled y cŵn	Native
National status: Near threatened			
Not infrequent on the dunes; perhaps gone from SH72 and SN69.			
<i>Viola lutea</i>	Mountain pansy	Trilliw y mynydd	Native
Sheep-grazed and so rarely seen. 16 sites since 1970.			

Table 2: Merionethshire Vice-county 48 Rare Plant Register – first draft

Acer campestre

Field maple

Masarnen fach

Native

Local status: Scarce

Site	Gridref	Year	Comment	Protection
Ffestiniog	SH70654075	2000	Cofnod	
Cwm Cau	SH7211	2012		SSSI, SAC, NNR
Llyn Tegid	SH9235	2012		SSSI, SAC, Ramsar
Ty'n y Coed	SH93M	2011		SSSI, SAC
VC48 Merionethshire	SJ04	1987		
Glyndyfrdwy, Nant y Pandy	SJ14074114	2007		
Glyndyfrdwy	SJ14L	2004		SSSI, SAC
Glyndyfrdwy, Pen y Garth	SJ14R	2004		SSSI, SAC

Most records are hedge plantings but there are fine mature trees near Corwen [SJ04] and at Glyndyfrdwy [SJ14].

Aethusa cynapium

Fool's parsley

Geuberllys

Archeophyte

Local status: Rare

Site	Gridref	Year	Comment	Protection
VC48 Merionethshire	SH63	1999		
Hengwrt, Dolgellau	SH718188	1998	Cofnod	
VC48 Merionethshire	SJ04	1987		

No post-millennium records for either subsp. Listed as native. Many older records from SH52, SH60, SH61 and SH93.

Agrimonia procera

Fragrant Agrimony

Llyisiau'r-dryw pêr

Native

Local status: Scarce

Site	Gridref	Year	Comment	Protection
VC48 Merionethshire	SH52	1986		
VC48 Merionethshire	SH63	1999		
VC48 Merionethshire	SJ03	1971		
Caer Drewyn	SJ04X	2009		SSSI, SAC
VC48 Merionethshire	SJ14	1974		

Most records needing updating - old records at SH50, SH61, SH70, SH71 and SH93.

Agrostis gigantea

Black bent

Maeswellt mawr

Archaeophyte

Local status: Scarce

Site	Gridref	Year	Comment	Protection
VC48 Merionethshire	SH53	1999		
Dragon Theatre, Barmouth	SH61	2006		
Cwm Nantcol	SH62I	2011		SSSI, SAC
Trawscoed	SH846326	1991		
Cors y Sarnau	SH972390	1989	Cofnod	SSSI
Llangar	SJ04R	2005		SSSI, SAC
Corwen	SJ0843	1987		SSSI, SAC

Also old record at Penrhyndeudraeth Station, 1963 [SH63].

Alchemilla filicaulis* subsp. *filicaulis

Slender Lady's-mantle

Mantell-Fair goesfain

Native

Local status: Scarce

Site	Gridref	Year	Comment	Protection
VC48 Merionethshire	SH61	1987		
VC48 Merionethshire	SH73	1971		
VC48 Merionethshire	SH74	1987		
Foel Offrwm	SH74812108	2013		
VC48 Merionethshire	SH82	1987		
VC48 Merionethshire	SH83	1987		
VC48 Merionethshire	SJ0743	2003		SSSI, SAC

Most records very old e.g. in SH62, SH7114, SH7217 and SH7522. Perhaps under-recorded.

Alchemilla filicaulis* subsp. *vestita

Hairy Lady's-mantle

Mantell-Fair flewog

Native

Local status: Scarce

Site	Gridref	Year	Comment	Protection
Muriau Gwyddelod	SH586305	1992		SSSI
Allt-goch	SH599263	1992		
Blaen Nanmor	SH637474	2011		48
Cadair Idris	SH71	1984		SSSI, SAC
Bwlch Coch	SH71M	2009		SSSI, SAC
Tir Stent	SH753162	1986		SSSI, SAC
Llyn y Garn	SH7536	2013		SSSI, SAC
Cae-heuad	SH7722	2013		
Cefn Rofft	SJ0049	2013		SSSI
Tai-teg	SJ038493	1996		

Perhaps under-recorded: old records in SH7522 and SH93.

Allium vineale

Wild onion

Nionyn gwyllt

Native

Local status: Rare

Site	Gridref	Year	Comment	Protection
VC48 Merionethshire	SH50	1986		
VC48 Merionethshire	SH53	1999		
VC48 Merionethshire	SH61	1999		
Trawscoed	SH845327	2012		

Old records in SH52 and SH64.

Alopecurus aequalis

Orange foxtail

Cynffonwellt melyngoch

Native

Local status: Probably extinct

Last record Mochras [SH51], 1961 [PMB].

Anacamptis morio

Green-winged orchid

Tegeirian y waun

Native

Local status: Rare

National status: Near threatened

Site	Gridref	Year	Comment	Protection
VC48 Merionethshire	SH52	1999		
Morfa Harlech	SH5632	2004	Cofnod	SSSI, SAC, NNR
Cae Glan Mor	SH574316	1993	Cofnod	SSSI, SAC

Many sites have been destroyed; now rare. Old records in SH61, SH93, SN59 and SN69.

Anacamptis pyramidalis

Pyramidal orchid

Tegeirian bera

Native

Local status: Scarce

Site	Gridref	Year	Comment	Protection
Tywyn, Afon Dysynni Estuary	SH50+	2011		
VC48 Merionethshire	SH566028	1974		SSSI, SAC
Harlech Dunes, Morfa Harlech	SH568321	2009		SSSI, SAC
Bennar	SH5722	2002		SSSI, SAC
Fairbourne Spit	SH614145	2007		SSSI, SAC
Aberdyfi Dunes	SN59	2011		

Locally abundant in SH50 and SN59. Scarce elsewhere.

Anagallis minima* see *Centunculus minimus

Anchusa arvensis

Bugloss

Llyisiau'r-gwrid y tir âr

Archaeophyte

Local status: Rare

Site	Gridref	Year	Comment	Protection
VC48 Merionethshire	SH52	1999		
Morfa Harlech	SH568334	2011		SSSI, SAC
VC48 Merionethshire	SH61	1986		
VC48 Merionethshire	SN69	1972		

Probably always rare in the county.

Andromeda polifolia

Bog-rosemary

Andromeda'r gors

Native

Local status: Rare

Site	Gridref	Year	Comment	Protection
Arthog Bog	SH61H	2004		SSSI, SAC
Llyn Barfog	SH654989	2011		SSSI
Cors Coch	SH699344+	2011		SSSI, SAC

A recent record [2006] reported from the Berwyns [SH03] but not confirmed to be on the Merioneth side of the border. Also, an old record in Coed y Brenin forest, SH72.

Antennaria dioica

Mountain everlasting

Edafeddog y mynydd

Native

Local status: Rare

Site	Gridref	Year	Comment	Protection
VC48 Merionethshire	SH61	1999		
Cae-heuad	SH773230	2013		
Trawscoed	SH823344	2012		SSSI, SAC

Benoit & Richards [1963] record this species also from Mochras [SH52], Cwm Aran, Geugraig and Llyn Gafr [SH71] and Rhobell [SH72].

Anthyllis vulneraria

Kidney vetch

Plucen felen

Native

Local status: Scarce

Site	Gridref	Year	Comment	Protection
Tonfanau	SH50R	2012		SSSI, SAC
VC48 Merionethshire	SH51	1987		
Harlech Forest	SH53R	2003		SSSI, SAC, NNR
Dalar, Afon Ysgethin	SH5721	2013		SSSI, SAC
Morfa Harlech NNR	SH5731	2013		SSSI, SAC, NNR
Fairbourne S	SH61B	2011		SSSI, SAC
Aberdyfi Golf Course	SN5997	2012		SSSI, SAC

Scarce but not uncommon in coastal sites. Not recently recorded in SN69.

Apium graveolens

Wild celery

Seleri gwyllt

Native

Local status: Scarce

Site	Gridref	Year	Comment	Protection
Tonfanau	SH50R	2009		SSSI, SAC
VC48 Merionethshire	SH53	1999		
Morfa Dyffryn	SH5525	2006	Cofnod	SSSI, SAC, NNR
VC48 Merionethshire	SH61	1986		
VC48 Merionethshire	SH64	1986		
Afon Dwyrdd above Gelli-grin	SH6439	1991		SSSI, SAC

Older records in SH52 [R. Ysgethin, 1949] and SH71.

Arabis hirsuta

Hairy rock-cress

Berwr-y-cerrig blewog

Native

Local status: Rare

Site	Gridref	Year	Comment	Protection
Llyn y Gafr pillow lavas	SH71B	2009		SSSI, SAC, NNR
VC48 Merionethshire	SH73	1999		
Craig Ty-nant	SH82V	1995		SSSI
Ogof Ddu, N facing cliffs	SH894213	1993		

Older records: SH61, SH62, and from SH71 [1963] on other parts of Cadair Idris [Cwm Geugraig, Cwm Cau and Cwm Aran] and SH93, Llandderfel [1888].

Arabis petraea

Northern rock-cress

Berwr-y-cerrig y Gogledd

Native

Local status: Rare

National status: Vulnerable

Welsh Status: Endangered

Site	Gridref	Year	Comment	Protection
North Cliff of Moelwyn Mawr	SH656451	1995	Cofnod	SSSI

A single site in the county at the head of Cwm Croesor; last recorded 1995.

Arenaria leptoclados

Thyme-leaved sandwort

Tywodlys dail teim

Native

Local status: Rare

Site	Gridref	Year	Comment	Protection
Morfa Mawddach Old Railway Track	SH624148	1994	Cofnod	SSSI, SAC
VC48 Merionethshire	SH64	1886		

Also an old record [1960] from SN69 where it is still likely to occur: it was recently recorded at Ynys Las on the other side of the Dyfi estuary in VC46 [Chater 2010].

Artemisia absinthium

Wormwood

Y wermod lwyd

Archaeophyte

Local status: Scarce

Site	Gridref	Year	Comment	Protection
Morfa Harlech	SH53	1984		SSSI, SAC
Tonfanau Quarry	SH5703	2013		SSSI
VC48 Merionethshire	SH70	1973		
Llandrillo, Ty Ucha	SJ044380	2009		
VC48 Merionethshire	SN59	1986		
Dyffryn Glyn-cul	SN611981	2009		

Scattered and probably persistent in waste ground and old farmyards; old records [pre-1969] from SH60, SH61, SH62, SH63 and SH71 [1956] also SH72 and SSH93 [pre 1969].

Artemisia maritima

Sea Wormwood

Wermod y môr

Native

Local status: Extinct

Welsh Status: Critically endangered, Section 42

All three records on the database [the last in 1975] now treated as dubious. Not in VCCC.

Asplenium marinum

Sea spleenwort

Duegredynen arfor

Native

Local status: Scarce

Site	Gridref	Year	Comment	Protection
Llangelynin	SH50	2005		
VC48 Merionethshire	SH53	1999		
Mochras	SH569272	2010		SSSI, SAC
Gallt Ffynnon yr Hydd	SH61	2011		

Perhaps now rare: also 1963 record from Friog [SH61] and a pre-1969 record from SN69.

Asplenium obovatum

Lanceolate spleenwort

Duegredynen hirgul

Native

Local status: Scarce

National status: Near threatened

Site	Gridref	Year	Comment	Protection
Barmouth	SH61	1991		
Ynys Gifftan	SH63	1990		
Aberglaslyn	SH64	1980		
Tan-y-bwlch	SH64	1995		
VC48 Merionethshire	SH71	1987		
Aberdyfi	SN69Y	2009		SSSI, SAC, NNR, Ramsar

Most of these records are very old and there is a need for updating everywhere. Older records exist for Talsarnau [SH63, 1968], Vale of Ffestiniog [SH64, 1962] and Llanelltyd [SH72, 1964].

Asplenium septentrionale

Forked spleenwort

Duegredynen fforchog

Native

Local status: Scarce

National status: Near threatened

Site	Gridref	Year	Comment	Protection
Croesor	SH632440	1979		
Blaenau Ffestiniog	SH64	1979		
Hafod-y-fedw	SH730218	2013		
Carreg y Fran	SH737449	1980		SSSI, SAC
Ffestiniog	SH74	1982		
Cwm Cywarch	SH845187	2012		

Probably now rare. Many very old records: SH64, Cwmorthin [1953] SH71: updating searches are needed but a search on Carreg y Fran in 2012 failed to refind this species.

Atriplex glabriuscula

Babington's Orache

Llygwyn y tywod

Native

Local status: Rare

Site	Gridref	Year	Comment	Protection
VC48 Merionethshire	SH50	1999		
Llwyngwrl N	SH51V	2012		SSSI, SAC
VC48 Merionethshire	SH52	1999		

Rarely recorded in Merioneth although Benoit and Richards [1963] describe it as "common on the shore". Old record for SH61.

Atriplex laciniata

Frosted orache

Llygwyn ariannaid

Native

Local status: Scarce

Site	Gridref	Year	Comment	Protection
VC48 Merionethshire	SH51	1999		
VC48 Merionethshire	SH53	1999		
Mochras	SH5526	2006	Cofnod	SSSI, SAC, NNR
Morfa Harlech	SH565355	1974		SSSI, SAC, NNR
Bennar	SH5722	2002		SSSI, SAC
VC48 Merionethshire	SH61	1999		

Perhaps overlooked. Chater [2010] says that Ynyslas, in VC46, just south of the Afon Dyfi, is a reliable site [SN59].

Atriplex littoralis

Grass-leaved orache

Llygwyn arfor

Native

Local status: Rare

Site	Gridref	Year	Comment	Protection
between Llanaber and Talybont	SH5919	2002		SSSI, SAC

The only modern record. One other very old record [SH61] pre-1900.

Atriplex portulacoides

Sea-purslane

Llygwyn llwydwyn

Native

Local status: Rare

Site	Gridref	Year	Comment	Protection
Mochras	SH562264	2011		SSSI, SAC
Mochras	SH564266	2010		SSSI
Morfa Harlech	SH578353	2012		SSSI, SAC

Curiously rare on the Merioneth as it is on the Cardigan coast [Chater, 2010].

Baldellia ranunculoides

Lesser water-plantain

Llyriad-y-dŵr bach

Native

Local status: Rare

National status: Near threatened

Site	Gridref	Year	Comment	Protection
Harlech Forest	SH53R	2003		SSSI, SAC, NNR
Morfa Harlech, c 1400m WSW of Glan-y-mor	SH566341	1998		SSSI, SAC
VC48 Merionethshire	SN59	1987		

Older records from SH50, SH51, SH52 [Mochras, 1963], SH93 and SN69 [Aberdyfi, 1963].

Barbarea vulgaris

Winter cress

Berwr y gaeaf

Native

Local status: Scarce

Site	Gridref	Year	Comment	Protection
VC48 Merionethshire	SH61	1986		
Morfa Mawddach Old Railway Track	SH7118	1994		SSSI, SAC
Dolgellau, N of	SH71J	1987		SSSI, SAC
VC48 Merionethshire	SH72	1999		
VC48 Merionethshire	SH83	1970		
Llyn Tegid	SH9235	1996		SSSI, SAC, Ramsar
Cilan	SJ0237	2012		SSSI, SAC

Very few recent records. Older records from SH50 and SH60.

Berula erecta

Lesser water-parsnip

Panasen-y-dŵr gulddail

Native

Local status: Rare

Site	Gridref	Year	Comment	Protection
Morfa Harlech	SH53	1972		SSSI, SAC
Afon Glaslyn at Boston Lodge	SH5838	2013		SSSI

Very rare: a single post-Atlas record.

Beta vulgaris* subsp. *maritima

Sea beet

Betysen arfor

Native

Local status: Scarce

Site	Gridref	Year	Comment	Protection
Tonfanau	SH50R	2012		SSSI, SAC
VC48 Merionethshire	SH51	1999		
VC48 Merionethshire	SH53	1999		
Bennar	SH5722	2002		SSSI, SAC
Fairbourne Spit	SH613144	2011		SSSI, SAC
VC48 Merionethshire	SH63	1986		
VC48 Merionethshire	SN59	1999		

Bidens cernua

Nodding bur-marigold

Graban gogwydd

Native

Local status: Rare

Site	Gridref	Year	Comment	Protection
VC48 Merionethshire	SH53	1986		
VC48 Merionethshire	SH61	1986		
VC48 Merionethshire	SN59	1986		

Not recorded since 1987. Perhaps overlooked or reduced by changed grazing regimes. An older record from SH50 and one from SH52.

Bidens tripartita

Trifid bur-marigold

Graban teiran

Native

Local status: Scarce

Site	Gridref	Year	Comment	Protection
VC48 Merionethshire	SH52	1986		
VC48 Merionethshire	SH53	1999		
VC48 Merionethshire	SH73	1986		
River Alwen, Hafod east	SJ0642	2013		SSSI, SAC

Older records also in SH50 [Dysynni breakwater, 1954], SH60, SH61, and SH63.

Blackstonia perfoliata

Yellow-wort

Y ganrhi felen

Native

Local status: Rare

Site	Gridref	Year	Comment	Protection
VC48 Merionethshire	SH53	1999		

The single record was recorded as "planted deliberately" and listed as a neophyte in VCCC.

Blasmus rufus

Saltmarsh flat-sedge

Corsfrwynen y morfa

Native

Local status: Rare

Welsh Status: Vulnerable

Site	Gridref	Year	Comment	Protection
VC48 Merionethshire	SH52	1986		
Morfa Harlech NNR	SH53	1974		SSSI, SAC, NNR

Also a pre-1969 record from SH61.

Botrychium lunaria

Moonwort

Lloer-redynen

Native

Local status: Scarce

Site	Gridref	Year	Comment	Protection
above Llanbedr	SH52	2005		
VC48 Merionethshire	SH52Y	1999		SSSI, SAC
VC48 Merionethshire	SH53	1999		
Field 1412, Brwynllynau, Harlech	SH586297	2004	Cofnod [site centroid]	
Allt-goch	SH5926	1992	Cofnod	
VC48 Merionethshire	SH61	1999		
VC48 Merionethshire	SH71	1999		
Cefndeuddwr	SH7226	1993	Cofnod	
Blaen y Cwm	SH7738	2009		
VC48 Merionethshire	SJ04	1999		

Probably overlooked, as the database is lacking many modern records. Recorded earlier in SH63, SH82 and SH93 [1869].

Brassica nigra

Black mustard

Mwstard du

Archaeophyte

Local status: Rare

Site	Gridref	Year	Comment	Protection
Tywyn	SH50	2007		
VC48 Merionethshire	SH61	1986		
VC48 Merionethshire	SN69	1999		

An earlier record from SH71 needs updating.

Brassica oleracea var. oleracea

Cabbage

Bresychen wyllt

Archaeophyte

Local status: Extinct

Last record Harlech SH53 [1798].

Bromopsis benekenii

Lesser hairy-brome

Y pawrwellt blewog lleiaf

Native

Local status: Rare

Welsh Status: Vulnerable

Site	Gridref	Year	Comment	Protection
Blaen y Ddol	SJ04H	2009		

Perhaps overlooked in the more calcareous and humus-rich woods.

Bromopsis ramosa

Hairy-brome

Pawrwellt blewog

Native

Local status: Scarce

Site	Gridref	Year	Comment	Protection
Bryn-y-Moel, Near Llanbedr	SH587279	1994	Cofnod	
Coed Lletywalter	SH6027	2012		SSSI, SAC
VC48 Merionethshire	SH61	1999		
Ffridd Farm	SH6130	2012		SSSI, SAC
Dolgellau, N of	SH71J	2011		SSSI, SAC
Glyn Arran, Dolgellau	SH730171	1996	Cofnod	SSSI, SAC
Gwerclas Farm	SJ04L	2010		SSSI, SAC
Bryn Saith Marchog	SJ05Q	2007		

Also older records from SH72, SH82 and SJ0343 [1956] near Four Crosses.

Bromus hordeaceus subsp. thominei

Soft-brome

Pawrwellt cyffredin

Native

Local status: Rare

Site	Gridref	Year	Comment	Protection
VC48 Merionethshire	SH61	1999		
VC48 Merionethshire	SN59	1999		

Recorded in the coastal dunes but not recently: earlier records from SH50, SH52 and SH53; also from SN69 [1874].

Bromus secalinus

Rye brome

Pawrwellt bach

Archaeophyte

Local status: Extinct

National status: Vulnerable

Welsh Status: Near threatened

Last recorded SH52 [1902].

Calamagrostis epigejos

Wood small-reed

Corsen fach y coed

Native

Local status: Rare

Site	Gridref	Year	Comment	Protection
VC48 Merionethshire	SH50	1976		
VC48 Merionethshire	SH53	1999		

Not in Benoit & Richards [1963]. No very recent records.

Callitriche platycarpa

Various-leaved water-starwort

Brigwlydd y gwanwyn

Native

Local status: Scarce

Site	Gridref	Year	Comment	Protection
VC48 Merionethshire	SH53	1999		
VC48 Merionethshire	SH63	1971		
VC48 Merionethshire	SH64	1999		
R Dee, 5km lengths above+below	SH949367	1979		SSSI, SAC
R Dee, 5km lengths above+below	SJ069433	1979		SSSI, SAC
R Dee, 5km lengths above+below	SJ114436	1979		SSSI, SAC
VC48 Merionethshire	SN79	1972		

Also SH52 Morfa Dyffryn [1953] and SH60 [1963]. Perhaps under-recorded due to difficulty of identification.

Calystegia sepium subsp. roseata

Hedge bindweed

Taglys y perthi

Native

Local status: Scarce

Site	Gridref	Year	Comment	Protection
VC48 Merionethshire	SH50	1999		
Llwyngwrl N	SH51V	2012		SSSI, SAC
VC48 Merionethshire	SH52	1986		
VC48 Merionethshire	SH53	1999		
VC48 Merionethshire	SH61	1999		
VC48 Merionethshire	SH63	1999		

Lacking detail and recent records. Older records from SH63 [1959] and SN59 [1965].

Calystegia x lucana = C sepium x silvatica

Hybrid bindweed

Taglys croesryw

Native

Local status: Rare

Site	Gridref	Year	Comment	Protection
VC48 Merionethshire	SH615157	1992		

2 records, an early one from 1948 [SN69].

Campanula latifolia

Giant bellflower

Clychlys mawr

Native

Local status: Rare

Site	Gridref	Year	Comment	Protection
VC48 Merionethshire	SH61	1999		
Corwen, E of Rhaggatt Hall	SJ0943	2004		SSSI, SAC

Campanula patula

Spreading bellflower

Clychlys ymledol

Native

Local status: Extinct

National status: Endangered

Welsh Status: Critically endangered, Section 42

One early record [1877] near Dolgellau [SH71] [Herb. NMW].

Cardamine amara

Large bitter-cress

Berwr chwerw mawr

Native

Local status: Rare

Site	Gridref	Year	Comment	Protection
VC48 Merionethshire	SJ04	1977		

Perhaps casual.

Cardamine impatiens

Narrow-leaved bitter-cress

Berwr chwerw culddail

Native

Local status: Rare

National status: Near threatened

Site	Gridref	Year	Comment	Protection
Rhydmain, nr	SH82	1975		

Never refound.

Carduus crispus

Wetted thistle

Ysgallen grech

Native

Local status: Rare

Site	Gridref	Year	Comment	Protection
Morfa Dyffryn	SH5626	2006		SSSI, SAC, NNR
Hafod-y-calch	SJ04L	2012	[reported but unconfirmed]	SSSI, SAC

Old records from Ffestiniog, SH74, [1950] and SH93.

Carduus nutans

Musk thistle

Ysgallen bendrom

Native

Local status: Scarce

Site	Gridref	Year	Comment	Protection
Morfa Dyffryn	SH52	2008		SSSI, SAC
VC48 Merionethshire	SH61	1999		
Eithin Fynydd, Llanuwchllyn	SH82	2007		
VC48 Merionethshire	SJ03	1999		
Corwen	SJ078444	2011		
Glyndyfrdwy, Nant y Pandy	SJ14K	2007		SSSI, SAC

Infrequent, in less acid pastures.

Carduus tenuiflorus

Slender thistle

Ysgallen flodfain

Native

Local status: Rare

Site	Gridref	Year	Comment	Protection
Morfa Dyffryn	SH5525	2006	Cofnod	SSSI, SAC, NNR
Fairbourne Spit	SH6114	2012		SSSI

Also from SH53 pre-1970 and SN69 pre-1963.

Carex acuta

Slender tufted-sedge

Hesgen tywysennau
main/meinion**Native**

Local status: Scarce

Site	Gridref	Year	Comment	Protection
Afon Amnodd-bwll	SH813367	1995		SSSI, SAC
Llyn Tegid	SH889313	2009		SSSI, SAC, Ramsar
Llyn Tegid	SH9234	1971		SSSI, SAC, Ramsar
Llyn Tegid	SH9235	2012		SSSI, SAC, Ramsar
Crogen	SJ03D	1999		SSSI, SAC
Dee meadows, Hendwr	SJ03J	2004		SSSI, SAC
Cynwyd	SJ04K	2010		SSSI, SAC

Scattered at both ends of Llyn Tegid and along the River Dee north of Bala. An old record [pre-1963] from SJ14.

Carex acuta x aquatilis

Hybrid sedge

Hesgen groesryw

Native hybrid

Local status: Rare

Welsh Status: Vulnerable

Site	Gridref	Year	Comment	Protection
VC48 Merionethshire	SH83	1996		
VC48 Merionethshire	SH93	1996		
VC48 Merionethshire	SJ03	1996		

PMB records, all confirmed by A C Jermy. None has yet been updated.

Carex aquatilis

Water sedge

Hesgen y dŵr

Native

Local status: Scarce

Site	Gridref	Year	Comment	Protection
Afon Eden	SH73	1986		SSSI, SAC
Afon Amnodd-bwll	SH811368	2011		SSSI, SAC
Llyn Tegid	SH8831	1988		SSSI, SAC, Ramsar
Llyn Tegid	SH92453443	1979		SSSI, SAC, Ramsar
Llyn Tegid	SH928353	2011		SSSI, SAC, Ramsar
Crogen	SJ03D	1999		SSSI, SAC

Carex bigelowii

Stiff sedge

Hesgen anystwyth

Native

Local status: Scarce

Site	Gridref	Year	Comment	Protection
Llyn Cau	SH7112	2009		SSSI, SAC, NNR
Llyn Lliwbran	SH82S	2008		
Aran Fawddwy	SH864244	2004		
Moel Sych West	SJ03K	2006		SSSI, SAC, NNR
Cadair Bronwen	SJ07673471	2011		SSSI, SAC, NNR

Above c.700m on Berwyn and Aran Mountains and on Cadair Idris. Becoming more frequent as sheep stocks are reduced.

Carex distans

Distant sedge

Hesgen blodau pell

Native

Local status: Scarce

Site	Gridref	Year	Comment	Protection
VC48 Merionethshire	SH50	1999		
Ynys	SH53X	2011		SSSI, SAC, NNR
Morfa Dyffryn, N end of	SH557262	1998		SSSI, SAC
VC48 Merionethshire	SH61	1999		
VC48 Merionethshire	SH63	1986		
Farchynys, Bontddu	SH665181	2012		SSSI, SAC
Cwm Aran	SH7314	2012		SSSI, SAC

Carex disticha

Brown sedge

Hesgen lygliw

Native

Local status: Rare

Site	Gridref	Year	Comment	Protection
VC48 Merionethshire	SH51	1991		

The only record ever for the Vice-county [Herb. NMW].

Carex divulsa* subsp. *divulsa

Grey sedge

Hesgen lwyd

Native

Local status: Extinct

A single record, Caerynwch [SH7617] in 1950; "now disappeared" [Benoit & Richards 1963].

Carex laevigata* x *demissa

Hybrid sedge

Hesgen groesryw

Native hybrid

Local status: Extinct

Site	Gridref	Year	Comment	Protection
Egryn Abbey	SH52	1970		

"confirmed externally" [DDb] but Stace [2010] says "probably an error".

Carex lasiocarpa

Slender sedge

Hesgen fain

Native

Local status: Scarce

Site	Gridref	Year	Comment	Protection
Lasynys	SH5932	1986		SSSI, SAC
Cregennan, Arthog	SH665140	1993	Cofnod	
Llyn Wylfa	SH672163	1995		
Cors Coch	SH6934++	2011		SSSI, SAC
VC48 Merionethshire	SH73	1999		

Probably under-recorded in suitable sites.

Carex lepidocarpa

Long-stalked yellow-sedge

Hesgen felen hirgoes

Native

Local status: Extinct

Site	Gridref	Year	Comment	Protection
VC48 Merionethshire	SH51	1979		

Probably extinct. This single, confirmed record and older records from the same hectad.

Carex limosa

Bog-sedge

Hesgen eurwerdd

Native

Local status: Rare

Site	Gridref	Year	Comment	Protection
Cors Coch	SH6933	2011		SSSI, SAC
Trawsfynydd	SH73	1978		
VC48 Merionethshire	SH73	1999		
VC48 Merionethshire	SH91	1999		

There is other possible habitat in the county but *C. limosa* is not mentioned in Benoit & Richards [1963]. In Cors Coch it occurs in a number of places in two monads.***Carex magellanica***

Tall bog-sedge

Hesgen eurwerdd lefn

Native

Local status: Scarce

Site	Gridref	Year	Comment	Protection
Trawsfynydd, Penstryt	SH726318+	1978		
Llan Ffestiniog	SH742427	1992		SSSI, SAC
SE of Llan Ffestiniog	SH74A	2004		SSSI, SAC, NNR
Waun y Griafolen	SH813293	2000		SSSI, SAC
Llanuwchllyn, nr	SH82	1971		
Afon Dyfrdwy, E of Dduallt	SH824271	1977		SSSI, SAC
Arenig	SH8339	2000		SSSI, SAC
Ffridd y Fawnog	SH859390	2012		SSSI, SAC

Possibly more frequent than these records suggest.

Carex oederi

Small-fruited yellow-sedge

Hesgen felen

Native

Local status: Rare

Site	Gridref	Year	Comment	Protection
Morfa Dyffryn	SH5525	2008	Cofnod	SSSI, SAC, NNR
Morfa Harlech	SH571315	2013		SSSI, SAC
VC48 Merionethshire	SN59	1999		

Older records from SH50 and SH61.

Carex pseudocyperus

Cyperus sedge

Hesgen gynffonnog

Native

Local status: Rare

Welsh Status: Near threatened

Site	Gridref	Year	Comment	Protection
VC48 Merionethshire	SH51	1986		
Morfa Mawddach Old Railway Track	SH624148	1994	Cofnod	SSSI, SAC
Arthog Bog	SH6314	1971		SSSI, SAC

Carex punctata

Dotted sedge

Hesgen fannog

Native

Local status: Scarce

Site	Gridref	Year	Comment	Protection
RAF Llanbedr	SH52T	2010		SSSI, SAC, NNR
Morfa Harlech	SH570326	1984		SSSI, SAC
Portmeirion, cliffs	SH5836	1980		SSSI, SAC, NNR
Llanfihangel-y-Traethau	SH594358	1980		SSSI, SAC
Ynys Giffan, S side of	SH601369	1984		SSSI, SAC
Minfford	SH601379	1980		SSSI, SAC
Aberamffra Harbour, E cliffs	SH623157	1980		SSSI, SAC
Barmouth Junction	SH629146	1980		
Arthog	SH6414	1978		SSSI, SAC
Farchynys Hillock	SH663180	1971		SSSI, SAC
Penhelyg-Trefri	SN627962	1978		SSSI, SAC, NNR, Ramsar
Abertafol	SN649969	1978		
Gogarth Halt, N side of railway	SN678978	1980		SSSI, SAC

Recorded in only 6 hectads but scattered there, so these records may represent fewer Wells sites. Thoroughly surveyed by R.W.David in 1970s and 80s, these records are now >30 years old and almost all need updating. There is a pre-1970 record from SN59.

Carex riparia

Greater pond-sedge

Hesgen-y-dŵr fawr

Native

Local status: Scarce

Site	Gridref	Year	Comment	Protection
Ynys	SH597349	2004		
Talsarnau	SH6034	1971		SSSI, SAC
Glanymorfa-mawr	SH60600474	2005		
Bala Lake, N end	SH9235	1996		SSSI, SAC, Ramsar
Tywyn (south of)	SN5998	2012		SSSI, SAC

Sites scattered, mainly along coast. An old record from SH64.

Carex spicata

Spiked sedge

Hesgen ysbigog borffor

Native

Local status: Rare

Site	Gridref	Year	Comment	Protection
VC48 Merionethshire	SJ04	2000		

Very rare: probably introduced in SH63 [1961]. There is a more-located record from Hafod y Calch SJ0441 [1955].

Carex vesicaria

Bladder-sedge

Hesgen chwysigennaidd

Native

Local status: Scarce

Site	Gridref	Year	Comment	Protection
Mochras Peninsula, W side of	SH553265	1998		SSSI
VC48 Merionethshire	SH60	1986		
Tal y Llyn lake	SH717100	1972	Cofnod	SSSI
Afon Amnodd-bwll	SH812367	1997		
Llyn Tegid	SH88773164	2007		SSSI, SAC, Ramsar
Llyn Tegid	SH889313	2009		SSSI, SAC, Ramsar
Llyn Tegid	SH9235	2007		SSSI, SAC, Ramsar
Crogen	SJ03D	1999		SSSI, SAC
VC48 Merionethshire	SJ04	1987		

Carex x boeninghausiana = C paniculata x remota

Hybrid sedge

Hesgen groesryw

Native hybrid

Local status: Rare

Site	Gridref	Year	Comment	Protection
VC48 Merionethshire	SH70	1999		

A single unlocated record before 1999. Both parents not uncommon in the Vice-county.

Carex x decolorans = C bigelowii x nigra

Hybrid sedge

Hesgen groesryw

Native hybrid

Local status: Rare

Site	Gridref	Year	Comment	Protection
Cadair Bronwen	SJ07193501	2011		SSSI, SAC, NNR

First record, 2011: likely to become more common [see *C. bigelowii* above].***Carex x elytroides = C acuta x nigra***

Hybrid sedge

Hesgen groesryw

Native

Local status: Rare

Site	Gridref	Year	Comment	Protection
Llyn Tegid	SH8831	2012		SSSI, SAC, Ramsar
Llyn Tegid	SH928353	2012		SSSI, SAC, Ramsar

In patches at both ends of Llyn Tegid.

Carex x involuta = C rostrata x C vesicaria

Hybrid sedge

Hesgen groesryw

Native hybrid

Local status: Rare

Site	Gridref	Year	Comment	Protection
Llyn Tegid	SH887316+	2007		SAC, Ramsar
Llyn Tegid	SH927354	1980		SSSI, SAC, Ramsar
Crogen	SJ03D	2014		SSSI, SAC

Carum verticillatum

Whorled caraway

Carwy droellennog

Native

Local status: Scarce

Site	Gridref	Year	Comment	Protection
VC48 Merionethshire	SH50	1971		
VC48 Merionethshire	SH53	1999		
Pont Croesor SSSI & Annexe	SH592415+	1993	Cofnod	SSSI, SAC
Pont Croesor, wet meadow	SH594414	2008		SSSI

Only two recent Wells sites, but locally abundant.

Catapodium marinum

Sea Fern-grass

Gwenithwellt y morfa

Native

Local status: Scarce

Site	Gridref	Year	Comment	Protection
VC48 Merionethshire	SH51	1986		
Aber Dysynni	SH582027	1989	Cofnod	SSSI
Morfa Mawddach Old Railway Track	SH624148	2011		SSSI, SAC
Tywyn (south of)	SN588981	2009		SSSI, SAC

Catapodium rigidum x marinum

Hybrid fern-grass

Gwenithwellt croesryw

Native hybrid

Local status: Rare

Very rare. A single record from 1960 det C E Hubbard. Herb. K.

Centaurea cyanus

Cornflower

Glas yr ŷd

Archeophyte

Local status: Extinct

Welsh Status: Critically endangered, Section 42

One early record as casual in SH93 [1950].

Centaurea scabiosa

Greater knapweed

Y bengaled fawr

Native

Local status: Rare

Site	Gridref	Year	Comment	Protection
Aberdyfi	SN69	2008		

Very rare. Recent record "surely an accidental introduction with ballast" [PMB in BSBI Welsh Bulletin 84, 2009, 12-44].

Centaureum littorale

Seaside centaury

Y ganrhi goch arfor

Native

Local status: Rare

Site	Gridref	Year	Comment	Protection
Morfa Dyffryn	SH5525	2006	Cofnod	SSSI, SAC, NNR

This modern record is not confirmed but is from the same site as an old record in SH61 [1923].

Centaureum pulchellum

Lesser centaury

Y ganrhi goch fach

Native

Local status: Scarce

Site	Gridref	Year	Comment	Protection
VC48 Merionethshire	SH52	1999		
VC48 Merionethshire	SH53	1999		
Morfa Dyffryn Car Park and Dunes	SH573224	1981	Cofnod	SSSI, SAC
VC48 Merionethshire	SH63	1972		

Old records from Broadwater [SH50] and SN59.

Centunculus minimus

Chaffweed

Gwlyddyn-Mair bach

Native

Local status: Scarce

National status: Near threatened

Welsh Status: Vulnerable

Site	Gridref	Year	Comment	Protection
VC48 Merionethshire	SH50	1999		
VC48 Merionethshire	SH52	1986		
VC48 Merionethshire	SH53	1999		
Mawddach estuary near Arthog	SH61	2006		
VC48 Merionethshire	SH63	1999		

Old records in SN59 and SH69. Possibly overlooked elsewhere.

Cephalanthera longifolia

Narrow-leaved helleborine

Y galdrist gulddail

Native

Local status: Scarce

National status: Vulnerable

Welsh Status: Endangered, Section 42

Site	Gridref	Year	Comment	Protection
Harlech	SH5831	1981		SSSI, SAC
Eisingrug	SH612344	1978		
Arthog	SH645146	1998		
Arthog track	SH645157	2007		SSSI, SAC
Dinas Mawddwy	SH8515	1991		
Aberdyfi	SN6095	1996		SSSI, SAC, NNR, Ramsar
Coed y Gofer, nr Aberdyfi	SN639964	2006	Cofnod	
Area A. Coed y Gofer	SN641966+	2005		SSSI
Aberdyfi	SN647969+	2005		

Continues to do well at sites around Coed y Gofer and survives at Arthog: probably extinct at Dinas Mawddwy and Eisingrug sites though this needs confirming.

Chaenorhinum minus

Small toadflax

Trwyn-y-llo bach

Archaeophyte

Local status: Scarce

Site	Gridref	Year	Comment	Protection
VC48 Merionethshire	SH50	1999		
VC48 Merionethshire	SH52	1999		
VC48 Merionethshire	SH53	1999		
VC48 Merionethshire	SH61	1999		
VC48 Merionethshire	SH63	1999		
VC48 Merionethshire	SH71	1988		
Arenig Quarry	SH829393	1999		SSSI, SAC
Corwen East	SJ04W	2003		SSSI, SAC
VC48 Merionethshire	SJ14	1976		

Recorded in 12 hectads but declining since the railway closures. Probably gone from many sites. Old records from SH72, SH73 and SH74.

Chara virgata

A stonewort

Local status: Scarce

Site	Gridref	Year	Comment	Protection
VC48 Merionethshire	SH52	1987		
VC48 Merionethshire; VC49 Caernarvonshire	SH53	1987		
Tonfanau Quarry	SH5703	2013		SSSI
Llynnau Cregennen	SH66401450	2012		
Llyn Gwernan	SH704160	2009		
Llyn Gafr	SH712141	1982		SSSI, SAC
Cadair Idris	SH718143	1975		SSSI, SAC

Very few recent records; old records from Barmouth [SH61] and Cadair Idris [SH71].

Chenopodium bonus-henricus

Good King Henry

Llysiâu'r gwrda

Archaeophyte

Local status: Scarce

National status: Vulnerable

Site	Gridref	Year	Comment	Protection
Traeth Glaslyn	SH53Z	2013		SSSI, SAC
Pont Croesor	SH5941	2012		SSSI, SAC
VC48 Merionethshire	SH71	1986		
Bala Lake, N end	SH9235	1984		SSSI, SAC, Ramsar
VC48 Merionethshire	SH93	1999		
VC48 Merionethshire	SJ03	1971		
Llety	SJ04Y	2011		

Some very old records in SH51, SH61, SH70, SH74, SH81 Probably gone from many of these sites, "lost through a general tidying of ruderal habitats" [Preston et al, 2000].

Chrysanthemum segetum* see *Glebionis segetum***Circaea alpina***

Alpine enchanter's-nightshade

Llysiâu-Steffan y mynydd

Native

Local status: Probably extinct

Welsh Status: Endangered

Site	Gridref	Year	Comment	Protection
Corris, NW	SH747078	1980		
Ogof Ddu, Scree	SH897214	1993		SSSI

Perhaps extinct: updates needed.

Cirsium dissectum

Meadow thistle

Ysgallen y ddôl

Native

Local status: Rare

Site	Gridref	Year	Comment	Protection
Bennar	SH575222	2010		SSSI, SAC
Felinrhyd Fach	SH662394	1992	Cofnod	SSSI, SAC, NNR
VC48 Merionethshire	SN59	1999		

Cirsium heterophyllum

Melancholy thistle

Ysgallen fwyth

Native

Local status: Extinct

Welsh Status: Endangered

VC48 Merionethshire	SH73	1986		
VC48 Merionethshire	SH74	1999		

Probably extinct. Very old records from SH83 [1953] and SH93 [1869].

Clinopodium vulgare

Wild basil

Brenhinllys gwyllt

Native

Local status: Scarce

Site	Gridref	Year	Comment	Protection
VC48 Merionethshire	SH60	1986		
VC48 Merionethshire	SH63	1999		
Morfa Mawddach Old Railway Track	SH6415	1994	Cofnod	SSSI, SAC
Morfa Mawddach Old Railway Track	SH6516	1994	Cofnod	SSSI, SAC
Grassland Glade, Coedydd Maentwrog	SH652414	1994	Cofnod	SSSI, SAC, NNR
Cors yr Hendre	SJ0437	2011		SSSI, SAC, NNR
Cae Mawr	SJ04L	2011		SSSI, SAC

Further records in Benoit and Richards [1963], from SH52, SH61, SJ04 and SJ14; also SH60 and Hafod-y-Calch [SJ04], 1956.

Cochlearia pyrenaica

Pyrenean scurvygrass

Llwylys y Pyreneau

Native

Local status: Rare

Welsh Status: Data deficient

Site	Gridref	Year	Comment	Protection
VC48 Merionethshire	SH62	1999		

Data deficient; no recent records. Historical records from SH71 [1875 and 1924], SH81 [1938].

Coeloglossum viride

Frog orchid

Tegeirian y broga

Native

Local status: Rare

National status: Vulnerable

Welsh Status: Endangered, Section 42

Site	Gridref	Year	Comment	Protection
Brwynllynau, Harlech	SH582298	2002	Cofnod	SSSI
VC48 Merionethshire	SH71	1988		
Tir Stent	SH753162	1986	Cofnod	SSSI, SAC
Tir Stent	SH755164	1986	Cofnod	SSSI, SAC
Pen-y-Bryn Dyfi, Bethel, Bala	SH999401	1993	Cofnod	

Most records very old - pre-1970 ones from SH61, SH72, SH82 and SH93.

Crambe maritima

Sea-kale

Ysgedd arfor

Native

Local status: Rare

Site	Gridref	Year	Comment	Protection
Llandanwg	SH52	1989		
Llwyngwriol South	SH578088	2011		SSSI, SAC

Rare: a single modern record: old sighting near Harlech [SH53], 1963.

Crithmum maritimum

Rock samphire

Corn-carw'r môr

Native

Local status: Scarce

Site	Gridref	Year	Comment	Protection
VC48 Merionethshire	SH51	1986		
VC48 Merionethshire	SH52	1999		
VC48 Merionethshire	SH572008	1974		SSSI, SAC
VC48 Merionethshire	SH61	1999		
Fairbourne	SH613144	2011		SSSI, SAC

Perhaps not scarce but a need for updates. Older records scattered in SH50, SH52, SH53 and SH63.

Cuscuta epithymum

Dodder

Llindag

Native

Local status: Extinct

National status: Vulnerable

Welsh Status: Vulnerable

Only pre-1960 records - in SH61 and SH71. Perhaps extinct.

Cynoglossum officinale

Hound's-tongue

Tafod y bytheiad

Native

Local status: Scarce

National status: Near threatened

Site	Gridref	Year	Comment	Protection
Mochras	SH52T	2010		SSSI, SAC, NNR
Morfa Harlech NNR	SH53	1974		SSSI, SAC, NNR
Harlech West	SH53Q	2007		SSSI, SAC, NNR
Morfa Dyffryn	SH5524+	2007	Cofnod	SSSI, SAC, NNR
Sanddunes, Morfa Dyffryn	SH573224	2005	Cofnod	SSSI, SAC
Morfa Dyffryn Car Park and Dunes	SH582213	1995	Cofnod	
VC48 Merionethshire	SH61	1999		
Aberdyfi Cemetery	SN59Y	2009		SSSI, SAC

Perhaps not scarce in the dune systems. Older records from SH61 [Fairbourne] and SN69.

Cyperus longus

Galingale

Ysnoden Fair

Native

Local status: Rare

National status: Near threatened

Site	Gridref	Year	Comment	Protection
Morfa Dyffryn	SH578217	2002		SSSI, SAC
VC48 Merionethshire	SH61	2004		
Ty'n-twill Bontddu	SH6718	2003		SSSI, SAC

Cystopteris fragilis

Brittle bladder-fern

Ffiolredynen frau

Native

Local status: Scarce

Site	Gridref	Year	Comment	Protection
VC48 Merionethshire	SH590378	1994		
VC48 Merionethshire	SH61	1986		
VC48 Merionethshire	SH63	1970		
North Cliff of Moelwyn Mawr	SH656451	1995	Cofnod	SSSI
Cadair Idris	SH71	1984		SSSI, SAC
VC48 Merionethshire	SH71	1987		
VC48 Merionethshire	SH74	1971		
Llyn Lliwbran	SH82S	2008		
Daear Fawr, Arenig	SH8338	1999		SSSI, SAC
Ogof Ddu, N facing cliffs	SH894213	1993		
Deeside Slab Quarry, Moel Fferna	SJ13J	2008		SSSI, SAC

A need for modern records; local on more basic rocks. Records from SH72, SH73 and SH93 and in Benoit & Richards [1963] in SH71, Llyn Gafr, Cwm Aran, Cwm Cau and Geugraig, and in SH82, Cwm Cywarch.

Dactylorhiza fuchsii x purpurella

Hybrid orchid

Tegeirian croesryw

Native hybrid

Local status: Dubious

?Taxonomy - only 2 records on DDb pre-1969.

Dactylorhiza incarnata* subsp. *coccinea

Marsh-orchid

Tegeirian y Gors

Native

Local status: Rare

National status: Waiting list

Site	Gridref	Year	Comment	Protection
VC48 Merionethshire	SH52	1999		
VC48 Merionethshire	SH53	1999		

Rare, in only 2 hectads but said in 1963 to be locally abundant [Benoit & Richards, 1963].

Dactylorhiza incarnata* subsp. *incarnata

Marsh-orchid

Tegeirian y Gors

Native

Local status: Rare

National status: Waiting list

Site	Gridref	Year	Comment	Protection
VC48 Merionethshire	SH71	1999		
VC48 Merionethshire	SH72	1999		

Rather rare - no modern records; older ones from SH61 and SH82.

Dactylorhiza incarnata subsp. pulchella

Marsh-orchid

Tegeirian y Gors

Native

Local status: Rare

National status: Waiting list

Sanddunes, Morfa Dyffryn	SH573224	2005	Cofnod [site centroid]	SSSI, SAC
Tir Stent	SH71N	2000		SSSI, SAC
VC48 Merionethshire	SH73	1986		

Modern records needed; recorded pre-1970 in SH53, SH 93 and SN69.

Dactylorhiza majalis

Western marsh-orchid

Tegeirian-y-gors llydanddail

Native

Local status: Rare

Old records from Glaslyn SSSI, Pant y Panel SSSI but not refound there in 2012 or 2013.

Dactylorhiza praetermissa

Southern marsh-orchid

Tegeirian-y-gors deheuol

Native

Local status: Rare

Site	Gridref	Year	Comment	Protection
Harlech Forest	SH571327	2003		SSSI, SAC
Cors y Sarnau	SH972390	1989	Cofnod [site centroid]	SSSI

3 hectads; rare. Recorded in 1950 from SH74.

Dactylorhiza purpurella var. cambrensis

Early marsh-orchid

Tegeirian-y-gors cynnar

Native

Local status: Rare

National status: Data deficient

Welsh Status: Vulnerable, Section 42

Site	Gridref	Year	Comment	Protection
NWWT: Traeth Glaslyn	SH587384	1993	Cofnod [site centroid]	SSSI
Glaslyn Marshes (Compartment 7)	SH592386		Recorded as <i>D. occidentalis</i> perhaps this taxon; Cofnod	
Pont Croesor SSSI and Annexe	SH592420	1992	Cofnod	SSSI

Rare; probably three records but there has been some taxonomic confusion and changes of name.

Dactylorhiza traunsteineri

Narrow-leaved marsh-orchid

Tegeirian-y-gors culddail

Native

Local status: Dubious

In Morfa Harlech SSSI citation [2001]. No extant records and not in VCCC.

Dactylorhiza x insignis = D praetermissa x purpurella

Hybrid orchid

Tegeirian croesryw

Native hybrid

Local status: Dubious

A single record from SH53 [PMB 1960].

Dianthus deltoides

Maiden pink

Penigan y forwyn

Native

Local status: Rare

National status: Near threatened

Welsh Status: Near threatened

Site	Gridref	Year	Comment	Protection
Morfa Harlech	SH5634	2012		SSSI, SAC, NNR
Morfa Harlech	SH5730	1979		SSSI, SAC
Morfa Harlech	SH5731	1979		SSSI, SAC
Morfa Harlech	SH5734	1990		SSSI, SAC, NNR
Barmouth	SH6115	1979		
Bala, Ffridd Ucha	SH9233	2013		

Also an old record from SH5831 Morfa Harlech SSSI. The Bala record is almost certain to be a garden throwout.

Dipsacus fullonum

Wild teasel

Cribau'r-pannwr gwyllt

Uncertain

Local status: Rare

Site	Gridref	Year	Comment	Protection
VC48 Merionethshire	SH50	1999		
VC48 Merionethshire	SH53	1999		
Rhyd Sarn	SH83U	2013		SSSI, SAC
Tyddyn Dyfi	SJ04A	2004		
Waste ground, Aberdyfi	SN603962	2005	Cofnod [site centroid]	
VC48 Merionethshire	SN69	1999		

Rare and coastal. Probably no modern native records.

Draba muralis

Wall whitlowgrass

Llyisiau'r-bystwn y muriau

Native

Local status: Rare

Site	Gridref	Year	Comment	Protection
VC48 Merionethshire	SH71	1999		
Llandderfel Bridges	SH93Y	2012		SSSI, SAC

The single extant site was thought to have been destroyed but in 2012 there were three small plants on the wall and a larger fertile plant in the grass beneath. Older records from SH6640 and not refound in SH71. Treated as a neophyte in VCCC.

Drosera anglica

Great sundew

Gwlithlys mawr

Native

Local status: Rare

National status: Near threatened

Welsh Status: Vulnerable

Site	Gridref	Year	Comment	Protection
VC48 Merionethshire	SH61	1987		
Arthog Bog	SH634146	1978		SSSI, SAC
Llyn Barfog	SN654989	2011		SSSI

Very rare; Currently only known at Cors Barfog SSSI and not seen recently at Arthog Bog.

Drosera intermedia

Oblong-leaved sundew

Gwlithlys hirddail

Native

Local status: Scarce

Welsh Status: Vulnerable

Site	Gridref	Year	Comment	Protection
Cwm Caeth	SH604469	2011		
Upper Cwm Bychan	SH607474	2011		
Gwerncaerneyddion	SH608257	2002	Cofnod	
Cwm Nantcol	SH62482651	1975		
Cwm Bychan	SH64563150	2009		SSSI, SAC
Cregennan, Arthog	SH6614	2012		SSSI
Nant Ystradau	SH674427	2013		
On West side of track leading to a Weir & Sheepfolds Nr Trawsfynydd Lake	SH690331	2010	Cofnod	
Afon Eden - Cors Goch	SH69883318	2001	Cofnod	SSSI, SAC
Llwyn-iarth	SH708169	2013	Cofnod	SSSI
Llyn Barfog	SN65499893	2011		SSSI

An old record for Gogarth Bog SN69 [1963].and also in SH70.

Drosera x obovata = D anglica x rotundifolia

Hybrid sundew

Gwlithlys croesryw

Native hybrid

Local status: Extinct

Probably extinct. Last record 1965, at its only known site at Llyn Barfog SSSI.

Dryopteris aemula

Hay-scented buckler-fern

Marchredynen bêr

Native

Local status: Scarce

Site	Gridref	Year	Comment	Protection
VC48 Merionethshire	SH52	1999		
Nantcol Gorge, Aberartro	SH601271	1996	Cofnod	SSSI, SAC
VC48 Merionethshire	SH63	1999		
VC48 Merionethshire	SH64	1999		
Felinrhyd Fach	SH658391	1974		SSSI, SAC
Tal y Llyn	SH71	2007		
VC48 Merionethshire	SH72	1999		
Ffestiniog (south)	SH72694226	2000	Cofnod	
Glyn Arran, Dolgellau	SH730171	1996	Cofnod	SSSI, SAC
SE of Llan Ffestiniog	SH74A	2004		SSSI, SAC, NNR

More localised records needed. Old records in SH52, SH60 and SH9634.

Dryopteris expansa

Northern Buckler-fern

Marchredynen y Gogledd

Native

Local status: Dubious

Welsh Status: Critically endangered

Site	Gridref	Year	Comment	Protection
Cadair Idris	SH7112	2008	Cofnod	SSSI, SAC, NNR

Recorded from Cader Idris in 2008 but not reconfirmed. Listed in VCCC but not on DDb.

Dryopteris x deweveri* = *D carthusiana x dilatata

Hybrid buckler-fern

Marchredynen groesryw

Native hybrid

Local status: Scarce

Site	Gridref	Year	Comment	Protection
Tonfanau	SH50R	2009		SSSI, SAC
VC48 Merionethshire	SH53	1999		
VC48 Merionethshire	SH64	1970		
Ceunant Llennyrch	SH6539	1999		SSSI, SAC, NNR
Penmaen	SH93J	2010		
Cors y Sarnau	SH93U	2004		SSSI, SAC

Scarce, but probably overlooked.

Echium vulgare

Viper's-bugloss

Gwiberlys

Native

Local status: Scarce

Site	Gridref	Year	Comment	Protection
Morfa Gwyllt	SH570020	1974		SSSI, SAC
VC48 Merionethshire	SH61	1999		
Morfa Mawddach Old Railway Track	SH6214	1994	Cofnod	SSSI, SAC
Wasteground, Aberdyfi	SN6096	2005	Cofnod [site centroid]	SSSI, SAC

Scarce, but locally frequent in the past; old records in SH52, SH70 and SN59 need updating.

Elatine hexandra

Six-stamened waterwort

Gwybybyr chwebrigerog

Native

Local status: Scarce

Site	Gridref	Year	Comment	Protection
Llyn Trawsfynydd	SH698382	2012		
Tal y Llyn Lake	SH7110	1987		SSSI, SAC
Tal y Llyn Lake	SH719099	1983		SSSI
Llyn Trawsfynydd	SH73	1975		
Llyn Tegid	SH88863168	2007		SSSI, SAC, Ramsar
Llyn Tegid	SH890313	1979		SSSI, SAC, Ramsar
Llyn Tegid	SH9033	1986		SSSI, SAC, Ramsar
Llyn Tegid	SH9134	1993		SSSI, SAC, Ramsar
Llyn Tegid	SH9235	2007		SSSI, SAC, Ramsar
Llyn Caereuni	SH983407	2010		

Perhaps not scarce, but records need localising and updating. Old record from SH50.

Elatine hydropiper

Eight-stamened waterwort

Gwybybyr wythfrigerog

Native

Local status: Dubious

Site	Gridref	Year	Comment	Protection
Llyn Tegid	SH915335	1984		SSSI, SAC, Ramsar

A single record. Copy of record held at CCW, Dolgellau. Perhaps an error for *E. hexandra*. From "An evaluation of a proposal to designate Llyn Tegid as a wetland of international importance under the Ramsar convention" [DDb].

Eleocharis parvula

Dwarf spike-rush

Ysbigfrwynen fach

Native

Local status: Scarce

Welsh Status: Vulnerable

Site	Gridref	Year	Comment	Protection
Morfa Harlech	SH5734	1995		SSSI, SAC, NNR
Afon Glaslyn at Boston Lodge	SH5837	1994		SSSI, SAC, NNR
Afon Glaslyn at Boston Lodge	SH5838	1994		SSSI, SAC
Afon Glaslyn at Y Garth	SH5839	1970		SSSI, SAC
Glaslyn Marshes (Compartment 9)	SH592386	1983	Cofnod [site centroid]	
Afon Glaslyn at Y Garth	SH5939	1994		SSSI, SAC
Afon Dwyrhyd, Llandecwyn Station	SH6137	1978		SSSI, SAC
Pont Brewet	SH616385	2011		SSSI, SAC
Afon Dwyrhyd at Pont Tyddyn-isaf	SH6339	1994		SSSI, SAC
Afon Dwyrhyd above Gelli-grin	SH6439	1991		SSSI, SAC
Afon Dwyrhyd	SH6440	1996		SSSI, SAC
Penmaenpool	SH697187	2012		SSSI, SAC

Extensive survey results from 1974-1991 seem to represent 6 Wells sites. Need for re-survey. An old record from SN69.

Elytrigia atherica

Sea couch

Marchwellt arfor

Native

Local status: Rare

VC48 Merionethshire	SH53	1999		
Aber Dysynni	SH582027	1989	Cofnod	SSSI
VC48 Merionethshire	SH63	1999		

Recorded pre-1970 in SH52.

Elytrigia x laxa = E juncea x repens

Hybrid couch

Marchwellt croesryw

Native

Local status: Rare

Site	Gridref	Year	Comment	Protection
VC48 Merionethshire	SH51	1999		

Rare; no records this millenium. Old records from SH53 and SH61.

Empetrum nigrum subsp. hermaphroditum

Mountain crowberry

Creiglusen dduerywiol

Native

Local status: Rare

Welsh Status: Vulnerable

Perhaps under-recorded in the high mountains. Only two pre-1970 records, from SH71.

Epilobium lanceolatum

Spear-leaved willowherb

Helyglys gwaywddail

Native

Local status: Rare

Site	Gridref	Year	Comment	Protection
Morfa Harlech	SH53	1974		SSSI, SAC

A rare casual record.

Epilobium tetragonum

Square-stalked willowherb

Helyglys pedronglog

Native

Local status: Rare

Site	Gridref	Year	Comment	Protection
Morfa Dyffryn	SH5525	2006	Cofnod	SSSI, SAC, NNR
Llanfihangel-y-Pennant	SH60U	2010		SSSI, SAC
Llanycil	SH93C	2011		SSSI, SAC, Ramsar
Blaen y Ddol	SJ04H	2009		

Apparently rare in the county and never recorded by PMB. Perhaps these are errors for *E. obscurum*. Benoit and Richards [1963] refer to *E. obscurum* as "Square-stalked Willowherb".

Epilobium x aggregatum = E montanum x obscurum

Hybrid willowherb

Helyglys croesryw

Native hybrid

Local status: Scarce

Site	Gridref	Year	Comment	Protection
VC48 Merionethshire	SH52	2011		
VC48 Merionethshire	SH61	2011		
Trawsfynydd	SH696383	1997		
S of Ganllwyd	SH729234	1997		SSSI, SAC
VC48 Merionethshire	SH74	1999		
VC48 Merionethshire	SH779104	1985		

Certain to be under-recorded; old records in SH7317 and SH9234.

Epipactis helleborine

Broad-leaved helleborine

Y galdrist lydanddail

Native

Local status: Scarce

Site	Gridref	Year	Comment	Protection
VC48 Merionethshire	SH61	1999		
VC48 Merionethshire	SH7131	1993		SSSI, SAC
Coed-y-brenin; Moel Dol-frwynog	SH7424	2000	Cofnod [site centroid]	SSSI, SAC
VC48 Merionethshire	SH81	1999		
Cefn Prys, Llanuwchllyn	SH83	2004		
Coed Cae	SH8917	1984		
Blaen y Ddol	SJ02844432	2009		
Parc Ucha	SJ03674555	2009		
Llangar	SJ04R	2008		SSSI, SAC

Uncommon but only just scarce. Older records from SH70, SH71, SH91, SH93 and SN69.

Epipactis palustris

Marsh helleborine

Caldrist y gors

Native

Local status: Scarce

Site	Gridref	Year	Comment	Protection
Morfa Dyffryn	SH52M	2010		SSSI, SAC, NNR
Shell Island	SH52N	2010		SSSI, SAC, NNR
Morfa Dyffryn	SH5525	2008		SSSI, SAC, NNR
Harlech Dunes, Morfa Harlech	SH56803214	2009		SSSI, SAC
Sanddunes, Morfa Dyffryn	SH573224	2005	Cofnod	SSSI, SAC

Restricted coastal distribution, but locally abundant.

Epipactis phyllanthes

Green-flowered helleborine

Y galdrist felynwerdd

Native

Local status: Rare

Welsh Status: Vulnerable

Site	Gridref	Year	Comment	Protection
Morfa Dyffryn	SH557251	2008	Cofnod	SSSI, SAC, NNR
VC48 Merionethshire	SH559248	1990		SSSI, SAC, NNR
Morfa Dyffryn	SH56082550	2010		SSSI, SAC, NNR
Sanddunes, Morfa Dyffryn	SH5722	2005	Cofnod	SSSI, SAC

Rare but locally frequent.

Equisetum telmateia

Great horsetail

Marchrawnen fawr

Native

Local status: Scarce

Site	Gridref	Year	Comment	Protection
VC48 Merionethshire	SH51	1986		
Tonfanau Quarry	SH5703	2013		SSSI
Coed Cors y Gedol, near river	SH599223	2012		SSSI, SAC
Coed Cors y Gedol	SH604225	2012		SSSI, SAC
Gwyn-fynydd Mines	SH73722805	2012		SSSI

Not recently recorded from SN69.

Equisetum variegatum

Variegated horsetail

Marchrawnen fraith

Native

Local status: Rare

Site	Gridref	Year	Comment	Protection
Sanddunes, Morfa Dyffryn	SH52S	2013		SSSI, SAC, NNR
Morfa Dyffryn	SH5525	2008	Cofnod	SSSI, SAC, NNR
Morfa Harlech	SH573313	2013		SSSI, SAC

Erigeron acer

Blue fleabane

Amrhydlwyd glas

Native

Local status: Rare

Site	Gridref	Year	Comment	Protection
Harlech West	SH53Q	2007		SSSI, SAC, NNR
Morfa Dyffryn	SH5525	2006	Cofnod	SSSI, SAC, NNR

Erodium lebelii

Sticky stork's-bill

Pig-y-crëyr ludiog

Native

Local status: Rare

Site	Gridref	Year	Comment	Protection
VC48 Merionethshire	SH53	1999		
Sanddunes, Morfa Dyffryn	SH573224	2005	Cofnod [site centroid]	SSSI, SAC

Only recorded at Morfa Dyffryn and Morfa Harlech.

Erodium maritimum

Sea stork's-bill

Pig-y-crëyr arfor

Native

Local status: Rare

Site	Gridref	Year	Comment	Protection
Tonfanau	SH50R	2009		SSSI, SAC
VC48 Merionethshire	SH61	1999		
Aberdyfi-Tywyn	SN596972	1992		SSSI
Aberdyfi	SN69	1977		

Erophila glabrescens

Glabrous whitlowgrass

Llyisiau'r-bystwn llyfn

Native

Local status: Rare

Site	Gridref	Year	Comment	Protection
Barmouth	SH61	2007		

A single record by PMB, possibly otherwise included in *E. verna* s.l.***Erophila majuscula***

Hairy whitlowgrass

Llyisiau'r-bystwn blewog

Native

Local status: Dubious

Not recorded in database or VCCC but possibly overlooked in the dunes. Recorded in VC46 just across the Dyfi estuary.

***Euphorbia amygdaloides* subsp.
*amygdaloides***

Wood spurge

Llaethlys y coed

Native

Local status: Rare

Site	Gridref	Year	Comment	Protection
Glan Dulas	SH70L	2010		
VC48 Merionethshire	SH8024	1999		SSSI, SAC, NNR
Ogof Ddu	SH894213	1993		

Known for over 50 years in SH70: possibly native.

Euphorbia portlandica

Portland spurge

Llaethlys Portland

Native

Local status: Scarce

Site	Gridref	Year	Comment	Protection
Morfa Dyffryn	SH52S	2010		SSSI, SAC, NNR
Morfa Dyffryn	SH5525	2008	Cofnod	SSSI, SAC, NNR
Morfa Harlech NNR	SH571315	2013		SSSI, SAC, NNR
Sanddunes, Morfa Dyffryn	SH573224	2005	Cofnod [site centroid]	SSSI, SAC

An old record from SH61.

***Euphrasia anglica* see *E officinalis* subsp.
*anglica***

Euphrasia arctica* subsp. *borealis

An eyebright

Effros yr Arctig

Native

Local status: Scarce

National status: Data deficient

Welsh Status: Near threatened

Site	Gridref	Year	Comment	Protection
Sanddunes, Morfa Dyffryn	SH573224	2005	Cofnod [site centroid]	SSSI, SAC
VC48 Merionethshire	SH61	1999		
Cwm Nantcol	SH62I	2011		SSSI, SAC
VC48 Merionethshire	SH70	1999		
VC48 Merionethshire	SH72	1999		
VC48 Merionethshire	SH73	1999		
Cae-clyd, 15km NW of	SH730193	1987		
VC48 Merionethshire	SH82	1999		
Trawscoed	SH845327	2009		
VC48 Merionethshire	SN59	1999		

Under-recorded to species level, but still hardly scarce.

Euphrasia cambrica

An eyebright

Effros Cymreig

Endemic

Local status: Rare

National status: Vulnerable

Welsh Status: Endangered, Section 42

Site	Gridref	Year	Comment	Protection
Llyn y Gafr	SH711139	1987		SSSI, SAC
Llyn Aran, above	SH733136	1987		SSSI, SAC

In the high mountains and on the more basic soils at Brithdir [SH71] by P F Yeo in 1955.

Euphrasia confusa* x *nemorosa

Hybrid eyebright

Effros croesyw

Native hybrid

Local status: Rare

Arthog	SH6414	1915		SSSI, SAC
Trystion valley above Cynwyd	SJ04	2007		
Cynwyd, Liberty Hall	SJ04V	2007		SSSI, SAC

Rare but doubtless under-recorded, as this is the commonest hybrid. An old record in SH61.

Euphrasia confusa* x *scottica

Hybrid eyebright

Effros croesyw

Native hybrid

Local status: Rare

Rare - all records are now very old [SH61, SH62, SH71 and SH72 - all before 1965].

Euphrasia micrantha

An eyebright

Effros mân-flodeuog

Native

Local status: Rare

National status: Data deficient

Welsh Status: Vulnerable

Site	Gridref	Year	Comment	Protection
VC48 Merionethshire	SH64	1999		
Cadair Idris	SH71	1984		SSSI, SAC
Tir Stent	SH7516	1971		SSSI, SAC

Perhaps only scarce, but not recently recorded. Older records from SH60, SH61, SH62, SH72, SH82 and SJ04.

Euphrasia officinalis* subsp. *anglica

An eyebright

Effros Lloegr

Endemic

Local status: Scarce

National status: Endangered

Welsh Status: Vulnerable, Section 42

Site	Gridref	Year	Comment	Protection
VC48 Merionethshire	SH60	1999	Det H W Pugsley	
VC48 Merionethshire	SH61	1999	det P D Sell and P F Yeo	
Mynydd Dolgoed	SH71	2004		
Glydyfrdwy Nant y Pandy	SJ14K	2007	det P M Benoit	SSSI, SAC

Very many old records from SH52, SH53, SH62, SH70, SH72 and SN69; perhaps under-recorded due to species ID confusion.

Euphrasia ostenfeldii* x *scottica

Hybrid eyebright

Effros croesyw

Native hybrid

Local status: Rare

Site	Gridref	Year	Comment	Protection
Brithdir	SH71	1955	det P F Yeo	

A single record by PMB 1955 determined by P F Yeo.

Euphrasia rivularis

An eyebright

Effros y nant

Endemic

Local status: Rare

National status: Vulnerable

Welsh Status: Endangered, Section 42

No modern records but three pre-1960 ones from SH71 and SH72 by Marshall and Vice and determined by Pugsley and Yeo.

Euphrasia tetraquetra

An eyebright

Effros y Gorllewin

Native

Local status: Rare

National status: Data deficient

Site	Gridref	Year	Comment	Protection
VC48 Merionethshire	SH53	1999		
Sanddunes, Morfa Dyffryn	SH573224	2005	Cofnod [site centroid]	SSSI, SAC
VC48 Merionethshire	SN59	1999		
VC48 Merionethshire	SN69	1999		

Records from this habitat are probably the following two hybrids [Silverside, *pers. comm*]***Euphrasia tetraquetra x confusa***

Hybrid eyebright

Effros croesyw

Native

Local status: Rare

Site	Gridref	Year	Comment	Protection
Harlech West	SH53Q	2007	det A J Silverside	SSSI, SAC, NNR

See *E. tetraquetra* note***Euphrasia tetraquetra x nemorosa***

Hybrid eyebright

Effros croesyw

Native

Local status: Rare

Site	Gridref	Year	Comment	Protection
Tonfanau	SH50R	2009		SSSI, SAC

Doubtless under-recorded. See *E. tetraquetra* note***Fallopia convolvulus***

Black-bindweed

Y glymog ddu

Archaeophyte

Local status: Scarce

Site	Gridref	Year	Comment	Protection
VC48 Merionethshire	SH50	1999		
VC48 Merionethshire	SH52	1999		
VC48 Merionethshire	SH53	1999		
VC48 Merionethshire	SH61	1999		
VC48 Merionethshire	SH81	1999		
VC48 Merionethshire	SH82	1999	unknown	
Llandrillo	SJ032369	2013		
Rhos y Maerdy	SJ03P	2007		SSSI, SAC

Probably declining; and lacking recent records. Older records from SH51, SH60, SH63 SH70, SH71 SH83 SH92, SH93, SJ04 and SN59.

Festuca altissima

Wood fescue

Peiswellt y coed

Native

Local status: Scarce

Site	Gridref	Year	Comment	Protection
Arthog	SH61	1990		
Ffestiniog, S+E of	SH74A	1987		SSSI, SAC, NNR
Torrent Walk	SH754186	1999		SSSI, SAC
Pont Helygog	SH7819	2011		SSSI, SAC
Nant Cwm Celli	SH784101	1991	perhaps just in VC47	
VC48 Merionethshire	SH82	1986		

Always a scarce plant - many records very old e.g. SH72 [1962].

Festuca arenaria

Rush-leaved fescue

Peiswellt dail brwyn

Native

Local status: Rare

Site	Gridref	Year	Comment	Protection
Morfa Dyffryn	SH5525	2006	Cofnod	SSSI, SAC, NNR
Dunes, Morfa Harlech	SH56803214	2009		SSSI, SAC

The only records.

Festuca filiformis

Fine-leaved sheep's-fescue

Peiswellt mainddail

Native

Local status: Scarce

Site	Gridref	Year	Comment	Protection
Coed y Rhygen	SH6837	1984		SSSI, SAC, NNR
Llyn y Gafr (below), Fox's Path	SH707153	2010		SSSI
Tir Stent	SH71N	2000		SSSI, SAC
Coed Cae	SH8917	1984		
Dugod Mawr, Mallwyd.	SH893124	1993	Cofnod	
near Penyrallt, Cefnddwysarn	SH94	2005		
Coed y Bedo	SH94Q	2005		
Glyndyfrdwy S	SJ14F	2008		SSSI, SAC

Doubtless overlooked.

Filago gallica

Narrow-leaved cudweed

Edafeddog gulddail

Archaeophyte

Local status: Extinct

National status: Extinct

A single doubtful record from 1919 [SH93].

Filago minima

Small cudweed

Edafeddog fach

Native

Local status: Rare

Site	Gridref	Year	Comment	Protection
VC48 Merionethshire	SH50	1999		
VC48 Merionethshire	SH52	1986		
Morfa Mawddach Old Railway Track	SH6617	1994	Cofnod	SSSI, SAC
VC48 Merionethshire	SH72	1999		

Probably now rare: not recently recorded. Old records from SH53 and SH72.

Filago vulgaris

Common cudweed

Edafeddog lwyd

Native

Local status: Extinct

National status: Near threatened

Welsh Status: Vulnerable

Perhaps now extinct. Last recorded in 1970. Older records from SH50, SH52, SJ04 and SN69.

Frangula alnus

Alder buckthorn

Breuwydden

Native

Local status: Rare

Site	Gridref	Year	Comment	Protection
VC48 Merionethshire	SH64	1999		
N. of Dolgellau	SH71J	2004		SSSI, SAC
Dol Gain S	SH728296	2011		

In at least 3 hectads but some records are very old and need re-finding, including one at Ganllwyd in woods SH72H [1963].

Fumaria bastardi

Tall ramping-fumitory

Mwg-y-ddaear grymus

Native

Local status: Scarce

Site	Gridref	Year	Comment	Protection
Tywyn	SH50	1992		
VC48 Merionethshire	SH52	1999		
VC48 Merionethshire	SH53	1999		
Portmadoc, E end of Cob	SH581378	1972		SSSI, SAC
Barmouth, Lo-cost supermarket	SH61	1992		
VC48 Merionethshire	SH71	1999		
VC48 Merionethshire	SN59	1999		
Aberdyfi	SN69	1992		

No post-Atlas records. Pre-1970 ones from SH51, SH53, SH60, SH70, and SH93.

Galeopsis angustifolia

Red hemp-nettle

Y benboeth goch

Archaeophyte

Local status: Extinct

National status: Critically endangered

Welsh Status: Critically endangered, Section 42

Last recorded in 1886 in SH61, SH71 AND SH74. Assumed to be extinct.

Galium album

Hedge bedstraw

Briwydd y clawdd

Native

Local status: Scarce

Site	Gridref	Year	Comment	Protection
Glaslyn Marshes (Compartment 9)	SH592386	1983	Cofnod [site centroid]	
VC48 Merionethshire	SH61	1999		
Llwyn-iarth	SH702173	1992	Cofnod	
Llanelltyd churchyard	SH71	2004		
Coed y Brenin Forest Centre	SH723271	2009	Cofnod	
VC48 Merionethshire	SH73	1999		
Glan Llyn	SH888319	2005	Cofnod	
Carrog North	SJ14C	2008		

Occasionally found in the county - status uncertain.

Galium boreale

Northern bedstraw

Briwydd y Gogledd

Native

Local status: Scarce

Site	Gridref	Year	Comment	Protection
VC48 Merionethshire	SH64	1986		
VC48 Merionethshire	SH71	1999		
VC48 Merionethshire	SH73	1999		
VC48 Merionethshire	SH74	1971		
Cae-heuad	SH775231	2010		
VC48 Merionethshire	SH81	1999		

Also an old [1898] record from SH61 by Ruddy.

Galium mollugo* see *Galium album

Genista anglica

Petty whin

Cracheithinen

Native

Local status: Scarce

National status: Near threatened

Site	Gridref	Year	Comment	Protection
Cors Coch	SH69923439	2011		SSSI, SAC
VC48 Merionethshire	SH71	1999		
VC48 Merionethshire	SH72	1999		
VC48 Merionethshire	SH82	1999		
Trawscoed	SH848324	1990		
Trawscoed	SH850328	1990		
Trawscoed	SH851331	1989		
Castell	SH866323	1997		

The western hectads have not recently been updated; older records from SH63, SH70, SH71, SH73, SH82 and SH93.

Genista pilosa

Hairy greenweed

Corfanhadlen flewog

Native

Local status: Scarce

National status: Near threatened

Welsh Status: Vulnerable

Site	Gridref	Year	Comment	Protection
National Trust, Cadair Idris	SH700135	1993	Cofnod	SSSI, SAC
Pentre Dolamarch, Cwm Amarch NW of	SH714113	1987		SSSI, SAC
Mynydd y Gader, Cader Idris	SH717150	1978		SSSI, SAC
Llyn y Gafr (below), Fox's Path	SH7180714934	2010		SSSI, SAC
Cadair Idris, Mynydd y Gadair	SH720143	1987		SSSI, SAC
Mynydd y Gader, Cader Idris	SH722143	1978		SSSI, SAC
Cadair Idris	SH725133	2001		SSSI, SAC, NNR
Mynydd y Gader, Cader Idris	SH726141	1978		SSSI, SAC
Cadair Idris, Mynydd Moel	SH727129	1987		SSSI, SAC, NNR
Cadair Idris, Gau Graig SSSI	SH746146+	1987		SSSI, SAC

This important population seems scattered in perhaps 3 or 4 Wells sites across Cadair Idris in SH71.

Gentianella campestris

Field gentian

Crwynllys y maes

Native

Local status: Scarce

National status: Vulnerable

Welsh Status: Endangered, Section 42

Site	Gridref	Year	Comment	Protection
VC48 Merionethshire	SH52	1986		
Morfa Harlech	SH558341	2004		SSSI, SAC, NNR
VC48 Merionethshire	SH61	1999		
VC48 Merionethshire	SH62	1975		
Trawscoed	SH845328	1990		

Scarce and lacking recent records - apparently declining. Pre-1970 ones from SH92 and SH93.

Geranium columbinum

Long-stalked crane's-bill

Pig-yr-aran hirgoes

Native

Local status: Rare

Site	Gridref	Year	Comment	Protection
VC48 Merionethshire	SH50	1986		
VC48 Merionethshire	SH52	1986		
VC48 Merionethshire	SH53	1986		
VC48 Merionethshire	SJ03	1971		

No recent records.

Geranium pusillum

Small-flowered crane's-bill

Pig-yr-aran fân-flodeuog

Native

Local status: Rare

Site	Gridref	Year	Comment	Protection
VC48 Merionethshire	SH61	1999		
VC48 Merionethshire	SN69	1977		

Very rare.

Geranium sanguineum

Bloody crane's-bill

Pig-yr-aran ruddgoch

Native

Local status: Rare

Site	Gridref	Year	Comment	Protection
VC48 Merionethshire	SH52	1986		
VC48 Merionethshire	SH61	1999		

Rare: no site details and not recently recorded in the county. An old record from SN69.

Geum x intermedium = G rivale x urbanum

Hybrid avens

Mapgoll groesryw

Native hybrid

Local status: Rare

No post-70 records and no location details from SH71, the only hectad.

Glaucium flavum

Yellow horned-poppy

Pabi corniog melyn

Native

Local status: Scarce

Site	Gridref	Year	Comment	Protection
Tonfanau	SH50R	2009		SSSI, SAC
Dalar, Afon Ysgethin	SH5721	2013		SSSI, SAC
Llwyngwriil	SH578088	2011		SSSI, SAC
Fairbourne S	SH61B	2011		SSSI, SAC
Morfa Mawddach Old Railway Track	SH6214	1994	Cofnod	SSSI, SAC

Glebionis segetum

Corn marigold

Melyn yr ŷd

Archaeophyte

Local status: Rare

National status: Vulnerable

Site	Gridref	Year	Comment	Protection
VC48 Merionethshire	SH50	1986		

No modern records, perhaps extinct. Records from SH52, SH60, SH62, SH63, SH72, SH73, SH83, SJ04 and SN69 have not been updated since 1970.

Glyceria notata

Plicate sweet-grass

Melyswellt plygedig

Native

Local status: Rare

Perhaps overlooked but only two old and dubious records, from SH50 and SH70.

Glyceria x pedicellata = G fluitans x notata

Hybrid sweet-grass

Melyswellt croesryw

Native hybrid

Local status: Scarce

Site	Gridref	Year	Comment	Protection
VC48 Merionethshire	SH53	1999		
VC48 Merionethshire	SH61	1986		

Not recorded since 1970 from SH51, SH52, SH64, SH70 and SN69.

Gnaphalium sylvaticum

Heath cudweed

Edafeddog y rhos

Native

Local status: Rare

National status: Endangered

Welsh Status: Critically endangered

Pre-1970 records only from SH52, SH71, SH72, SH82, SH93 and SH94.

Gymnadenia conopsea

Fragrant orchid

Tegeirian pêr

Native

Local status: Scarce

Welsh Status: Section 42

Site	Gridref	Year	Comment	Protection
VC48 Merionethshire	SH52	1986		
Cwm Nantcol	SH61652683	1975	Cofnod	
VC48 Merionethshire	SH63	1986		
Cwm Mynach Isaf, Bontddu	SH686221	2002	Cofnod	
Dolgain, Trawsfynydd	SH729303	1992	Cofnod	
Tir Stent	SH752167+	1986	Cofnod	SSSI
Tir Stent	SH7560316952	2009		SSSI, SAC
Cae-heuad	SH771229	2010		

Described as "frequent" by Benoit & Richards [1963]. Many sites are known to have disappeared and it is probably now rare in the county. Older records from SH61, SH64, SH74, SH82 and SH92.

Hammarbya paludosa

Bog orchid

Tegeirian bach y gors

Native

Local status: Rare

Welsh Status: Endangered, Section 42

Site	Gridref	Year	Comment	Protection
Corris	SH747079	1970		
Tir Stent	SH7516	1975		SSSI, SAC
Cwm Cywarch	SH848197	1975		

Now very rare; no post-1975 records and recent efforts to refind this elusive orchid have been unsuccessful. Pre-1970 records from SH61, SH64, SH71 [Gwerngraig and Cross Foxes].

Helianthemum nummularium

Common rock-rose

Cor-rosyn cyffredin

Native

Local status: Rare

Site	Gridref	Year	Comment	Protection
Castell Prysor SSSI	SH7536	2014		SSSI
Cau-heuad	SH773230	2011		
VC48 Merionethshire	SH82	1999		

Recorded in the more base-rich sites only and no records since 1970 from SH71.

Helictotrichon pubescens* see *Avenula pubescens

Hippuris vulgaris

Mare's-tail

Rhawn y gaseg

Native

Local status: Rare

Welsh Status: Near threatened

Site	Gridref	Year	Comment	Protection
Harlech Forest	SH53R	2003		SSSI, SAC, NNR
Morfa Harlech	SH5634	1998		SSSI, SAC, NNR

Only recorded in Harlech NNR. Records from three adjacent monads in SH53 were published in 1963 [Benoit & Richards, 1963].

Hyoscyamus niger

Henbane

Llewyg yr iâr

Archaeophyte

Local status: Scarce

National status: Vulnerable

Site	Gridref	Year	Comment	Protection
Llangelynnin-Towyn	SH50	1970		
Tywyn	SH50	1976		
Mochras	SH5526	1994		SSSI, SAC, NNR
Fairbourne Spit	SH6114	1994		SSSI, SAC

Probably reflecting the national decline there have been no records this millennium and so now rare.

Hypericum hirsutum

Hairy St John's-wort

Eurinllys blewog

Native

Local status: Rare

Site	Gridref	Year	Comment	Protection
Harlech Forest	SH53R	2003		SSSI, SAC, NNR

Of only casual occurrence in Merioneth. Also 19C records from Barmouth [SH61] and Dolgellau [SH61].

Hypericum linariifolium

Toadflax-leaved St John's-wort

Eurinllys culddail

Native

Local status: Extinct

National status: Near threatened

Welsh Status: Vulnerable

A single record from 1907 [Barmouth, SH61]. Not in Benoit & Richards [1963].

Hypericum undulatum

Wavy St John's-wort

Eurinllys tonnog

Native

Local status: Rare

Site	Gridref	Year	Comment	Protection
Arthog Bog	SH61H	2005		SSSI, SAC

Recent update of its only known site in the Vice-county.

Hypericum x desetangii = H maculatum x perforatum

Hybrid St-John's-wort

Eurinllys croesryw

Native hybrid

Local status: Scarce

Site	Gridref	Year	Comment	Protection
Morfa Mawddach	SH628139	1971		
Llyn Celyn, old railway	SH83P	2007		SSSI, SAC
Llyn Tegid	SH8831	2007		SSSI, SAC, Ramsar
Llyn Tegid	SH92603544	2007		SSSI, SAC, Ramsar
Cynwyd	SJ04K	2008		SSSI, SAC

Very scattered; many of these sites also hold *H. perforatum*, which is not widespread in the Vice-county.

Hypochaeris glabra

Smooth cat's-ear

Melynydd moel

Native

Local status: Rare

National status: Vulnerable

Site	Gridref	Year	Comment	Protection
VC48 Merionethshire	SH50	1986		
Morfa Harlech	SH53	1971		SSSI, SAC
Llanbedr Airfield West	SH56412516	2013		SSSI, SAC
Fairbourne Spit	SH61	1973		SSSI, SAC

Until recently it was thought possibly extinct but at least 100 plants found in 2013, over an area of c. 15 x 15 metres.

Hypopitys monotropa

Yellow bird's-nest

Cytwf

Native

Local status: Rare

National status: Endangered

Welsh Status: Section 42

Site	Gridref	Year	Comment	Protection
Harlech Forest	SH5732	2003		SSSI, SAC
VC48 Merionethshire	SH72	1999		

No further details known about the SH72 record.

Illecebrum verticillatum

Coral necklace

Y glymog droellenog

Native

Local status: Extinct

National status: Vulnerable

Probably now extinct. Recorded by Ruddy in 1897 but not mentioned by Jones, 1898.

Impatiens noli-tangere

Touch-me-not balsam

Ffromlys melyn

Native

Local status: Scarce

Welsh Status: Near threatened

Site	Gridref	Year	Comment	Protection
Coed Afon Morfa, Mawddach	SH633136	1999	Cofnod	
Garth Isaf, Mawddach	SH655159	1999	Cofnod	
Coed y Garth	SH662164	1999	Cofnod	
Afon Mawddach, Llanelltyd	SH720193	2002	Cofnod	
Henardd Arboretum	SH743202+	1996	Cofnod	
Pont Glasdir, Coed y Brenin	SH743225	1994	Cofnod	

Scarce although often locally abundant. Surveyed in 1999 by M Hammett for Butterfly Conservation. It is the food plant of the rare Netted Carpet moth, *Eustroma reticulatum*.

Inula conyzae

Ploughman's-spikenard

Meddyg y bugail

Native

Local status: Rare

Site	Gridref	Year	Comment	Protection
VC48 Merionethshire	SH53	1986		
VC48 Merionethshire	SH61	1999		

Very rare; no modern records. Older records at Harlech Castle, SH53, in 1960 and near Aberdyfi in 1927 and 1963 [SH59 and SH69].

Isoetes echinospora

Spring quillwort

Gwair merllyn bach

Native

Local status: Scarce

Site	Gridref	Year	Comment	Protection
Afon Mawddach	SH61	1970		SSSI, SAC
Llyn Tecwyn Isaf	SH63	1981		
Llyn Mair	SH6541	1974		SSSI, SAC, NNR
Llyn Gwernan	SH71	1987		
Llyn Wylfa, N side of Cadair Idris	SH71	1984		
VC48 Merionethshire	SH72	1999		
Llyn Morwynion	SH737423	2009		SSSI, SAC
Llyn Caereuni	SH94V	2010		

May well exist in more lakes in the county.

Juncus inflexus

Hard-rush

Brwynen galed

Native

Local status: Rare

Site	Gridref	Year	Comment	Protection
VC48 Merionethshire	SH53	1999		
Arthog Embankment	SH61M	2011		SSSI, SAC
Hafod y Calch	SJ04L	2008		SSSI, SAC

Older records in SH71.

Juncus subnodulosus

Blunt-flowered rush

Brwynen flaendon

Native

Local status: Scarce

Site	Gridref	Year	Comment	Protection
Talybont to Llanaber	SH51	1999		
Minffordd, meadows nr R Glaslyn	SH53	1999		
VC48 Merionethshire	SH61	1999		
VC48 Merionethshire	SH63	1986		
Penmaenpool, Dolgellau	SH71	2000		
VC48 Merionethshire	SN59	1999		

Perhaps overlooked - not recorded recently.

Kickxia elatine

Sharp-leaved fluellen

Llyisiau Llywelyn

Archaeophyte

Local status: Rare

Site	Gridref	Year	Comment	Protection
Cwm Rhwyddfor Quarry	SH71L	2009		SSSI, SAC
Penhelig, Aberdyfi	SN69	1985		

Probably only casual in the county - very rare.

Knautia arvensis

Field scabious

Clafrllys y maes

Native

Local status: Scarce

Site	Gridref	Year	Comment	Protection
VC48 Merionethshire	SH52	1999		
Morfa Harlech fields	SH584338	1992	Cofnod	SSSI, SAC
Llanelltyd, nr Glan-y-morfa	SH71	1963		
Bala, Cywain	SH93I	2009		SSSI, SAC
VC48 Merionethshire	SJ03	1999		
Glan-yr-afon, SW of	SJ04A	1987		
Corwen North	SJ04S	2011		SSSI, SAC
Maes y Gamedd	SJ04T	2011		
Corwen	SJ078444	2009		

Scattered, particularly in east. Older record in SH61.

Koeleria macrantha

Crested hair-grass

Cribwellt

Native

Local status: Rare

Site	Gridref	Year	Comment	Protection
Fairbourne peninsula	SH6114	2002		SSSI, SAC
VC48 Merionethshire	SN69	1991		

Very rare; an older record from SH71 was determined by C E Hubbard.

Lamiastrum galeobdolon subsp. montanum

Yellow archangel

Marddanhadlen felen

Native

Local status: Scarce

Site	Gridref	Year	Comment	Protection
VC48 Merionethshire	SH50	1999		
VC48 Merionethshire	SH53	2006		
Egryn Abbey	SH5920	2013		
VC48 Merionethshire	SH61	1999		
VC48 Merionethshire	SH63	1971		
VC48 Merionethshire	SH64	1999		
Glan Dulas	SH70L	2010		
Aberdyfi	SN63949657	1978		SSSI

Old records from SH71 and SJ04. *L. galeobdolon subsp. argentatum* is not scarce.

Lamium amplexicaule

Henbit dead-nettle

Marddanhadlen goch ddeilgron

Archaeophyte

Local status: Rare

Site	Gridref	Year	Comment	Protection
VC48 Merionethshire	SH53	1972		
VC48 Merionethshire	SH61	1999		

Rare archeophyte of cultivation, not recently seen. An old record from SH93 [1898].

Lathraea squamaria

Toothwort

Deintlys

Native

Local status: Rare

Site	Gridref	Year	Comment	Protection
VC48 Merionethshire	SJ14	1977		

Not seen for >36 years and an older record from SH82.

Lathyrus palustris

Marsh pea

Ytbyesen y gors

Native

Local status: Extinct

National status: Near threatened

Recorded near Bala in 1830 but no subsequent records.

Leymus arenarius

Lyme-grass

Clymwellt

Native

Local status: Rare

Site	Gridref	Year	Comment	Protection
VC48 Merionethshire	SH50	1999		
VC48 Merionethshire	SH51	1986		
VC48 Merionethshire	SH53	1999		

Described by Chater [2010] as "rare and impermanent" in vc46 and there are no recent records in Merioneth. Perhaps overlooked. Older records in SH61 and SN69.

Limonium humile

Lax-flowered sea-lavender

Lafant-y-môr blodau llac

Native

Local status: Rare

Site	Gridref	Year	Comment	Protection
RAF Llanbedr	SH52T	2010		SSSI, SAC, NNR
Morfa Harlech	SH53	1992		SSSI, SAC
Morfa Friog	SH6114	2011		SSSI, SAC

More rarely recorded than *L. vulgare* but perhaps not always differentiated from it.

Limonium vulgare

Common sea-lavender

Lafant y môr

Native

Local status: Scarce

Site	Gridref	Year	Comment	Protection
RAF Llanbedr	SH52T	2010		SSSI, SAC, NNR
Morfa Dyffryn	SH5526	2006	Cofnod	SSSI, SAC, NNR
Aber Dysynni	SH582027	1989	Cofnod	SSSI
Llechollwyn, Ynys	SH596357	1996	Cofnod	
Marsh, Garth Isaf, Arthog	SH653161	2004	Cofnod	SSSI, SAC

Limosella aquatica

Mudwort

Lleidlys

Native

Local status: Scarce

Site	Gridref	Year	Comment	Protection
Llyn Tegid	SH890309	1979		SSSI, SAC, Ramsar
Llyn Tegid	SH8931	1994		SSSI, SAC, Ramsar
Llyn Tegid	SH915335	1988		SSSI, SAC, Ramsar
Llyn Tegid	SH9235	1996		SSSI, SAC, Ramsar

Only from sites around Llyn Tegid [Bala]. No recent records.

Limosella australis

Mudwort

Lleidlys Cymreig

Native

Local status: Rare

National status: Waiting list

Welsh Status: Waiting list

Site	Gridref	Year	Comment	Protection
Afon Glaslyn at Boston Lodge	SH585380	1994		SSSI
Bryncrug	SH5974703393	2009		SSSI
River Dwyrdd	SH650399	1994		

Locally frequent in its 3 sites.

Linaria x sepium = L repens x vulgaris

Hybrid toadflax

Llin-y-llyffant croesyw

Native hybrid

Local status: Rare

Site	Gridref	Year	Comment	Protection
Morfa Mawddach Old Railway Track	SH6313	1994	Cofnod	SSSI, SAC
Morfa Mawddach Old Railway Track	SH6818	1994	Cofnod	SSSI, SAC

A "railway" natural hybrid - not recently found. An old record [1941] from SH71.

Listera cordata* see *Neottia cordata***Listera ovata* see *Neottia ovata******Luronium natans***

Floating water-plantain

Llyriad-y-dŵr arnofiol

Native

Local status: Scarce

Welsh Status: Section 42

Site	Gridref	Year	Comment	Protection
Afon Glaslyn	SH5923641431	2008	Cofnod	SSSI, SAC
Llyn Cwm Bychan	SH6431	2006		SSSI, SAC
Llyn Cwmorthin	SH6746	2013		
Afon Eden at Pont y Grible	SH7030	2008		SSSI, SAC
Llyn Cynwch	SH738210	2003		SSSI
Llyn Tegid	SH89003132	2003		SSSI, SAC, Ramsar
Llyn Tegid	SH93	1990		SSSI, SAC, Ramsar
Llyn Caereuni	SH980406	2010		

Now well-recorded, but further records are possible in upland lakes. An old record from Llyn Eiddw Bach [SH6434] in 1955.

Luzula forsteri

Southern wood-rush

Coedfrwynen gulddail

Native

Local status: Rare

Site	Gridref	Year	Comment	Protection
Coed y Brenin	SH7127	2013		SSSI, SAC

A single specimen found in 2013 in probably its second most northerly station. [Herb. SES].

Lycopodiella inundata

Marsh clubmoss

Cnwpl-fwsogl y gors

Native

Local status: Rare

National status: Endangered

Welsh Status: Vulnerable, Section 42

Site	Gridref	Year	Comment	Protection
Llyn Cwm Bychan	SH645313	1999		SSSI, SAC

Cwm Bychan site is now probably the only chance of finding this again. Almost certainly extinct in SH9018 and not refound in SH72 or SH81 near Llanymawddwy.

Lysimachia vulgaris

Yellow loosestrife

Trewyn

Native

Local status: Scarce

Site	Gridref	Year	Comment	Protection
VC48 Merionethshire	SH51	1999		
Hafod y Llyn	SH598293	2007		
Trawsfynydd, Tyddyn yr Yn	SH702380	2006		
Dolgellau, N of	SH71J	1987		SSSI, SAC
Caerynwch estate	SH7617	2013		SSSI, SAC
VC48 Merionethshire	SH83	1999		
VC48 Merionethshire	SN589995	1974		
VC48 Merionethshire	SN69	1972		

Malva neglecta

Dwarf mallow

Corhocysen

Archaeophyte

Local status: Rare

Welsh Status: Near threatened

Site	Gridref	Year	Comment	Protection
Morfa Harlech	SH53	1984		SSSI, SAC
VC48 Merionethshire	SH61E	2012		

Rare archeophyte; an old record from SN69. "...probably declining in the west.....of its range" [Preston et al, 2000].

Marrubium vulgare

White horehound

Llwyd y cŵn

Native

Local status: Rare

Welsh Status: Near threatened

Site	Gridref	Year	Comment	Protection
Tonfanau	SH50R	2009		SSSI, SAC
Morfa Harlech, old racecourse	SH53	1976		SSSI, SAC

A rare casual, coastal. An old record from Aberdyfi, SN69.

Matricaria chamomilla

Scented mayweed

Amranwen bêr

Archaeophyte

Local status: Scarce

Site	Gridref	Year	Comment	Protection
VC48 Merionethshire	SH50	1970		
Pont Croesor	SH5941	2012		SSSI, SAC
Cors-y-gedol, Barmouth	SH61	2007		
Ffestiniog, Rhaeadr Cynfal	SH74A	1988		SSSI, SAC, NNR
Pen-y-foel-isaf	SJ04T	2013		

Casual.

Matthiola sinuata

Sea stock

Murwyll arfor

Native

Local status: Extinct

National status: Vulnerable

Welsh Status: Section 42

Site	Gridref	Year	Comment	Protection
Aberdyfi	SN69	1989		

Probably extinct. Old records from SH61 and SN69.

Meconopsis cambrica

Welsh poppy

Pabi Cymreig

Native

Local status: Scarce

Site	Gridref	Year	Comment	Protection
Sygun Copper Mine	SH64E	2007		SSSI, SAC, NNR
Trawsfynydd dam/culvert/Cwm Moch	SH665375	2006		
Dduallt	SH6742	2004	Cofnod	SSSI, SAC, NNR
Llyn y Gafr pillow lavas	SH71B	2009		SSSI, SAC, NNR
N. of Dolgellau	SH71J	2004		SSSI, SAC
Bryncoedifor	SH72V	2009		SSSI, SAC
Aber Corris	SH749084	1983	Cofnod [site centroid]	
SE of Llan Ffestiniog	SH74A	2003		SSSI, SAC, NNR
Pennant Dyfi	SH82	1980		
Ogof Ddu, N facing cliffs	SH894213	1993		

Probably scarce as a montane native but frequent in lowlands as a casual. An old record from Cwm Cywarch [SH81].

Medicago arabica

Black medick

Maglys brith

Native

Local status: Probably extinct

A single record [Aberdyfi Station, SN69] in Benoit & Richards [1963].

Melica nutans

Mountain melick

Meligwellt pendrwm

Native

Local status: Rare

Site	Gridref	Year	Comment	Protection
VC48 Merionethshire	SH72	1971		
VC48 Merionethshire	SH74	1999		

Rare: on calcareous rocks. Older records from SH71 [Gau Graig] and SH82 [Benglog].

Mentha pulegium

Pennyroyal

Brymlys

Native

Local status: Extinct

National status: Endangered

Welsh Status: Critically endangered, Section 42

Old (1904) record; considered introduced [Ellis, 1983].

Mentha suaveolens

Round-leaved mint

Mintys deilgrwn

Native

Local status: Scarce

National status: Data deficient

Welsh Status: Data deficient

Site	Gridref	Year	Comment	Protection
VC48 Merionethshire	SH50	1986		
VC48 Merionethshire	SH53	1999		
Bwlch yr Ysgol	SH651186	1991	Cofnod	
Aber Corris	SH749084	1983	Cofnod [site centroid]	
Llanymawddwy, R. Dyfi	SH9018	2013		SSSI
Rhyd-wen	SH9229	2012		
Llangar	SJ04R	2005		SSSI, SAC
VC48 Merionethshire	SN59	1999		

These records may include *M x villosa*, and are possibly not all native. Not re-recorded in SH52, SH71 and SN69 since 1970.

Mercurialis annua

Annual dog's mercury

Bresychen-y-cŵn flynyddol

Archaeophyte

Local status: Rare

Only pre-1970 records, from waste places by the sea.

Mertensia maritima

Oysterplant

Llysiau'r llymarch

Native

Local status: Extinct

National status: Near threatened

Welsh Status: Regionally Extinct

Last recorded in Aberdyfi SN69, pre-1797.

Meum athamanticum

Spignel

Ffenigl Elen Luyddog

Native

Local status: Scarce

National status: Near threatened

Welsh Status: Vulnerable

Site	Gridref	Year	Comment	Protection
Llanbedr, nr Craig Isaf	SH62	1976		
Pant Clyd, Llanuwchllyn	SH844257	1975	Cofnod	
Trawscoed	SH846328	2012		
Pant Gwyn	SH8527	2012		
Llechwedd Fwyalchen, Cwm Onnen	SH862275	1992	Cofnod	

Scarce but locally abundant in SH82. As part of the Threatened Plants Project it was re-found there and at Trawscoed but not in older sites in SH71, Gwerngraig and Helygog.

Milium effusum

Wood millet

Miledwellt y coed

Native

Local status: Scarce

Site	Gridref	Year	Comment	Protection
VC48 Merionethshire	SH50	1986		
VC48 Merionethshire	SH53	1999		
Coed Hafod y Bryn / Lower Wood, Llanbedr	SH588265	2012	Cofnod	
VC48 Merionethshire	SH63	1999		
VC48 Merionethshire	SH64	1999		
Morfa Mawddach Old Railway Track	SH6415	1994	Cofnod	SSSI, SAC
VC48 Merionethshire	SH71	1999		

Recorded only once since the last Atlas.

Minuartia hybrida

Fine-leaved sandwort

Tywodlys meindwf

Native

Local status: Dubious

National status: Endangered

Site	Gridref	Year	Comment	Protection
Llangower, 1km NE of	SH911331	1983		

Reliably recorded only once and not re-found. Probably a railway casual.

Minuartia verna

Spring sandwort

Tywodlys y gwanwyn

Native

Local status: Rare

National status: Near threatened

Welsh Status: Vulnerable

Site	Gridref	Year	Comment	Protection
Hermon	SH72	1989		

Hermon Copper Bog SSSI. Records from sites on Cader and Diffwys are by Sawley in 1863 [Jones, 1898] but are likely locations for further searching.

Misopates orontium

Weasel's-snout

Y trwyn-y-llo lleiaf

Archaeophyte

Local status: Rare

National status: Vulnerable

Site	Gridref	Year	Comment	Protection
VC48 Merionethshire	SH61	1999		
VC48 Merionethshire	SH64	1999		
VC48 Merionethshire	SN59	1999		

Older records from SH50, SH52 and SH60.

Moenchia erecta

Upright chickweed

Clust-y-llygoden seth/syth

Native

Local status: Rare

Site	Gridref	Year	Comment	Protection
Tywyn, nr	SH50	1977		
Llandderfel	SH93	1995		
Aberdyfi-Tywyn	SN59	1991		

3 records, one very old. Possibly overlooked: there is a record in Denbighshire very close to the Merioneth border in SH14.

Monotropa hypopitys* see *Hypopitys monotropa***Montia fontana* subsp. *amporitana***

Blinks

Porpin y ffynnon

Native

Local status: Scarce

National status: Waiting list

Site	Gridref	Year	Comment	Protection
VC48 Merionethshire	SH50	1999		
Llwyn, Llanegryn	SH60	2007		
Sylfaen, NE of Barmouth	SH61	2002		
above Llanbedr	SH62	2005		
Gwaith Powdwr North Wales Wildlife Trust reserve	SH63	2004		
Dolgellau area	SH71	1955		
VC48 Merionethshire	SH83	1999		
VC48 Merionethshire	SN59	1999		

More than half the VC records for *M. fontana* s.l. not determined to subspp., so difficult to assess their abundance.

Montia fontana* subsp. *chondrosperma

Blinks

Porpin y ffynnon

Native

Local status: Scarce

Site	Gridref	Year	Comment	Protection
Tywyn	SH50	2007		
Morfa Dyffryn Car Park and Dunes	SH573224	1996	Cofnod	SSSI, SAC
VC48 Merionethshire	SH604169	1956		
VC48 Merionethshire	SH61	1999		
VC48 Merionethshire	SH63	1986		
VC48 Merionethshire	SH71	1999		
VC48 Merionethshire	SH73	1986		
VC48 Merionethshire	SJ04	1999		
VC48 Merionethshire	SN59	1999		

More than half the VC records for *M. fontana* s.l. not determined to subspp., so difficult to assess their abundance.

Myosotis ramosissima

Early forget-me-not

Sgorpionllys ar

Native

Local status: Scarce

Site	Gridref	Year	Comment	Protection
Llanbedr Airfield West	SH52S	2013		SSSI, SAC, NNR
Llandanwg church	SH5628	2003		SSSI, SAC
Morfa Harlech NNR	SH5632	2013		SSSI, SAC, NNR
Morfa Harlech NNR	SH571316	2013		SSSI, SAC, NNR
Morfa Mawddach Old Railway Track	SH624148	1994	Cofnod	SSSI, SAC
Morfa Mawddach Old Railway Track	SH6415	1994	Cofnod	SSSI, SAC
Morfa Mawddach Old Railway Track	SH6617	1994	Cofnod	SSSI, SAC
Morfa Mawddach Old Railway Track	SH6717	1994	Cofnod	SSSI, SAC

Scattered along the coast.

Myriophyllum spicatum

Spiked water milfoil

Myrdd-ddail ysbigog

Native

Local status: Rare

Site	Gridref	Year	Comment	Protection
Morfa Harlech	SH565336	1998		SSSI, SAC
Small pond, Hafod y Llyn	SH597294	2013		

***Narcissus pseudonarcissus* subsp.
*pseudonarcissus***

Wild daffodil

Cenhinen-Bedr wyllt

Native

Local status: Extinct

Extinct as a native. Last recorded [?native] 1898 [SH71].

Neottia nidus-avis

Bird's-nest orchid

Tegeirian nyth aderyn

Native

Local status: Extinct

National status: Near threatened

Probably extinct. Benoit & Richards [1963]: "Brithdir churchyard, 1 plant 1952 but not since."

Neottia ovata

Common twayblade

Caineirian

Native

Local status: Scarce

Site	Gridref	Year	Comment	Protection
Morfa Dyffryn	SH5525	2008		SSSI, SAC, NNR
Morfa Dyffryn	SH560255	2010		SSSI, SAC, NNR
Morfa Dyffryn	SH5626	2008		SSSI, SAC, NNR
Harlech Dunes, Morfa Harlech	SH568321	2009		SSSI, SAC
Sanddunes, Morfa Dyffryn	SH573224	2005		SSSI, SAC
Borthwen Northeast/ Min y Don	SH598378	1992		
Llwyn-iarth	SH708174	2010		SSSI
Glasdir	SH737226	2010		SSSI, SAC
Cau-heuad	SH773230	2011		
Trawscoed	SH846327	2009		
VC48 Merionethshire	SH93	1986		

Perhaps not really scarce, but scattered through the county. Older records in SH61, SH70, SH73 and SJ04.

Nitella flexilis

A stonewort

Native

Local status: Scarce

Site	Gridref	Year	Comment	Protection
Ynys Fawr	SH5942	2012		SSSI, SAC
Afon Cwmnantcol	SH620267	1997		
VC48 Merionethshire	SH63	1999		
Llynnau Cregennen	SH6614	2012		SSSI
Llyn Cwm-mynach	SH678238	1988		
Llyn Trawsfynydd	SH703358	1986		
Y Lordship	SH859328	2009		
VC47 Montgomeryshire;VC48 Merionethshire	SH93	1999		

Perhaps under-recorded. Older records from SH52 and SH71.

Odontites vernus subsp. litoralis

Red bartsia

Gorudd

Native

Local status: Rare

Welsh Status: Waiting list

Site	Gridref	Year	Comment	Protection
Llanbedr	SH5626	1999		SSSI, SAC, NNR

One record only, by F.J.Rumsey: "...[it] is still under-recorded" [Preston et al, 2000].

Oenanthe fistulosa

Tubular water-dropwort

Cegiden bibellaidd

Native

Local status: Rare

National status: Vulnerable

Welsh Status: Section 42

Site	Gridref	Year	Comment	Protection
VC48 Merionethshire	SN59	1999		

Also an old record from SN69.

Ononis spinosa

Spiny restharrow

Tagaradr pigog

Native

Local status: Extinct?

An unlikely old record [1869] from SH93.

Ophioglossum azoricum

Small adder's-tongue

Tafod-y-neidr bach

Native

Local status: Rare

Welsh Status: Vulnerable

Site	Gridref	Year	Comment	Protection
Arthog	SH61	1992		
Aberdyfi-Tywyn	SN59	1992		

Not recently refound. An older record from SH53.

Ophioglossum vulgatum

Adder's-tongue

Tafod y neidr

Native

Local status: Scarce

Site	Gridref	Year	Comment	Protection
VC48 Merionethshire	SH53	1999		
Bennar	SH5722	2000		SSSI, SAC
VC48 Merionethshire	SH61	1999		
VC48 Merionethshire	SH64	1999		
VC48 Merionethshire	SH71P	1999		SSSI, SAC
VC48 Merionethshire	SH72	1999		
VC48 Merionethshire	SH73B	1999		SSSI, SAC
VC48 Merionethshire	SH73C	1999		SSSI, SAC
VC48 Merionethshire	SH93	1986		
VC48 Merionethshire	SJ04A	1999		
VC48 Merionethshire	SN59	1999		

Few recent records but previously found in many parts of the county.

Ophrys apifera

Bee orchid

Tegeirian y wenynen

Native

Local status: Rare

Site	Gridref	Year	Comment	Protection
VC48 Merionethshire	SH50	1976		
VC48 Merionethshire	SH53	1999		
Fairbourne Spit	SH61C	2002		SSSI, SAC
VC48 Merionethshire	SN5996+	2011		SSSI, SAC

Only very recently re-recorded in SN59, where many hundreds of plants have been seen in good years.

Orchis mascula

Early-purple orchid

Tegeirian coch y gwanwyn

Native

Local status: Scarce

Site	Gridref	Year	Comment	Protection
RAF Llanbedr	SH573266	1998	Cofnod	
VC48 Merionethshire	SH63	1986		
Farchynys, Bontddu	SH662184	1971	Cofnod	SSSI, SAC
VC48 Merionethshire	SH71	1999		
VC48 Merionethshire	SH72	1999		
VC48 Merionethshire	SH73	1999		
Cae-heuad	SH771229	1913		
Craig Ty-nant	SH82V	2009		SSSI
Daear Fawr, Arenig	SH836386	1913		SSSI, SAC

Many records not recently updated from SH50 and SJ04.

Orchis morio* see *Anacamptis morio***Orobanchae hederac***

Ivy broomrape

Gorfanhadlen eiddew

Native

Local status: Rare

Site	Gridref	Year	Comment	Protection
Barmouth, Porkington Terrace	SH61	1977		
VC48 Merionethshire	SN59	1999		
Aberdyfi, Penhelig	SN69	1991		

No recent, post-1999 records.

Orobanchae minor

Common broomrape

Gorfanhadlen

Native

Local status: Dubious

Site	Gridref	Year	Comment	Protection
VC48 Merionethshire	SH61	1986		

No details for this single hectad record.

Orobanche rapum-genistae

Greater broomrape

Gorfanhadlen fawr

Native

Local status: Scarce

National status: Near threatened

Site	Gridref	Year	Comment	Protection
Llanfair	SH5729	1974		SSSI, SAC
Telephone Exchange, Llanbedr	SH587267	1991	Cofnod	
Byrlllysg, Dyffryn Ardudwy	SH58942381	2005	Cofnod	
VC48 Merionethshire	SH64	1986		
Aberdyfi-Tywyn	SN59	1991		

Possibly rare; recorded from 6 hectads but none recently and one of which is 19C [SH81]. Also an old record from SH61.

Orthilia secunda

Serrated Wintergreen

Glesyn-y-gaeaf danheddog

Native

Local status: Dubious

Welsh Status: Endangered

Only one record ever made, from the eastern side of Dduallt [SH82]: numerous attempts to refind this have failed, but it is a site difficult to access and explore.

Otanthus maritimus

Cottonweed

Edafeddog y môr

Native

Local status: Extinct

National status: Extinct

Welsh Status: Extinct

An early record from SH61 but it is not in VCCC.

Oxyria digyna

Mountain sorrel

Suran y mynydd

Native

Local status: Scarce

Site	Gridref	Year	Comment	Protection
North Cliff of Moelwyn Mawr	SH656451+	1995	Cofnod	SSSI
Llyn y Gafr pillow lavas	SH71B	2004		SSSI, SAC, NNR
Cwm Aran	SH7313	2012		SSSI, SAC
Cwm Farm, Cwm Cynfal	SH733413	1994	Cofnod	
Cwm Cywarch	SH81P	2007		
Ogof Ddu, N facing cliffs	SH894213	1993		

On higher and more basic cliffs.

Papaver argemone

Prickly poppy

Pabi penwrychog

Archaeophyte

Local status: Rare

National status: Vulnerable

Welsh Status: Endangered

Site	Gridref	Year	Comment	Protection
Arthog, nr Ynysfechan	SH61	1977		
Morfa Mawddach railway station	SH61	1976		
Aberdyfi	SN69	1973		

Rare archeophyte with no recent records. "...susceptible to herbicides.." [Preston et al, 2000].

Parapholis incurva

Curved hard-grass

Caledwellt cam

Native

Local status: Rare

Site	Gridref	Year	Comment	Protection
Morfa Harlech	SH556344	1978		SSSI, SAC, NNR

Herb. NMW.

Parapholis strigosa

Hard-grass

Caledwellt y morfa

Native

Local status: Scarce

Site	Gridref	Year	Comment	Protection
VC48 Merionethshire	SH50	1999		
VC48 Merionethshire	SH52	1986		
VC48 Merionethshire	SH53	1999		
Morfa Friog S	SH6113	2011		SSSI, SAC
Morfa Friog N	SH6114	2011		SSSI, SAC
VC48 Merionethshire	SH63	1971		
Farchynys	SH6617	2012		SSSI, SAC

Local in salt marshes.

Parentucellia viscosa

Yellow bartsia

Gorudd melyn

Native

Local status: Rare

Welsh Status: Near Threatened

Site	Gridref	Year	Comment	Protection
Morfa Dyffryn	SH52	1974		SSSI, SAC
Morffa Harlech	SH574308	1993		SSSI, SAC

Not seen recently in these well-recorded sites.

Parnassia palustris

Grass of Parnassus

Brial y gors

Native

Local status: Dubious

Never recorded in the vice-county, although an anecdotal sighting was reported in SJ03 [c. 2000].

Persicaria bistorta

Common bistort

Llyisiau'r neidr

Native

Local status: Rare

Site	Gridref	Year	Comment	Protection
VC48 Merionethshire	SH83	1999		
Llanycil	SH916351	2011		
Llandderfel	SH9837	2012		SSSI, SAC
Betws, A494	SJ0142	1987		

Probably rare as native: an old record from SH70.

Persicaria lapathifolia

Pale persicaria

Canwraidd y dom

Native

Local status: Scarce

Site	Gridref	Year	Comment	Protection
VC48 Merionethshire	SH53	1999		
Pont Croesor railway embankment	SH595414	2008		SSSI
Fairbourne S	SH61B	2011		SSSI, SAC
VC48 Merionethshire	SH72	1971		
Llandrillo	SJ03I	2010		SSSI, SAC

Not re-recorded since 1970 from SH52, SH63, SH64, SH70, SH74 and SH93. "It is a poor competitor.." [Preston et al, 2000].

Persicaria minor

Small water-pepper

Y dinboeth fach

Native

Local status: Scarce

National status: Vulnerable

Site	Gridref	Year	Comment	Protection
Traeth Glaslyn RSPB reserve	SH589387	2013		SSSI, SAC
Llyn Trawsfynydd	SH698382	2012		
Llyn Tegid	SH8831	2007		SSSI, SAC, Ramsar
Llyn Tegid	SH92473546+	2012		SSSI, SAC, Ramsar
VC48 Merionethshire	SJ03	1986		

Scarce, but better recorded as a result of Threatened Plant Project work. Not re-found since 1970 in SH52.

Petasites hybridus

Butterbur

Alan mawr

Native

Local status: Scarce

Site	Gridref	Year	Comment	Protection
Egryn Abbey	SH594201	2013		
Dolgellau, N of	SH71J	2011		SSSI, SAC
Ty Du	SH83S	2011		
Afon Lliw	SH849311	2000		
Crogen	SJ03D	1999		SSSI, SAC
Llandrillo	SJ03I	2004		SSSI, SAC
VC48 Merionethshire	SJ04	1999		
Pandy Capel	SJ05V	2007		
Glyndyfrdwy	SJ14L	2004		SSSI, SAC

Commoner in the east and locally often abundant. Not refound in SH93.

Pilularia globulifera

Pillwort

Pelenllys gronynnog

Native

Local status: Extinct

National status: Near threatened

Welsh Status: Section 42

Recorded from Llyn Gwernan [SH71] and Cors y Sarnau [SH93], in the 19th c. but not since. [Jones, 1989].

Plantago media

Hoary Plantain

Llyriad llwyd

Native

Local status: Rare

Site	Gridref	Year	Comment	Protection
National Park Offices, Penrhyndeudraeth	SH604386	1994	Cofnod	
between Arthog and Penmaenpool	SH61	2006		

SH6038 is an artificial site and the record must be regarded with suspicion.

Platanthera bifolia

Lesser butterfly-orchid

Tegeirian llydanwyrdd bach

Native

Local status: Scarce

National status: Vulnerable

Welsh Status: Section 42

Site	Gridref	Year	Comment	Protection
Morfa Harlech	SH562345	2012		SSSI, SAC, NNR
Llanbedr Airfield	SH566249	2013		SSSI
Pont Croesor SSSI & Annexe	SH593416+	1993	Cofnod	SSSI
Llwyn-iarth	SH708174	2010		SSSI
Tir Stent	SH757169	1986	Cofnod	SSSI, SAC
Afon Babi	SH765226	1993	Cofnod	
VC48 Merionethshire	SH84	1999		
Cefn Rofft	SJ0049	2013		SSSI

Treated as rather scarce until some of these records are updated. Apparently gone from SH61, SH62, SH74 and SH82.

Poa alpina

Alpine meadow-grass

Gweunwellt y mynydd

Native

Local status: Extinct

Welsh Status: Endangered

A single 1871 record from SH82. Not subsequently refound.

Poa compressa

Flattened meadow-grass

Gweunwellt cywasgedig

Native

Local status: Scarce

Site	Gridref	Year	Comment	Protection
VC48 Merionethshire	SH50	1999		
VC48 Merionethshire	SH70	1986		
Dolgellau, opposite Llechwedd	SH723181	2005		

Probably rare. Only one recent record, but quite possibly overlooked. Previously recorded in SH52, SH53, SH60, SH61 and SH74.

Poa palustris

Swamp meadow-grass

Gweunwellt y gors

Neophyte

Local status: Rare

Site	Gridref	Year	Comment	Protection
Traeth Glaslyn	SH5838	1994		SSSI, SAC
Llyn Tegid, NE end	SH83	1999		SSSI, SAC, Ramsar
Bala Lake, N end	SH928352	2005		SSSI, SAC, Ramsar

Recorded as an alien introduction.

Polygala vulgaris subsp. collina

Common milkwort

Amlaethai cyffredin

Native

Local status: Rare

National status: Waiting list

Site	Gridref	Year	Comment	Protection
VC48 Merionethshire	SH52	1986		

Two unlocated hectad records only [incl. SH53], but many records in the dunes have not been determined to subspecies so it may have been overlooked.

Polygonum oxyspermum

Ray's knotgrass

Canclwm Ray

Native

Local status: Scarce

Site	Gridref	Year	Comment	Protection
Tonfanau	SH50R	2009		SSSI, SAC
R Ysgethin, mouth of	SH52	1973		
VC48 Merionethshire	SH53	1971		
Llanaber-Talybont	SH590198	1991		
Fairbourne Spit	SH6114	2004		SSSI, SAC
VC48 Merionethshire	SN69	1972		

Most records rather old, but it is "unpredictable in its appearance" [Chater, 2010].

Polypodium cambricum

Southern polypody

Llawredynen Gymreig

Native

Local status: Rare

Site	Gridref	Year	Comment	Protection
VC48 Merionethshire	SH72	1999		

Possibly extant, although no updates from here or the other recorded site at Carreg y Fran SH7344 [1966].

Polystichum lonchitis

Holly fern

Rhedynen gelyn

Native

Local status: Dubious

National status: Vulnerable

Welsh Status: Section 42

A single very old [1924] and unconfirmed record, from SH74. Not in VCCC.

Polystichum x bicknelli = P aculeatum x setiferum

Hybrid shield-fern

Gwrychredynen groesryw

Native hybrid

Local status: Rare

Site	Gridref	Year	Comment	Protection
VC48 Merionethshire	SH63	1977		

"it is often overlooked as one of its parents." [Preston *et al.*, 2000].

Populus nigra* subsp. *betulifolia

Black-poplar

Poplysen Ddu

Native

Local status: Scarce

Site	Gridref	Year	Comment	Protection
Tal-y-Bont, nr Afon Dysynni	SH596039	1994		
Fairbourne	SH616129	2013		
Llandrillo	SJ035367	2009		
Hendwr, Llandrillo	SJ0395038360	1998	Cofnod	
Crogen	SJ03D	1999		SSSI, SAC

Probably all originally planted.

Potamogeton alpinus

Red pondweed

Dyfrllys coch

Native

Local status: Rare

Welsh Status: Critically endangered

Site	Gridref	Year	Comment	Protection
Tal y Llyn S	SH70	1982		
Llyn Gwernan	SH71	2012		
Tal y Llyn Lake, NE end	SH71	1982		

Potamogeton berchtoldii

Small pondweed

Dyfrllys bach

Native

Local status: Scarce

Site	Gridref	Year	Comment	Protection
Morfa Dyffryn, southern of two pools, N end of	SH557261	1998		SSSI, SAC
Morfa Dyffryn	SH569231	2009		SSSI
Ynys Fawr	SH5942	2012		SSSI, SAC
VC48 Merionethshire	SH61	1986		
Llyn Cwm Bychan	SH638311	1997		SSSI, SAC
Llyn Cwm-mynach	SH678238	1988		
Tal y Llyn	SH717100	1972		SSSI
Llyn Tegid	SH889313	2009		SSSI, SAC, Ramsar
Llyn Tegid	SH9235	2007		SSSI, SAC, Ramsar

Older records from SH51, SH53, and SH70.

Potamogeton crispus

Curled pondweed

Dyfrllys crych

Native

Local status: Rare

Site	Gridref	Year	Comment	Protection
Llyn Oror	SJ091472	2014		

First Vice-county record - Herb. SES. Not yet confirmed.

Potamogeton pectinatus

Fennel pondweed

Dyfrllys blaenllym

Native

Local status: Rare

Site	Gridref	Year	Comment	Protection
Morfa Harlech	SH574321	1998		SSSI, SAC

Very rare; historic records from SH50 and SH52.

Potamogeton perfoliatus

Perfoliate pondweed

Dyfrllys trydwll

Native

Local status: Rare

Site	Gridref	Year	Comment	Protection
Llynnau Cregennen	SH61	2012		
Tal y Llyn	SH717100	1972		SSSI

Older records from SH50 and SH70.

Potamogeton praelongus

Long-stalked pondweed

Dyfrllys hirgoes

Native

Local status: Rare

National status: Near threatened

Welsh Status: Critically endangered

Site	Gridref	Year	Comment	Protection
Llynnau Cregennen	SH61	2012		

The first and only record in the Vice-county.

Potamogeton pusillus

Lesser pondweed

Dyfrllys eiddil

Native

Local status: Rare

Site	Gridref	Year	Comment	Protection
Morfa Harlech	SH574321	1998		SSSI, SAC
Lasynys	SH5933	1971		
Llanfrothen, nr Bwlch-glas	SH597400	1962		

Older records from SH50 and SH54. Not refound on a return visit to SH54 in 2012.

Potentilla x suberecta = P anglica x erecta

Hybrid cinquefoil

Pumnalen groesryw

Native hybrid

Local status: Scarce

Site	Gridref	Year	Comment	Protection
VC48 Merionethshire	SH50	1999		
Coed Pennyglannau	SH6739	2012		
VC48 Merionethshire	SH93	1999		
VC48 Merionethshire	SJ04J	1987		

Described as "Frequent, with parents" [Benoit & Richards, 1963]. Now scarce but probably under-recorded. Older records from SH52, SH61, SH62, SH71 and SH82.

Primula veris

Cowslip

Briallen Fair

Uncertain

Local status: Scarce

Site	Gridref	Year	Comment	Protection
Llanegryn Church Yard	SH596057	1992	Cofnod	
VC48 Merionethshire	SH61	1999		
Maes y Neuadd, Talsarnau	SH617346	2000	Cofnod	
Plas Tan y Bwlch, Maentwrog	SH65624054	1998	Cofnod	SSSI, SAC
Glan Dulas	SH70L	2010		
Wenallt	SH82B	2009		SSSI, SAC, NNR

Widely planted in "mitigation". Not easy to determine which if any records are native. Not recently recorded in SH62 or SH71.

Pseudorchis albida

Small-white orchid

Tegeirian bach gwyn

Native

Local status: Rare

National status: Vulnerable

Welsh Status: Critically endangered, Section 42

Castell Prysor	SH73N	2009		SSSI
Tir Stent	SH7516	1986	Cofnod	SSSI, SAC

Very rare. No recent records in spite of its sites being protected. Older records from SH82 and SH93. Not re-found at Castell Prysor in 2014.

Puccinellia distans

Reflexed salt-marsh-grass

Gwellt-y-morfa atblygedig

Native

Local status: Rare

Site	Gridref	Year	Comment	Protection
VC48 Merionethshire	SH61	1991		
Llandderfel, Shotton Woods	SH93X	2011		SSSI, SAC
Cwm Sian Llwyd	SJ00133349	2011		
Llangar	SJ04R	2008		SSSI, SAC

Rare, but apparently spreading with road-salting. All recent records are inland.

Pulicaria dysenterica

Common fleabane

Cedowydd

Native

Local status: Scarce

Site	Gridref	Year	Comment	Protection
VC48 Merionethshire	SH50	1970		
VC48 Merionethshire	SH52	1986		
Morfa Harlech	SH562345	2012		SSSI, SAC, NNR
Hafod y Llyn	SH598293	2007	Cofnod	
VC48 Merionethshire	SH61	1986		
VC48 Merionethshire	SH63	1972		
Arenig Quarry	SH831393	2006		SSSI, SAC

Scarce. Old records from SN59 and SN69.

Pyrola rotundifolia subsp. maritima

Wintergreen

Glesyn-y-gaeaf deilgrwn

Native

Local status: Rare

Site	Gridref	Year	Comment	Protection
Shell Island	SH52N	2010		SSSI, SAC, NNR
Morfa Dyffryn	SH556248	1981		SSSI, SAC, NNR
Morfa Harlech	SH572313	1992		SSSI, SAC

Rare, in only two sites. but locally frequent there.

Radiola linoides

Allseed

Llin gorhadog

Native

Local status: Scarce

National status: Near threatened

Site	Gridref	Year	Comment	Protection
VC48 Merionethshire	SH52	1986		
VC48 Merionethshire	SH53	1999		
VC48 Merionethshire	SH61	1999		
VC48 Merionethshire	SH63	1972		
VC48 Merionethshire	SN59	1999		

Scarce with no post-1970 records from SH50, but this elusive plant is probably overlooked and under-recorded in its core sites.

Ranunculus aquatilis

Common water-crowfoot

Crafanc-y-frân y dŵr

Native

Local status: Rare

Site	Gridref	Year	Comment	Protection
Hafod y Llyn	SH5929	2013		
VC48 Merionethshire	SH70	1973		
VC48 Merionethshire	SH70	1999		
Llyn Tegid	SH9235	1996		SSSI, SAC, Ramsar
East of Carrog	SJ14G	2004		SSSI, SAC
VC48 Merionethshire	SN59	1999		

Uncertain taxonomy makes it difficult to determine its earlier distribution as older records [SH53, SH53, SH60, SH64, SH71, SH72, SH83 and SN69] may include *R. peltatus* and *R. penicillatus*.

Ranunculus auricomus

Goldilocks buttercup

Blodyn-y-menyn peneuraid

Native

Local status: Rare

Site	Gridref	Year	Comment	Protection
Hafod-y-calch	SJ0542	2012		SSSI, SAC

PMB [2002]: "a few plants again....its only Merioneth station" [Welsh Bulletin: WPR, 75, Winter 2004/2005].

Ranunculus baudotii

Brackish water-crowfoot

Crafanc-y-frân y morfa

Native

Local status: Rare

Site	Gridref	Year	Comment	Protection
Arthog	SH61	1991		
Aberdyfi	SN5997	2012		SSSI, SAC

Wanting well-identified records. An older site in SH50.

Ranunculus lingua

Greater spearwort

Llafnlys mawr

Native

Local status: Rare

Site	Gridref	Year	Comment	Protection
Arthog Bog	SH61G	2007		SSSI, SAC

A single site on RSPB reserve. Probably originally planted but established here at least since 1902.

Ranunculus peltatus

Pond water-crowfoot

Crafanc-y-frân y llyn

Native

Local status: Scarce

Site	Gridref	Year	Comment	Protection
VC48 Merionethshire	SH53	1999		
Hafod y Llyn	SH597294	2013		
Nant Filtir-gerrig	SH829393	1999		SSSI, SAC
R Dee, 5km lengths above+below	SH949367	1979		SSSI, SAC
R Dee, 5km lengths above+below	SJ021375	1979		SSSI, SAC
Crogen	SJ03D	1999		SSSI, SAC
R Dee, 5km lengths above+below	SJ069433	1979		SSSI, SAC
R Dee, 5km lengths above+below	SJ114436	1979		SSSI, SAC
Tywyn (south of)	SN590981	2009		SSSI, SAC

Previously recorded from SH50 and SH64.

Ranunculus penicillatus

Stream water-crowfoot

Crafanc-y-frân y nant

Native

Local status: Rare

Site	Gridref	Year	Comment	Protection
Nant y Mynach	SH6404	2013		
Cadair Idris	SH7211	2008	Cofnod	SSSI, SAC, NNR

Taxonomic difficulties make it hard to assess this taxon's frequency.

Ranunculus sceleratus

Celery-leaved buttercup

Crafanc yr eryr

Native

Local status: Scarce

Site	Gridref	Year	Comment	Protection
VC48 Merionethshire	SH50	1999		
Ynys	SH598347	2004		
VC48 Merionethshire	SH61	1999		
VC48 Merionethshire	SH63	1971		
Morfa Mawddach Old Railway Track	SH7018	1994	Cofnod	SSSI, SAC
VC48 Merionethshire	SH71	1999		
Towyn	SN582998	1974		

Lacking modern records from SH51, SH60 and SH71.

Ranunculus trichophyllus

Thread-leaved water-crowfoot

Crafanc-y-frân feinddail

Native

Local status: Rare

Site	Gridref	Year	Comment	Protection
Morfa Harlech	SH565336	1998		SSSI, SAC
Morfa Harlech, c 1400m WSW of Glan-y-mor	SH566341	1998	Cofnod	SSSI, SAC
Harlech Forest	SH571326	2003		SSSI, SAC
VC48 Merionethshire	SN59	1999		

Rare; sites on Morfa Harlech and in the Aberdyfi dunes.

Raphanus raphanistrum subsp. maritimus

Sea radish

Rhuddygl arfor

Native

Local status: Rare

Site	Gridref	Year	Comment	Protection
near the mouth of Afon Dysynni	SH5603	2002		SSSI, SAC
Bennar	SH5722	2002		SSSI, SAC

"A rare and usually fugitive plant" [Chater, 2010].

Reseda luteola

Dyer's rocket

Melengu

Archaeophyte

Local status: Scarce

Site	Gridref	Year	Comment	Protection
VC48 Merionethshire	SH52	1986		
VC48 Merionethshire	SH61	1986		
Morfa Mawddach Old Railway Track	SH6314	1994	Cofnod	SSSI, SAC
Morfa Mawddach Old Railway Track	SH7118	1994	Cofnod	SSSI, SAC
Mynydd Rhyd ddu	SJ04N	2013		
Corwen	SJ0542	2002		SSSI, SAC

Pre-1970 records from SH53, SH72, SN59 and SN69.

Rhamnus cathartica

Buckthorn

Rhafnwydden

Native

Local status: Dubious

No records: not in VCCC.

Rhinanthus minor subsp. stenophyllus

Yellow rattle

Cribell felen

Native

Local status: Dubious

National status: Waiting list

Welsh Status: Waiting list

No records but listed in VCCC. Probably under-recorded. "The ssp. may be better abandoned" [Stace, 2010].

Rhynchospora fusca

Brown beak-sedge

Corsfrwynen losg

Native

Local status: Rare

Welsh Status: Vulnerable

Site	Gridref	Year	Comment	Protection
Arthog Bog	SH636147	1977		SSSI, SAC

Only ever recorded at this site in VC48, but not recently.

Rorippa islandica

Northern yellow-cress

Berwr melyn gogleddol

Native

Local status: Rare

Site	Gridref	Year	Comment	Protection
Afon Glaslyn	SH5947	2005		SSSI, SAC
Llyn Tegid	SH8931+	1979		SSSI, SAC, Ramsar

Chater [2010] suggests that seeds may be carried by the feet of geese - certainly plausible in the case of the Glaslyn Marshes.

Rorippa palustris

Marsh yellow cress

Berwr melyn y gors

Native

Local status: Scarce

Site	Gridref	Year	Comment	Protection
VC48 Merionethshire	SH73	1986		
Llyn Tegid	SH8831	1988		SSSI, SAC, Ramsar
Llyn Tegid	SH889309	1979		SSSI, SAC, Ramsar
Llyn Tegid	SH890314	1979		SSSI, SAC, Ramsar
Bala Lake, N end	SH9235	1984		SSSI, SAC, Ramsar
VC48 Merionethshire	SH93	1999		
R Dee	SJ021375	1979		SSSI, SAC
Crogen	SJ03D	1999		SSSI, SAC
VC48 Merionethshire	SJ04	1987		
R Dee	SJ069433	1979		SSSI, SAC

Locally frequent along the Dee near Corwen. Older record from SH53.

Rorippa sylvestris

Creeping yellow-cress

Berwr melyn ymlusgol

Native

Local status: Scarce

Site	Gridref	Year	Comment	Protection
Hafod y Calch	SJ04L	2003		SSSI, SAC
Ty'n-y-cefn	SJ04L	2011		SSSI, SAC
Llangar	SJ04R	2005		SSSI, SAC
Corwen	SJ0843	1987		SSSI, SAC

Locally frequent over a small area along the Dee near Corwen; an old record from Glyndyfrdwy, SJ14 [1959].

Rosa caesia* subsp. *caesia

Hairy dog-rose

Rhosyn rhuddlas

Native

Local status: Rare

Site	Gridref	Year	Comment	Protection
Garth Goch, N side	SH952362	1988		
Glyndyfrdwy	SJ14	1976		

Rare but perhaps under-recorded.

Rosa caesia* subsp. *vosagiaca

Glaucous dog-rose

Rhosyn llwydyrdd

Native

Local status: Scarce

Site	Gridref	Year	Comment	Protection
VC48 Merionethshire	SH93	1980		
Hendre	SH974413	1978		
VC48 Merionethshire	SJ0142	1971		
Bryn-celyn, Melin-y-Wig	SJ04J	1987		
Corwen, E of Rhaggatt Hall	SJ04W	1987		SSSI, SAC

Scarce but under-recorded.

Rosa micrantha

Small-flowered sweet-briar

Drysien bêr fân-flodeuog

Native

Local status: Scarce

Site	Gridref	Year	Comment	Protection
VC48 Merionethshire	SH53	1999		
Morfa Mawddach Old Railway Track	SH624148	1994	Cofnod	SSSI, SAC
Morfa Mawddach Old Railway Track	SH6314	1994	Cofnod	SSSI, SAC
Morfa Mawddach Old Railway Track	SH6617	1994	Cofnod	SSSI, SAC
Cae-clyd, 22km W of	SH728191	1987		

Also an older record from Ganllwyd SH72, before 1941.

Rosa mollis

Soft downy-rose

Rhosyn blewog

Native

Local status: Scarce

Site	Gridref	Year	Comment	Protection
Dyffrydan, Islwrdef	SH692151	1992		
Trawsfynydd, S of	SH699348	1979		SSSI, SAC
VC48 Merionethshire	SH71	1992		
Graig Ty-nant, Pennant Dyfi	SH896219	2002		

Old records from Cwm Gau Graig SH7414 [-1942] and Fairbourne SH61 [1963].

Rosa tomentosa

Harsh downy-rose

Rhosyn gwlanog

Native

Local status: Scarce

Site	Gridref	Year	Comment	Protection
Morfa Harlech	SH580336	1979		SSSI, SAC
Traeth Bach, S side	SH584354	1978		
Llanfihangel-y-traethau	SH596355	1979		
VC48 Merionethshire	SH61	1999		
Tan yr Allt, E side of A496	SH626382	1977		
VC48 Merionethshire	SH72	1971		

Old records from Brithdir [SH71] and Ganllwyd [SH72]. "...probably under-recorded. It can be difficult to identify..." [Preston et al 2000].

Rosa x dumalis = R caesia x canina

Hybrid rose

Rhosyn croesryw

Native hybrid

Local status: Rare

Site	Gridref	Year	Comment	Protection
VC48 Merionethshire	SH63	1980		
VC48 Merionethshire; VC47 Montgomeryshire	SH81	1999		
Dinmael	SJ08654535	2002		

Also a very old [1886] record from SJ14, Glydyfrdwy [W.M.Rogers].

Rosa x rothschildii = R canina x sherardii

Hybrid rose

Rhosyn croesryw

Native hybrid

Local status: Rare

Site	Gridref	Year	Comment	Protection
Llanfihangel-y-traethau, W of Cefn Gwyn Farm	SH591354	1979		

Also a very old [1871] record from Bala [SH93]. Herb. MANCH.

Rosa x scabriuscula = R canina x tomentosa

Hybrid rose

Rhosyn croesryw

Native hybrid

Local status: Rare

Site	Gridref	Year	Comment	Protection
VC48 Merionethshire	SH53	1980		
Cwm-tir-mynach	SH909431	1980		
VC48 Merionethshire	SJ003413	1979		

Pre-1986 records with vouchers in Herb. NMW and Herb. SUN. Also an 1871 record from SH93.

Rubia peregrina

Wild madder

Cochwraidd gwyllt

Native

Local status: Rare

Site	Gridref	Year	Comment	Protection
VC48 Merionethshire	SH53	1999		
VC48 Merionethshire	SH61	1999		

Rare; not seen recently. Older records from SH63, SH64 and SN69.

Rubus chamaemorus

Cloudberry

Llwyn mwyar y Berwyn

Native

Local status: Scarce

Welsh Status: Near Threatened

Site	Gridref	Year	Comment	Protection
Milltir Gerrig	SJ03F	2002		SSSI, SAC, NNR
Moel Sych	SJ052314+	2010		SSSI, SAC, NNR
Cadair Berwyn	SJ061331	2011		SSSI, SAC, NNR
Moel Sych	SJ067327+	2011		SSSI, SAC, NNR
Cadair Bronwen	SJ075343	2011		SSSI, SAC, NNR

Locally abundant in many parts of the Berwyn Mountains SJ03. Not reliably recorded elsewhere.

Rubus saxatilis

Stone bramble

Corfiaren

Native

Local status: Scarce

Site	Gridref	Year	Comment	Protection
VC48 Merionethshire	SH63	1972		
Glyn Arran, Dolgellau	SH730171	1996	Cofnod	SSSI, SAC
VC48 Merionethshire	SH74	1999		
VC48 Merionethshire	SH81	1999		
Craig Ty-nant	SH82V	1995		SSSI

Probably now rare. Some older records from SH50, SH72, SH92 and SH93.

Rumex crispus subsp. littoreus

A curled dock

Tafolen grech y morfa

Native

Local status: Scarce

Site	Gridref	Year	Comment	Protection
VC48 Merionethshire	SH50	2012		
Llwyngwriil N	SH51V	2012		SSSI, SAC
Traeth Glaslyn RSPB reserve	SH53Z	2013		SSSI, SAC
Dalar, Afon Ysgethin	SH5721	2013		SSSI, SAC
Fairbourne Spit	SH6114	2012		SSSI, SAC
Farchynys S	SH6617	2012		SSSI, SAC
Afon Mawddach at Penmaenpool	SH6918	2013		SSSI, SAC

Although scarce it has been found in most coastal sites surveyed and may be still under-recorded.

Rumex hydrolapathum

Water dock

Tafolen y dŵr

Native

Local status: Scarce

Site	Gridref	Year	Comment	Protection
VC48 Merionethshire	SH51	1999		
Afon Ysgethin	SH5721	2002		SSSI, SAC
Glaslyn Marshes (Compartment 9)	SH592386	1983	Cofnod [site centroid]	
Morfa Mawddach Car Park and Toilets	SH628143	1995	Cofnod	SSSI, SAC
VC48 Merionethshire	SN59	1999		

Also an old record from SN69.

Rumex x pratensis = R crispus x obtusifolius

Hybrid dock

Tafolen groesryw

Native

Local status: Scarce

Site	Gridref	Year	Comment	Protection
Arthog	SH6314	1997		SSSI, SAC
Nant-y-Gwyrddail	SH6714	2012		SSSI, SAC
Dolgellau	SH7813	1997		
Nant Ryd-wen	SH9130	2012		
Ty'n y Fron	SH93Z	2009		SSSI
Betws Gwerfil Goch	SJ04I	2008		
Caer Drewyn	SJ04X	2009		SSSI, SAC
Carrog North	SJ14C	2008		

Although apparently scarce it is almost certainly under-recorded. Older records from SH52 and SH53.

Ruppia cirrhosa

Spiral tasselweed

Tusw troellog

Native

Local status: Rare

National status: Near threatened

Welsh Status: Vulnerable

Site	Gridref	Year	Comment	Protection
Talsarnau	SH63	1971		

This is the sole record [herb BM]. An early record [1898] from SH52 is treated as dubious.

Ruppia maritima

Beaked tasselweed

Tusw arfor

Native

Local status: Scarce

Welsh Status: Endangered

Site	Gridref	Year	Comment	Protection
VC48 Merionethshire	SH52	1999		
Morfa Harlech	SH53	1970		SSSI, SAC
Broadwater SSSI	SH584021	2009		
Pont Brewit	SH616385	2011		SSSI, SAC
Morfa Mawddach to Penmaenpool	SH6718	1994	Cofnod	SSSI, SAC
Penmaenpool, E of	SH696186	2012		SSSI, SAC
VC48 Merionethshire	SH71	1988		

Sagina maritima

Sea pearlwort

Corwlyddyn arfor

Native

Local status: Scarce

Site	Gridref	Year	Comment	Protection
VC48 Merionethshire	SH50	1999		
VC48 Merionethshire	SH51	1999		
Ynys	SH53X	2011		SSSI, SAC, NNR
VC48 Merionethshire	SH61	1999		
VC48 Merionethshire	SH63	1986		

Scarce; more work needed. Perhaps overlooked. Old records from SH52.

Sagina subulata

Heath pearlwort

Corwlyddyn mynawydaidd

Native

Local status: Rare

Site	Gridref	Year	Comment	Protection
VC48 Merionethshire	SH61	1999		
VC48 Merionethshire	SH63	1986		
VC48 Merionethshire	SH93	1986		

No recent records.

Salicornia dolichostachya

Long-stalked glasswort

Llyrllys canghennog

Native

Local status: Scarce

No post-1970 records for this taxon but previously recorded in SH52, SH53, SH61 and SH62 and it was described by Benoit & Richards [1963] as "Abundant on soft wet estuary mud." Clearly more work needed on the genus.

Salicornia emerici

Shiny glasswort

Llyrllys gloyw

Native

Local status: Rare

National status: Data deficient

Welsh Status: Endangered

A single pre-1970 record for this very rare species [SH61].

Salicornia europaea

Common glasswort

Llyrllys cyffredin

Native

Local status: Rare

Site	Gridref	Year	Comment	Protection
Llangelynin, Towyn	SH50	1970		
VC48 Merionethshire	SH52	1999		
VC48 Merionethshire	SH53	1999		
VC48 Merionethshire	SH61	1999		

"in the past it has been confused with *S. ramosissima*". [Preston *et al.*, 2000] See comment above.***Salicornia fragilis***

Yellow glasswort

Llyrllys melyn

Native

Local status: Rare

See comment under *S. dolichostachys*. A single pre-1970 record [SH61].***Salicornia nitens* see *S. emerici******Salicornia ramosissima***

Purple glasswort

Llyrllys porffor

Native

Local status: Scarce

Site	Gridref	Year	Comment	Protection
Llechollwyn, Ynys	SH596357	1996	Cofnod	

See comment above. Pre -1970 records from SH50, SH52 and SH61.

Salix herbacea

Dwarf willow

Helygen fach

Native

Local status: Rare

Welsh Status: Near Threatened

Site	Gridref	Year	Comment	Protection
Cadair Idris	SH7213	2012		SSSI, SAC, NNR
VC48 Merionethshire	SH84	1974		

Recorded on Cader Idris in 2012 with photos. Not refound when searching on Aran Mawddwy [SH8622] in 2004.

Salix pentandra

Bay Willow

Helygen bêr

Uncertain

Local status: Rare

Welsh Status: Waiting list

Site	Gridref	Year	Comment	Protection
VC48 Merionethshire	SH53	1986		
VC48 Merionethshire	SH72	1999		
Bala Lake, N end	SH9235	1984		SSSI, SAC, Ramsar
Cors y Sarnau	SH97413921	2009		SSSI

Possibly all originally planted. A pre-1970 record from SH81 has not been re-found.

Salix purpurea

Purple Willow

Helygen gochlas

Uncertain

Local status: Scarce

Site	Gridref	Year	Comment	Protection
VC48 Merionethshire	SH51	1999		
Cors y Sarnau	SH972390	1989		SSSI
Corwen	SJ0843	1987		SSSI, SAC

3 hectads but not recently recorded; perhaps planted.

Salix x ambigua = S aurita x repens

Hybrid willow

Helygen groesryw

Native hybrid

Local status: Rare

Site	Gridref	Year	Comment	Protection
VC48 Merionethshire	SH52	1986		
Tir Stent	SH71	2003		SSSI, SAC

Salix x capreola = S aurita x caprea

Hybrid willow

Helygen groesryw

Native hybrid

Local status: Rare

Site	Gridref	Year	Comment	Protection
VC48 Merionethshire	SH83	1999		

Salix x forbyana = S cinerea x purpurea x viminalis

Fine osier

Helygen wiail fain

Native hybrid

Local status: Rare

Site	Gridref	Year	Comment	Protection
VC48 Merionethshire	SN714996	1973		

A single record, confirmed by D Meikle. Herb. NMW.

Salix x smithiana = S cinerea x viminalis

Broad-leaved osier

Helygen dail sidan

Native hybrid

Local status: Dubious

No records, but in VCCC. An early [1930 - 1969] record in SN69 is not located to Vice-county.

Salsola kali subsp. kali

Prickly saltwort

Helys pigog

Native

Local status: Scarce

National status: Vulnerable

Welsh Status: Section 42

Site	Gridref	Year	Comment	Protection
VC48 Merionethshire	SH51	1999		
VC48 Merionethshire	SH52	1999		
Harlech West	SH53Q	2007		SSSI, SAC, NNR
VC48 Merionethshire	SH61	1999		
VC48 Merionethshire	SH63	1999		

"Frequent on dry sandy shores" [Benoit & Richards, 1963] but lacking recent records.

Sambucus ebulus

Danewort

gwaed y gwŷr

Archeophyte

Local status: Rare

Site	Gridref	Year	Comment	Protection
VC48 Merionethshire	SH61	1986		
Llandderfel	SH9837	2012		SSSI, SAC
Coed y Fron	SJ04M	2009		

Infrequent on roadsides.

Sanguisorba officinalis

Great burnet

Bwrned mawr

Native

Local status: Rare

Site	Gridref	Year	Comment	Protection
Tabor	SH753173	2009		SSSI, SAC
Caerynwch estate	SH7617	2013		SSSI, SAC
Braich y Ceunant	SH7618	2012		SSSI, SAC
Brithdir	SH77011830	2013		
Bodwenni	SH962358	1983		

Apparently spreading in the Brithdir area. The SH93 site has not been recently updated [Herb. NMW].

Sarcocornia perennis

Perennial glasswort

Llyrllys parhaol

Native

Local status: Rare

Welsh Status: Vulnerable

Site	Gridref	Year	Comment	Protection
Mochras	SH52	1999		SSSI, SAC, NNR
Arthog	SH61	1991		
Friog S	SH6113	2011		SSSI, SAC

May not be rare; unlocated records in SH61 do not give an indication of the number of sites.

Saussurea alpina

Alpine saw-wort

Lliflys y mynydd

Native

Local status: Rare

Welsh Status: Endangered

Site	Gridref	Year	Comment	Protection
Cwm Aran	SH71	1999		

Recorded here since 1987 but not recently refound in this, its most southerly UK site.

Saxifraga granulata

Meadow saxifrage

Tormaen y gweunydd

Native

Local status: Rare

Site	Gridref	Year	Comment	Protection
Byrgoed	SH994371	2013		SSSI, SAC
Hafod y Calch	SJ04L	2003		SSSI, SAC
Ty'n-y-cefn	SJ04L	2011		SSSI, SAC
Llangar	SJ066427	2005		

These records are all from alongside the River Dee, where the plant is locally frequent.

Saxifraga oppositifolia

Purple saxifrage

Tormaen porffor

Native

Local status: Rare

Site	Gridref	Year	Comment	Protection
Llyn y Gafr pillow lavas	SH71B	2013		SSSI, SAC, NNR
VC48 Merionethshire	SH81	1999		

Historically found on volcanic rocks in three hectads but perhaps only extant in SH71. Not refound in SH82 since 1970.

Scandix pecten-veneris

Shepherd's needle

Nodwydd y bugail

Archaeophyte

Local status: Extinct

National status: Critically endangered

Welsh Status: Critically endangered, Section 42

A single historical record from SH52.

Schedonorus giganteus x Lolium perenne = Hybrid grass Gwellt croesyw
X Schedolium brinkmannii

Native hybrid

Local status: Rare

Site	Gridref	Year	Comment	Protection
VC48 Merionethshire	SN79	1973		

A single record [PMB 1973] confirmed by C E Hubbard; Herb. NMW.

Schoenus nigricans Black bog-rush Corsfrwynen ddu

Native

Local status: Rare

Site	Gridref	Year	Comment	Protection
VC48 Merionethshire	SN69	1993		

A single record: Herb. NMW.

Scilla verna Spring squill Seren y gwanwyn

Native

Local status: Rare

Site	Gridref	Year	Comment	Protection
VC48 Merionethshire	SH53	1999		
VC48 Merionethshire	SH61	1999		
VC48 Merionethshire	SH63	1986		

No recent records.

Scleranthus annuus Annual knawel Dinodd unflwydd

Native

Local status: Rare

National status: Endangered

Welsh Status: Section 42

Site	Gridref	Year	Comment	Protection
Harlech	SH53	2004		

The only post-1970 record. Earlier ones from SH52, SH61, SH63, SH82 and SN69.

Scrophularia auriculata Water figwort Gwrnerth y dŵr

Native

Local status: Rare

Site	Gridref	Year	Comment	Protection
Llwyngwriil North	SH51V	2012		SSSI, SAC
VC48 Merionethshire	SH5938	1994		SSSI, SAC
Llyn Oerfel	SH7038	2011		SSSI, SAC

Older records from SH71, SJ14 and SN69.

Senecio erucifolius

Hoary ragwort

Creulys lwyd

Native

Local status: Rare

Site	Gridref	Year	Comment	Protection
Llyn Trawsfynydd	SH7037	1994		

Never otherwise recorded.

Sherardia arvensis

Field madder

Mandon las yr yd

Native

Local status: Scarce

Site	Gridref	Year	Comment	Protection
VC48 Merionethshire	SH50	1986		
VC48 Merionethshire	SH51	1999		
Llanbedr Airfield	SH5625	2013		SSSI, SAC, NNR
VC48 Merionethshire	SJ03	1971		
Hengair Uchaf	SJ04A	2004		
Carrog North	SJ14C	2008		

Lost from SH53, SH60, SH61, SH71, SH82 and SH83 since before 1970.

Silene acaulis

Moss campion

Gludlys mwsoglog

Native

Local status: Dubious

Welsh Status: Vulnerable

VC48 Merionethshire	SH63	1994		
Moelwyn Mawr	SH656459	1980		
Cwm Aran	SH7313	1987		SSSI, SAC

Recent attempts to update the Cwm Aran record have failed. Old records exist from three other hectads as far back as 1863. Perhaps now extinct.

Silene gallica

Small-flowered catchfly

Gludlys amryliw

Archaeophyte

Local status: Extinct

National status: Endangered

Welsh Status: Vulnerable, Section 42

First recorded in Barmouth 1873: last recorded there in 1969.

Silene latifolia

White campion

Gludlys gwyn

Archaeophyte

Local status: Scarce

Site	Gridref	Year	Comment	Protection
VC48 Merionethshire	SH50	1999		
Glaslyn Marshes (Compartment 9)	SH592386 [centroid]	1983	Cofnod [site centroid]	
VC48 Merionethshire	SH61	1999		
Corwen	SJ04R	2005		SSSI, SAC
East of Carrog	SJ14G	2012		SSSI, SAC
Glyndyfrdwy, Pen y Garth	SJ14R	2004		SSSI, SAC

Also pre-1970 records in SH52, SH60, SH62, SH71, SH93 and SN69. Currently more common in the east of the county.

Silene noctiflora

Night-flowering catchfly

Gludlys nos-flodeuol

Archaeophyte

Local status: Extinct

National status: Vulnerable

Welsh Status: Endangered

Casual, only recorded by Ruddy in Llandderfel [SH93] in 1919.

Silene uniflora

Sea campion

Gludlys arfor

Native

Local status: Scarce

Site	Gridref	Year	Comment	Protection
Tonfanau	SH50R	2012		SSSI, SAC
Llwyngwriil	SH51V	2012		SSSI, SAC
VC48 Merionethshire	SH53	1999		
Aber Dysynni	SH582027	1989	Cofnod	SSSI
Gallt Ffynnon yr Hydd	SH61A	2012		SSSI, SAC
Fairbourne Spit	SH61C	2012	Cofnod	SSSI, SAC
Morfa Mawddach Old Railway Track	SH61M and SH61N	1994	Cofnod	SSSI, SAC
Morfa Mawddach Old Railway Track	SH61Z and SH71E	1994	Cofnod	SSSI, SAC
VC48 Merionethshire	SH63	1986		
North Cliff of Moelwyn Mawr	SH656451	1995	Cofnod	SSSI
Cribin Fawr and Cribin Fach	SH81	2013		

Silene x hampeana = S dioica x latifolia

Hybrid campion

Gludlys croesryw

Local status: Rare

Site	Gridref	Year	Comment	Protection
VC48 Merionethshire	SH72	1999		
Corwen	SJ04R	2005		SSSI, SAC
Ty'n Celyn	SJ1343	2012		SSSI, SAC

Now rare, although there are earlier records from other tetrads [SH52, SH72, SH69].

Smyrnum olusatrum

Alexanders

Dulys

Archaeophyte

Local status: Scarce

Site	Gridref	Year	Comment	Protection
Llanbedr	SH52	2004		
Morfa Dyffryn	SH5526+	2006		SSSI, SAC, NNR
Fairbourne to Morfa Mawddach	SH61	2011		
Barmouth	SH6116	2011		SSSI, SAC
Aberdyfi Golf Course	SN5997	2012		SSSI, SAC

Although scarce it has been re-recorded from its historic sites.

***Sorbus aria* agg.**

Common whitebeam

Cerddinen wen

Native

Local status: Rare

Site	Gridref	Year	Comment	Protection
VC48 Merionethshire	SH71	1999		
VC48 Merionethshire	SH72	1999		
VC48 Merionethshire	SJ04	1999		

3 records, probably always planted [Rich, 2010] Older records in SH63 and SH64.

Sorbus torminalis

Wild service-tree

Cerddinen wyllt

Native

Local status: Rare

Site	Gridref	Year	Comment	Protection
Farchynys, Bontddu	SH662184	1997		SSSI, SAC

Sparganium natans

Least bur-reed

Cleddlys bach

Native

Local status: Dubious

VC48 Merionethshire	SH61	1999		
Llanuwchllyn, NW of Garneddwen railway halt	SH82	1970		
Pant Gwyn	SH82	1970		
Pennant-Lliw	SH8629	1970		
Maestron	SH8635	1970		

No modern records. Some older ones may be mis-identifications for *S. angustifolium*.

Spergularia media

Greater sea-spurrey

Troellig arfor mawr

Native

Local status: Scarce

Site	Gridref	Year	Comment	Protection
Mochras	SH52T	2010		SSSI, SAC, NNR
Morfa Harlech NNR	SH53	1974		SSSI, SAC, NNR
VC48 Merionethshire	SH53	1999		
Foel Fendigaid	SH5605	2013		SSSI, SAC
Aber Dysynni	SH582027	1989		SSSI
Fairbourne Spit	SH613144	2011		SSSI, SAC
Fegla Fawr	SH6214	2012		SSSI, SAC
Farchynys S	SH6617	2012		SSSI, SAC

Old record from SH63.

Spergularia rupicola

Rock sea-spurrey

Troellig arfor y clogwyn

Native

Local status: Rare

Site	Gridref	Year	Comment	Protection
VC48 Merionethshire	SH53	1999		
Llwyngwriol South	SH576085	2011		SSSI, SAC
Gwastadgoed	SH598110	2011		SSSI, SAC

Recent records but still rare. Older record from SH61.

Spiranthes spiralis

Autumn lady's-tresses

Troellig yr hydref

Native

Local status: Scarce

National status: Near threatened

Site	Gridref	Year	Comment	Protection
Morfa Dyffryn	SH5525	2007	Cofnod	SSSI, SAC, NNR
Morfa Harlech	SH558341	2004		SSSI, SAC, NNR
Tonfanau	SH563031+	2012		SSSI, SAC
Morfa Dyffryn Car Park and Dunes	SH573224	1983	Cofnod	SSSI, SAC
VC48 Merionethshire	SH61	1999		
Aberdyfi Dunes	SN5996	2011		SSSI, SAC

Scarce, but locally frequent: not recently recorded from SH51 or SN69.

Stachys arvensis

Field woundwort

Briwlys y tir âr

Archaeophyte

Local status: Scarce

National status: Near threatened

Welsh Status: Vulnerable

Site	Gridref	Year	Comment	Protection
VC48 Merionethshire	SH52	1999		
VC48 Merionethshire	SH53	1999		
VC48 Merionethshire	SH61	1999		
VC48 Merionethshire	SH93	1999		
Rhos y Maerdy	SJ03P	2007		SSSI, SAC
River Alwen, Hafod East	SJ0642	2013		SSSI, SAC

Old records from SH50, SH60, SH63, SH70, SH71 and SH82. The decline in arable farming is likely to have contributed to these losses.

Stachys x ambigua = S palustris x sylvatica

Hybrid woundwort

Briwlys croesrys

Native hybrid

Local status: Scarce

Site	Gridref	Year	Comment	Protection
VC48 Merionethshire	SH50	1999		
VC48 Merionethshire	SH51	1999		
Llanbedr	SH52	1981		
Penmaenpool	SH61	1975		
Morfa Mawddach Old Railway Track	SH6918	1994	Cofnod	SSSI, SAC
Llwyn-iarth	SH70171799	2013		
VC48 Merionethshire	SH74	1986		
VC48 Merionethshire	SH81	1999		
Llangower	SH93	1983		
VC48 Merionethshire	SJ04	1999		

Older records from SH60 and SH72.

Stellaria neglecta

Greater chickweed

Gwlyddyn-y-dom mawr

Native

Local status: Scarce

Site	Gridref	Year	Comment	Protection
VC48 Merionethshire	SH50	1986		
VC48 Merionethshire	SH53	1986		
Brwyn-llynau	SH585295	2013		
VC48 Merionethshire	SH60	1986		
VC48 Merionethshire	SH62	1999		
VC48 Merionethshire	SH63	1986		
Morfa Mawddach Old Railway Track	SH6415	1994	Cofnod	SSSI, SAC
VC48 Merionethshire	SJ04	1999		

Older records from SH82 and SH83.

Stellaria nemorum subsp. montana

A wood stitchwort

Serenllys-y-coed Cymreig

Native

Local status: Rare

National status: Data deficient

Welsh Status: Vulnerable

Site	Gridref	Year	Comment	Protection
VC48 Merionethshire	SH63	1999		
Arthog Woods	SH644144	2013		
Coed Cynan	SH763193	2013		

Very rare but possibly still extant in other sites in SH53 and SH63.

Stellaria pallida

Lesser chickweed

Gwlyddyn-y-dom bach

Native

Local status: Scarce

Site	Gridref	Year	Comment	Protection
VC48 Merionethshire	SH50	1999		
Morfa Harlech	SH5632	2013		SSSI, SAC, NNR
Morfa Harlech	SH570319	2013		SSSI, SAC
Morfa Dyffryn Car Park and Dunes	SH573224	1996	Cofnod	SSSI, SAC
VC48 Merionethshire	SH61	1986		
Aberdyfi Golf Course	SN59Y	2012		SSSI, SAC
Aberdyfi	SN59Z	2012		SSSI, SAC

Scarce but occasional in duneland: an older record in SN69.

Subularia aquatica

Awlwort

Mynawydlys

Native

Local status: Scarce

Welsh Status: Endangered

Site	Gridref	Year	Comment	Protection
Llyn Eiddew-bach	SH63	1992		
Llyn Gafr	SH71	1971		
Tal y Llyn Lake	SH7110	1987		SSSI, SAC
Llyn y Garn	SH7637	2010		SSSI, SAC

Also old records from lakes in SH62, SH63, SH64 and SH94.

Tanacetum vulgare

Tansy

Tansi

Native

Local status: Scarce

Site	Gridref	Year	Comment	Protection
VC48 Merionethshire	SH53	1999		
VC48 Merionethshire	SH63	1999		
Ffestiniog	SH74A	1988		SSSI, SAC, NNR
Llidiardau	SH872382	2013		
Crogen	SJ03D	1999		SSSI, SAC
VC48 Merionethshire	SN59	2012		
Llyn Barfog	SN69P	2011		SSSI

Probably not scarce but some records are very old - from SH50, SH60, SH61, SH71 and SH72.

Teesdalia nudicaulis

Shepherd's cress

Berwr y bugail

Native

Local status: Rare

National status: Near threatened

Site	Gridref	Year	Comment	Protection
Morfa Harlech	SH53	1972		SSSI, SAC
Tyn-y-llechwedd, W of	SJ019480	1979		

Also very old records from SH72, SH82 and SH93.

Thalictrum alpinum

Alpine meadow-rue

Arianllys y mynydd

Native

Local status: Rare

Site	Gridref	Year	Comment	Protection
Moelwyn Mawr	SH656459	1980		
Llyn Gafr, above	SH71	1987		

The status of these records is uncertain and they have never been reconfirmed.

Tragopogon pratensis

Goat's-beard

Barf yr afr

Native

Local status: Scarce

Site	Gridref	Year	Comment	Protection
Tonfanau	SH50R	2009		SSSI, SAC
VC48 Merionethshire	SH52	1986		
Harlech Dunes, Morfa Harlech	SH56803214	2009		SSSI, SAC
Morfa Mawddach Old Railway Track	SH6617	1994	Cofnod	SSSI, SAC
VC48 Merionethshire	SH70	1999		
Tywyn (south of)	SN596978	2009		

In the dunes: also old records from SH73 and SN69.

Trichomanes speciosum (sporophyte)

Killarney fern

Rhedynen Cilarne

Native

Local status: Rare

Welsh Status: Vulnerable

Site	Gridref	Year	Comment	Protection
Cadair Idris	SH71	1995		SSSI, SAC

Extremely rare sporophyte - only one known extant site.

Trifolium fragiferum

Strawberry clover

Meillionen fefusaidd

Native

Local status: Scarce

Site	Gridref	Year	Comment	Protection
VC48 Merionethshire	SH50	1999		
VC48 Merionethshire	SH51	1999		
Morfa Dyffryn	SH5626	2006	Cofnod	SSSI, SAC, NNR
Harlech Dunes, Morfa Harlech	SH56803214	2009		SSSI, SAC
Morfa Dyffryn Car Park and Dunes	SH582213	1995	Cofnod	
VC48 Merionethshire	SN59	1999		

Coastal only: a pre-1970 record from SN69.

Trifolium medium

Zigzag clover

Meillionen igam-ogam

Native

Local status: Scarce

Site	Gridref	Year	Comment	Protection
Llwyn-iarth	SH7017	2013		SSSI
VC48 Merionethshire	SH73	1986		
Ffestiniog, S+E of	SH74A	1987		SSSI, SAC, NNR
Llandderfel, Afon Caletwr	SH93S	2009		SSSI, SAC
Hengair Uchaf	SJ04A	2004		
Pen-y-foel-isaf	SJ04T	2013		

Uncommon even on better sites: old record from SH83.

Trifolium micranthum

Slender trefoil

Meillionen hopysaidd eiddil

Native

Local status: Rare

Site	Gridref	Year	Comment	Protection
Bennar	SH52	2002		SSSI, SAC
VC48 Merionethshire	SH53	1999		
Morfa Dyffryn Car Park and Dunes	SH573224	1985	Cofnod	SSSI, SAC

In the dunes: uncommon but perhaps overlooked. There are older records from SH50 and SN59.

Trifolium ornithopodioides

Bird's foot clover

Corfeillionen wen

Native

Local status: Rare

Site	Gridref	Year	Comment	Protection
Rhyd-y-Garnedd	SH5902	1972		SSSI
Bron-y-foel-ganol	SH607246	2009		
Fairbourne	SH612142	1978		SSSI, SAC
Dyffryn Glyn-cul	SN615982	2009		

Trifolium scabrum

Rough clover

Meillionen arw

Native

Local status: Scarce

Site	Gridref	Year	Comment	Protection
Tonfanau	SH50R	2009		SSSI, SAC
Fairbourne	SH6114	2012		SSSI, SAC
Fairbourne	SH61B	2011		SSSI, SAC
Tywyn (south of)	SN588981	2009		SSSI, SAC

Like other small clovers, somewhat under-recorded.

Trifolium striatum

Knotted clover

Meillionen rychog

Native

Local status: Rare

Site	Gridref	Year	Comment	Protection
VC48 Merionethshire	SH50	1971		
VC48 Merionethshire	SH61	1999		
VC48 Merionethshire	SN59	1999		

Like other small clovers, probably under-recorded. An old record from SH53.

Tripleurospermum inodorum

Scentless mayweed

Amranwen ddi-sawr

Archaeophyte

Local status: Scarce

Site	Gridref	Year	Comment	Protection
Mochras	SH566268	2010		SSSI
Bennar	SH5722	2002		SSSI, SAC
Cilbronrhydd, Harlech	SH606305	1994	Cofnod	
Ffestiniog	SH74A	1988		SSSI, SAC, NNR
Trawscoed	SH8432	1993		SSSI, SAC
Hengair Uchaf	SJ04A	2004		
Merllyn Gwyn	SJ04A	2004		
Cae Mawr	SJ04L	2011		SSSI, SAC
Pandy Capel	SJ05V	2007		
River Alwen, Hafod east	SJ0642	2013		SSSI, SAC
Carrog North East	SJ14H	2013		SSSI, SAC

Occurs sporadically particularly in the east and probably not really scarce. SH72 and SH82 are old sites.

Trisetum flavescens

Yellow oat-grass

Ceirchwellt melyn

Native

Local status: Scarce

Site	Gridref	Year	Comment	Protection
Harlech dunes	SH53	2012		
VC48 Merionethshire	SH61	1999		
Ceunant Cynfal Pastures	SH702414	1993	Cofnod	
Trawscoed	SH846331	1991		
VC48 Merionethshire	SH93	1999		
Coed y Bedo	SH94Q	2005		
Llandrillo Churchyard	SJ034370	2010		
Corwen	SJ04	1987		
VC48 Merionethshire	SN59	1999		

Records from SH63 and SH71 need updating.

Typha angustifolia

Lesser bulrush

Cynffon-y-gath gulddail

Native

Local status: Rare

Site	Gridref	Year	Comment	Protection
VC48 Merionethshire	SH53	1986		
VC48 Merionethshire	SH71	1988		

Ulex x ambigua = U europaeus x gallii

Hybrid gorse

Eithinen groesryw

Native hybrid

Local status: Rare

Site	Gridref	Year	Comment	Protection
VC48 Merionethshire	SH52	1986		
VC48 Merionethshire	SH61	1999		
Cors-y-gedol	SH62	1961		

"An apparently rare, if not overlooked hybrid..." [Chater, 2010]. These records were probably all made by PMB, the BSBI referee for *Ulex*.

Ulmus procera

English elm

Llwyfen Lloegr

Uncertain

Local status: Scarce

Site	Gridref	Year	Comment	Protection
VC48 Merionethshire	SH50	1999		
VC48 Merionethshire	SH51	1999		
VC48 Merionethshire	SH52	1999		
VC48 Merionethshire	SH60	1999		
Coed Buchesydd	SH7720	2005		SSSI, SAC
Crogen	SJ03D	1999		SSSI, SAC
Melin-y-Wig	SJ04J	1987		

Lacking recent updates, especially from SH61, SH62, SH64, SH70, SH81 and SJ04.

Ulmus x hollandica = U glabra x minor x plotii

Dutch elm

Llwyfen yr Iseldiroedd

Native hybrid

Local status: Rare

1 record, 1941 [SH50]. Herb. NMW.

Urtica urens

Small nettle

Danhadlen fach

Archaeophyte

Local status: Scarce

Site	Gridref	Year	Comment	Protection
Llwyngwrl S	SH50Z	2012		SSSI, SAC
Llwyngwrl N	SH51V	2012		SSSI, SAC
VC48 Merionethshire	SH53	1999		
Fairbourne S	SH61B	2011		SSSI, SAC
Tywyn	SN58439939	2010	Cofnod	SSSI, SAC
Aberdyfi Golf Course	SN5997	2012		SSSI, SAC

Mainly coastal: there are old records for SH93, SJ04 and SN69.

Utricularia australis

Bladderwort

Chwysigenddail cyffredin

Native

Local status: Extinct

A single record in 1955, Herb. NMW.

Utricularia minor

Lesser bladderwort

Chwysigenddail bach

Native

Local status: Scarce

Site	Gridref	Year	Comment	Protection
Llangelynnin-Tywyn	SH50	1970		
Lake at Gwerncaernddion	SH608257	2002	Cofnod	
VC48 Merionethshire	SH62	1999		
SH63G Moel Goedog east	SH62933338	2007		
Maesycaerau	SH63973559	2012		
Cregennan, Arthog	SH665140	2012	Cofnod	
Cors Coch	SH6937 +	2011		SSSI, SAC
Llyn Gwernan	SH7016	2012		SSSI, SAC
Llwyn-iarth	SH707176	1992	Cofnod	SSSI
Llyn yr Oerfel	SH7138	1975		SSSI, SAC
Cors y Sarnau	SH972390	1989	Cofnod [site centroid]	SSSI

Probably not scarce; it has been recorded from much suitable habitat in the Vice-county and there are potentially other sites.

Valeriana dioica

Marsh valerian

Triaglog y gors

Native

Local status: Scarce

Site	Gridref	Year	Comment	Protection
Pont Garreg Hyllidrem Marshy Field	SH617433	1992	Cofnod	
Tynybwlich Marshy Fields	SH625345	1993	Cofnod	
Ffynnon Uchaf, Manod - pastures	SH706438	2002	Cofnod	
VC48 Merionethshire	SH71	1986		
Afon Mawddach	SH732214	2004	Cofnod	
VC48 Merionethshire	SH82	1999		
Land at Dinas Mawddwy	SH855152	1995	Cofnod	
Cystyllen Fawr, Castell Hen, Parc	SH863338	1993	Cofnod	
Bryn Halen	SJ04	2013		
Llyn Oror	SJ0847	1996		

Recorded in suitable habitat in many parts of the Vice-county.

Veronica agrestis

Green field-speedwell

Rhwyddlwyn-y-maes
gwyRDD**Archaeophyte**

Local status: Scarce

Site	Gridref	Year	Comment	Protection
VC48 Merionethshire	SH50	1999		
Harlech Forest	SH53R	2003		SSSI, SAC, NNR
VC48 Merionethshire	SH61	1999		
Maesycaerau	SH634358	2011		
N. of Dolgellau	SH729180	2013		
Bala (south)	SH925358	2009		

Older records from SH52, SH60, SH64, SH70 and SH83, the decline probably reflecting changing land use.

Veronica anagallis-aquatica

Blue water-speedwell

Graeanllys y dŵr

Native

Local status: Rare

Site	Gridref	Year	Comment	Protection
Morfa Dyffryn	SH52	2002		SSSI, SAC
Bennar	SH581225	1996	Cofnod	SSSI, SAC

Recorded from time to time in SH52.

Veronica catenata

Pink water-speedwell

Graeanllys-y-dŵr rholiW

Native

Local status: Rare

Site	Gridref	Year	Comment	Protection
Morfa Harlech	SH53	1999		SSSI, SAC

A single site, recorded from time to time but not recently.

Veronica spicata* subsp. *hybrida

Spiked speedwell

Rhwyddlwyn pigfain

Native

Local status: Rare

National status: Waiting list

Site	Gridref	Year	Comment	Protection
Barmouth	SH61	1995		
Craig y Don, Aberdyfi	SN610960	1992		SSSI, SAC

Only known from these two sites.

Vicia lathyroides

Spring vetch

Ffacbysen y gwanwyn

Native

Local status: Rare

Site	Gridref	Year	Comment	Protection
VC48 Merionethshire	SH50	1986		
Harlech Forest	SH53R	2003		SSSI, SAC, NNR
Bennar	SH5722	1996		SSSI, SAC
Morfa Mawddach Old Railway Track	SH624148	1991	Cofnod	SSSI, SAC

In dune grassland but not recently recorded. Older records from SH61 and SN59.

Vicia tetrasperma

Smooth tare

Ffacbysen lefn

Native

Local status: Scarce

Site	Gridref	Year	Comment	Protection
Llanbedr Airfield	SH52S	2013		SSSI, SAC, NNR
VC48 Merionethshire	SH60	1999		
Morfa Mawddach Old Railway Track	SH624148	1994	Cofnod	SSSI, SAC
Farchynys	SH661186	2012		SSSI, SAC
Morfa Mawddach Old Railway Track	SH6718	1994	Cofnod	SSSI, SAC
VC48 Merionethshire	SH73	1986		
Bala, Cywain	SH93I	2009		SSSI, SAC
Ty'n Celyn	SJ1343	2012		SSSI, SAC
Llyn Barfog	SN69P	2011		SSSI

Much increased since Benoit & Richards [1963] but still scarce.

Viola arvensis

Field pansy

Trilliw'r tir âr

Archaeophyte

Local status: Scarce

Site	Gridref	Year	Comment	Protection
VC48 Merionethshire	SH61	1999		
Boncyn, Dinas Mawddwy	SH866165	1993	Cofnod	
Glan-yr-afon, SW of	SJ0041	1987		
Rhos y Maerdy	SJ03P	2007		SSSI, SAC
Berth-ddu	SJ04S	2011		SSSI, SAC
Meiarth	SJ04U	2005		

More frequent in the east of the Vice-county. Older records from SH63, SH92 and SH93.

Viola odorata

Sweet violet

Fioled bêr

Native

Local status: Rare

Site	Gridref	Year	Comment	Protection
VC48 Merionethshire	SH61	1986		
Llandrillo	SJ03I	2009		

Perhaps alien in both these sites. Described in Benoit & Richards [1963] as "A rare escape".

Viola palustris subsp. juressi

Marsh violet

Fioled y gors

Native

Local status: Scarce

Site	Gridref	Year	Comment	Protection
VC48 Merionethshire	SH50	1999		
Cwm Nantcol	SH62I	2011		SSSI, SAC
Maesyaerau	SH634359	2011		
Cwm Gelli Iago, Nantmor	SH634480	1995	Cofnod	
Dduallt	SH64Q	2009		SSSI, SAC, NNR
Llyn Cwm y Foel HEP	SH65404665	1997	Cofnod	
Llyn Oerfel	SH7038	2011		SSSI, SAC
VC48 Merionethshire	SH71	1988		
VC48 Merionethshire	SH72	1999		
Ffestiniog, S+E of	SH74A	1987		SSSI, SAC, NNR
Afon Gamallt	SH74G	1988		SSSI, SAC

As a subspecies it is sparsely distributed, mostly to the north and west but often grows with *V. palustris subsp. palustris*. There are many undifferentiated records, as it was not recorded separately before 1970.

Viola reichenbachiana

Early dog-violet

Fioled y coed

Native

Local status: Dubious

Never reliably recorded in VC48. Not in VCCC.

Viola tricolor

Wild pansy

Trilliw

Native

Local status: Scarce

National status: Near threatened

Welsh Status: Vulnerable

Site	Gridref	Year	Comment	Protection
Harlech Dunes, Morfa Harlech	SH56803214	2009		SSSI, SAC
Trawscoed	SH848326	1994		
Coed Cae	SH8917	1984		

Both subspecies are Scarce/Rare, although not uncommon in the dunes and sparingly as arable relics inland. Many older records are not determined to subspecies e.g. in SH50 and SH61.

Viola tricolor subsp. curtisii

Wild pansy

Trilliw

Native

Local status: Scarce

Site	Gridref	Year	Comment	Protection
VC48 Merionethshire	SH50	1986		
Harlech West	SH53Q	2007		SSSI, SAC, NNR
Morfa Dyffryn	SH5525+	2006	Cofnod	SSSI, SAC, NNR
Morfa Harlech	SH5632+	2013		SSSI, SAC, NNR
VC48 Merionethshire	SH61	1986		

No noticeable decline.

Viola tricolor subsp. tricolor

Wild pansy

Trilliw

Native

Local status: Rare

National status: Near threatened

Welsh Status: Vulnerable

Site	Gridref	Year	Comment	Protection
VC48 Merionethshire	SH83	1999		

Older records from SH52, SH53, SH82 and SJ04.

Viola x intersita = V canina x riviniana

Hybrid violet

Fioled goesryw

Native hybrid

Local status: Rare

Site	Gridref	Year	Comment	Protection
VC48 Merionethshire	SH50	1986		
VC48 Merionethshire	SH564251	2013		SSSI, SAC
VC48 Merionethshire	SN59	1999		

Occasional in the dunes: older records from SH51, SH53 and SH61.

Viscum album

Mistletoe

Uchelwydd

Native

Local status: Rare

Site	Gridref	Year	Comment	Protection
Penmaenpool	SH695185	2005		
VC48 Merionethshire	SN69D	1973		SSSI, SAC, NNR, Ramsar

Only known from Penmaenpool where it is almost certainly planted, on Rowan. The Aberdyfi site has not been re-found.

Vulpia ciliata

Bearded fescue

Peisgwelld barfog

Native

Local status: Rare

Welsh Status: Vulnerable

Site	Gridref	Year	Comment	Protection
Aberdyfi Golf Links	SN69	1991		

This is the only record [PMB] - the first in Wales. Herb. NMW.

Vulpia fasciculata

Dune fescue

Peisgwelld y twyni

Native

Local status: Rare

Site	Gridref	Year	Comment	Protection
Harlech Dunes, Morfa Harlech	SH568321	2013		SSSI, SAC
Morfa Harlech NNR	SH5731	2013		SSSI, SAC, NNR
Sanddunes, Morfa Dyffryn	SH573224	1976		SSSI, SAC
Fairbourne to Morfa Mawddach Embankment	SH61	2011		
Aberdyfi-Tywyn	SN595964	1991		SSSI, SAC
Aberdyfi	SN6195	1991		SSSI, SAC, NNR, Ramsar

Woodsia ilvensis

Oblong woodsia

Rhedynden-Woodsia hirgul

Native

Local status: Extinct

National status: Endangered

Welsh Status: Critically endangered, Section 42

Last record on Cader Idris in 1894 [SH71].

Zannichellia palustris

Horned pondweed

Llynwlyddyn corniog

Native

Local status: Rare

Site	Gridref	Year	Comment	Protection
Minffordd-Portmadoc, R Glaslyn	SH53	1970		
Morfa Harlech	SH5633	1993		SSSI, SAC, NNR
Tyddyn Gwynt, nr	SH6030	1994		

Zostera marina

Eelgrass

Gwellt y gamlas

Native

Local status: Dubious

National status: Near threatened

Never confirmed anywhere between Pembrokeshire and Lleyn. Not in VCCC and Ellis [1983] says [probably referring to a 1931 record] "only...washed up by the tide".