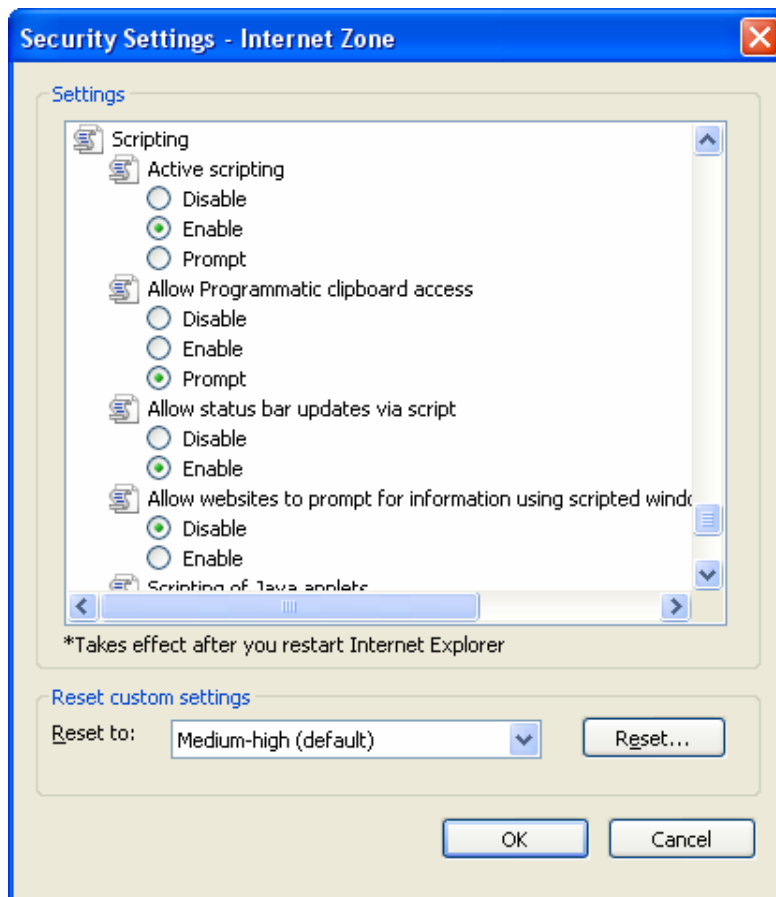


## Using the Ordnance Survey's Get-a-map™ web site to check grid references.

I find [www.ordnancesurvey.co.uk/oswebsite/getamap](http://www.ordnancesurvey.co.uk/oswebsite/getamap) to be an invaluable tool when determining or checking grid references.

1. You can display any 2km x 2km section of the 1:25000 OS map for any part of the UK (and the data is more up-to-date than several of my paper maps).
2. Most usefully, with the cursor over the map, you can read off the grid reference at the cursor position on the status bar at the bottom.

I was somewhat annoyed, therefore, to discover that this grid reference display had disappeared when I upgraded to Internet Explorer 7. I finally found a new 'security' feature had turned it off. This can be found in the 'Scripting' section on the 'Security' tab under 'Tools' > 'Internet Options' (Custom Level..., Internet Zone). Note that active scripting also needs to be enabled.



Other Browsers: As far as I can tell, this feature also seems to work OK using Firefox (though you get an arrow cursor rather than the crosshairs) but I have yet to get it to work with Netscape Navigator 7.2.

**Update 2009:** The same happened when Internet Explorer 8 was distributed and you will need to repeat the above. Tools > Internet Options > Security Tab > Custom Level and scroll down until you see the above window, and adjust the settings to match. Then OK, then Apply (if not greyed out) and finally OK. Then close Internet Explorer and relaunch.