

Glenlivet Estate

Checklist of Vascular Plants

Version 1.1

Andy Amphlett

August 2008



The Botanical Society of the British Isles

The BSBI is for everyone who is interested in the flora of Britain and Ireland. The society traces its origins back to 1836, when it was founded as the Botanical Society of London. From its earliest days it has welcomed both professional and amateur members, and it remains the biggest and most active organisation devoted to the study of botany in the British Isles.

The BSBI produces national Atlases and county Floras of the distribution of plants, and guides to the identification of more difficult plant groups. It publishes a scientific journal, *Watsonia*, in which studies of British and Irish vascular plants, their taxonomy, biosystematics, ecology, distribution and conservation are published, as well as topics of a more general or historical nature. BSBI also organises field and indoor meetings as well as conferences on botany.

Members are kept informed by a newsletter (BSBI News) three times a year and are invited to make use of our system of county recorders and national referees who can help with the identification of plants.

An education programme supported by the society brings high quality botanical training within the reach of all, from A Level students to professional development and postgraduate courses.

Scientific research on British botany is supported through grants awarded by the Science & Research Committee and through the work of the Plant Unit.

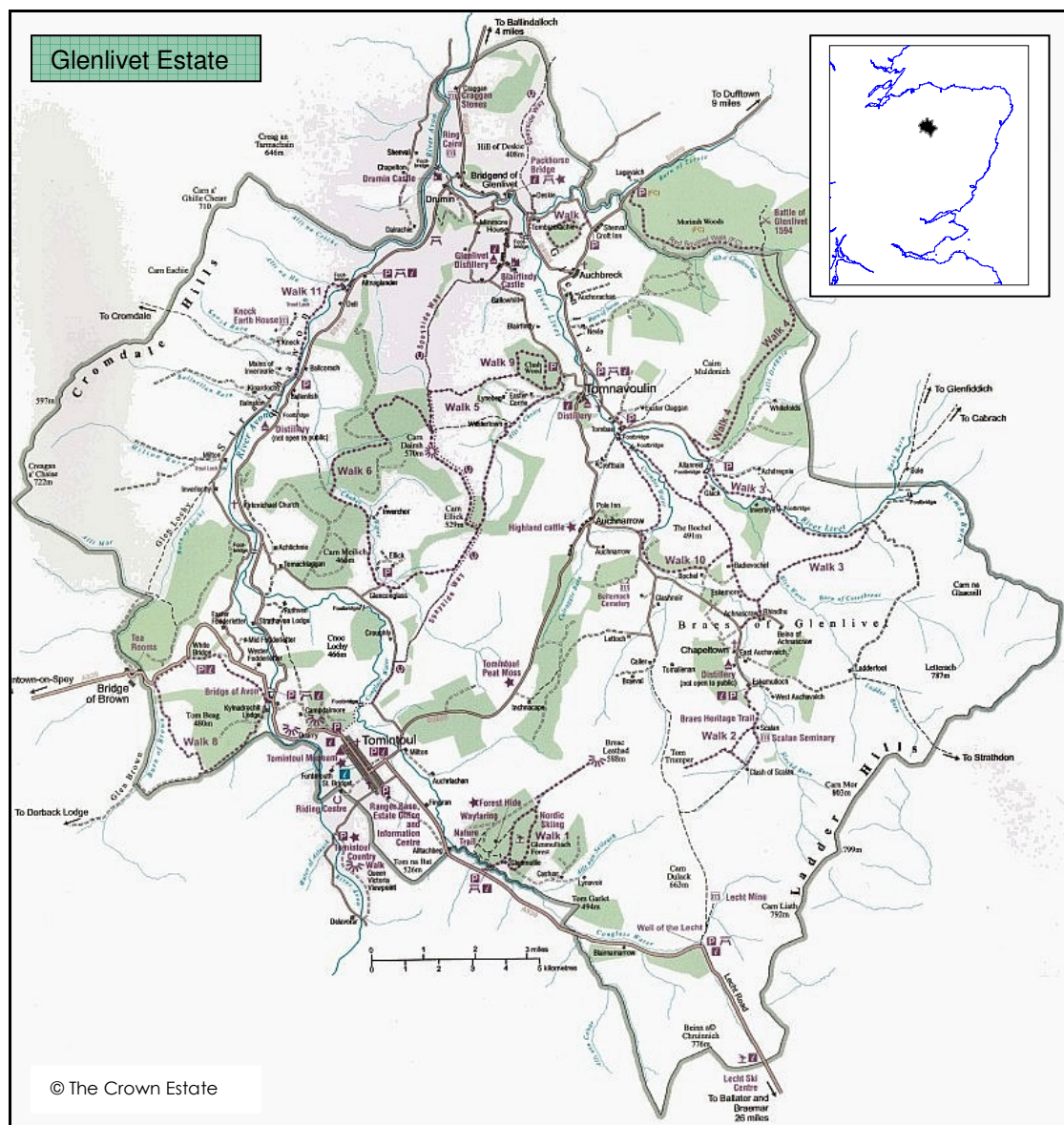
For more information go to www.bsbi.org.uk

Introduction

This checklist includes all species of vascular plants, (clubmosses, horsetails, ferns, trees, wild flowers, grasses, sedges and rushes) which have been recorded in the wild (ie. outside of gardens) within Glenlivet Estate. It makes available in summary form, the data collected and collated by BSBI County Recorders over the last 50 or so years. It is intended to be of interest and use to local and visiting naturalists, landowners and managers, professional agencies and visitors. Hopefully it will be a stimulus to further botanical recording, such that future editions will be more comprehensive.

Area covered by the checklist

All records referred to in the Checklist are from Glenlivet Estate in north-east Scotland, part of The Crown Estate. Information about the Estate, can be obtained from the Glenlivet Estate web site www.glenlivetestate.co.uk



The Estate extends to 21,174 hectares, and ranges in altitude from 180 to 804m ASL. Annual precipitation averages 800 – 1000mm, while in a 'Survey of the Province of Moray' (Grant and Leslie 1798), it was said (only slightly pessimistically) that "There is little to recommend the climate, always cold in winter and in summer seldom warm ...". Glenlivet Estate lies entirely within the old county of Banffshire (botanical vice-county 94).

History of recording

The Checklist is based on c. 9000 individual plant records. The earliest traced for Glenlivet Estate are from 1839. However, 90% of the records have been made since 1980, and nearly 50% since the year 2000. 69% of species have been recorded since 2000, and 92% since 1980. Older historical records may be under-represented in the Checklist as most early 20th century records in Banffshire were only recorded at the resolution of individual parishes, which in this part of Scotland are very large, extending well outside the limits of the Estate. Such records, which cannot be confirmed as being from Glenlivet Estate, have been excluded.

The Checklist

- Taxon:** Taxa are listed in alphabetical order of scientific names. These follow Stace, C. (1997). *New Flora of the British Isles*. 2nd Edition. Species which are native to Glenlivet are shown in bold typeface.
- Common name:** In almost all cases follows those used in Stace (1997).
- Year last recorded from Glenlivet:** The most recent calendar year in which the taxon was recorded within Glenlivet Estate.
- Status:** *Native*. Believed to be native to Glenlivet Estate.
Alien (A). *Archaeophyte*. A non-native species, first established in the wild in the British Isles before 1500.
Alien (N). *Neophyte*. A non-native species, first established in the wild in the British Isles after 1500. The term *Casual*, meaning an alien taxon not maintaining itself by self-seeding or vegetative spread, is not used in the Checklist. When first encountering a plant in the field it is often not possible to assess whether it is only *Casual* or is *Established*. When dealing with historic records, it is usually impossible.
- National status:** The following categories are listed:
- UK Biodiversity Action Plan (BAP) species.
 - Those species with a *Threat Level* above *Least Concern* in Cheffings, C. and Farrell, L. (2005). *The Vascular Plant Red Data List for Great Britain*.

- Species recorded from 1 to 15 hectads (10 x 10km Ordnance Survey grid squares) in Great Britain during the period 1987 to 1999 (*Nationally Rare*).
- Species recorded in 16 to 100 hectads in Great Britain, 1987 to 1999 (*Nationally Scarce*).
- The national statuses of the species within the genera *Hieracium* and *Taraxacum* are not as well known as those of other plants in the Checklist, and they are not listed as Scarce or Rare in the national Status column. However, c.8 out of 13 *Hieracium* species and c.7 of 22 *Taraxacum* species have been recorded from less than 100 hectads in GB www.bsbimaps.org.uk/atlas.

Provisional county status: This is given on a 6-point scale, based on the number of tetrads (2 x 2km Ordnance Survey grid squares) that each taxon has been recorded from in Banffshire (all years combined).

Rare (1 – 3 tetrads); Scarce (4 – 10), Local (11 – 40); Frequent (41 – 75); Common (76 – 100) and Very Common (>100).

Number of records from Glenlivet: The number of records in the BSBI vc94 database from Glenlivet Estate. The number of records gives, with caveats, an indication of the relative frequency of each species. As a frequency measure it combines both how widespread a species is and also how it has persisted through time. In general, the commoner species tend to be under-recorded relative to their absolute abundances. Some rare species are over-represented in the database, due to repeat recording of a small number of populations.

Species summary

509 of 630 taxa (81%) listed in the Checklist are considered to be native to Glenlivet Estate. The date of introduction of alien species to the local area is unknown. However, nationally, 5% are thought to be old (pre-1500) introductions by man, and 14% are more recent introductions or are casual species that have not become well established here.

Species of Conservation Concern

The table below lists all those taxa with a National conservation status.

Taxon	Common name	Year last recorded	National status
<i>Allium oleraceum</i>	Field Garlic	2007	Vulnerable
<i>Arabis petraea</i>	Northern Rock-cress	2006	Vulnerable
<i>Carum carvi</i>	Caraway	1956	BAP, Endangered
<i>Coeloglossum viride</i>	Frog Orchid	1988	BAP, Vulnerable
<i>Corallorhiza trifida</i>	Coralroot Orchid	2008	Vulnerable
<i>Cornus suecica</i>	Dwarf Cornel	1983	Near Threatened
<i>Crepis mollis</i>	Northern Hawk's-beard	1906	BAP, Endangered
<i>Cystopteris dickieana</i>	Dickie's Bladder-fern	2007	Vulnerable
<i>Elymus caninus</i> var. <i>donianus</i>	Don's Twitch	2005	Rare
<i>Epipactis atrorubens</i>	Dark-red Helleborine	1998	Scarce
<i>Equisetum pratense</i>	Shady Horsetail	1994	Scarce
<i>Equisetum variegatum</i>	Variiegated Horsetail	2005	Scarce
<i>Galeopsis speciosa</i>	Large-flowered Hemp-nettle	1983	Vulnerable
<i>Genista anglica</i>	Petty whin	2006	Near Threatened
<i>Gentianella campestris</i>	Field Gentian	2006	BAP, Vulnerable
<i>Gnaphalium supinum</i>	Dwarf Cudweed	1988	Near Threatened
<i>Gnaphalium sylvaticum</i>	Heath Cudweed	1982	Endangered
<i>Juncus balticus</i>	Baltic Rush	2005	Scarce
<i>Juniperus communis</i> subsp. <i>communis</i>	Juniper	2008	BAP
<i>Linnaea borealis</i>	Twinflower	2006	BAP, Scarce
<i>Peucedanum ostruthium</i>	Masterwort	2008	Near Threatened
<i>Platanthera bifolia</i>	Lesser Butterfly-orchid	1994	BAP, Vulnerable
<i>Pseudorchis albida</i>	Small-white Orchid	1990	BAP, Vulnerable
<i>Pyrola media</i>	Intermediate Wintergreen	1981	Vulnerable
<i>Rumex pseudoalpinus</i>	Monk's-rhubarb	2008	Near Threatened
<i>Saxifraga hypnoides</i>	Mossy Saxifrage	1975	Vulnerable
<i>Sedum villosum</i>	Hairy Stonecrop	1997	Near Threatened
<i>Spergula arvensis</i>	Corn Spurrey	2006	Vulnerable
<i>Vaccinium microcarpum</i>	Small Cranberry	2008	Scarce
<i>Veronica serpyllifolia</i> subsp. <i>humifusa</i>	Thyme-leaved Speedwell	2008	Near Threatened
<i>Viola canina</i>	Heath Dog-violet	2006	Near Threatened
<i>Viola tricolor</i> subsp. <i>tricolor</i>	Wild Pansy	1990	Near Threatened

60% of the plant species recorded from Glenlivet Estate, are, at the county level, *Local* (or rarer).

Plant records

There remains enormous scope for plant recording in Glenlivet. Any records of plants from within the Estate would be gratefully received by the BSBI county recorder (see contact details below). However, the value of these records will be maximised if the following guidelines are followed.

What? Identify the plant correctly, and if in doubt check with someone with greater experience. As county recorder, I will be pleased to offer assistance. Scientific name is best, but common names are fine if unambiguous. If in doubt give both.

Where? Give an Ordnance Survey grid reference. The minimum preferred resolution is a 6-figure grid reference, but a 1km square (as shown on all OS maps), is acceptable for commoner species. If available, please use a hand held GPS to determine grid-references. If the record is of a species known to be uncommon on the Estate, or nationally notable, an 8-figure grid reference is the ideal, but only if determined by GPS. Please don't use grid references for the centre of large sites, or combine species seen in adjacent grid squares into one list.

Give the site where the plant was recorded a name, based on place names or other features on the OS 1:50 000 or 1:25 000 maps. Site name can usefully include information which narrows down where the record was made, eg. 'East bank of River Avon' or 'Footpath below Drumin Tower'.

When? The full date: day, month and year.

Who? The name of the recorder(s). If someone else confirmed or made the identification, please give their name as well.

The four "Ws" – What? Where? When? and Who? are the basic requirements of a plant record. In addition, if appropriate, make a count of plants or estimate their abundance or extent. Again this is most useful for the scarcer or more notable species. Add anything else you might want to say about a record as a comment.

While full species lists for a site are especially valuable, all records are useful, and will be incorporated into the BSBI database for the county. This data is regularly copied to the BSBI central database, where it is used to update national distribution maps www.bsbimaps.org.uk/atlas. The data will also, periodically, be copied to the North East Scotland Biological Records Centre (NESBReC) and made available to the Glenlivet Estate Wildlife Recording Group.

Contact details

The author can be contacted at:

72, Strathspey Drive, Grantown on Spey, Morayshire, PH26 3EY.

Taxon	Common name	Year last recorded from Glenlivet	Status	National status	Provisional County status	Number of records confirmed from Glenlivet
Abies nordmanniana	Caucasian Fir	2008	Alien (N)		Rare	1
Abies procera	Noble Fir	2008	Alien (N)		Scarce	1
Acer campestre	Field Maple	2008	Alien (N)		Scarce	1
Acer platanoides	Norway Maple	2004	Alien (N)		Local	1
Acer pseudoplatanus	Sycamore	2008	Alien (N)		Common	26
Achillea millefolium	Yarrow	2008	Native		Very Common	65
Achillea ptarmica	Sneezewort	2008	Native		Common	31
Adoxa moschatellina	Moschatel	2006	Native		Local	5
Aegopodium podagraria	Ground-elder	2008	Alien (A)		Common	23
Aesculus hippocastanum	Horse-chestnut	1980	Alien (N)		Local	1
Agrostis canina sensu lato (incl. A. vinealis)	Velvet Bent	2008	Native		Local	23
Agrostis canina sensu stricto	Velvet Bent	2005	Native		Local	2
Agrostis capillaris	Common Bent	2006	Native		Common	43
Agrostis stolonifera	Creeping Bent	2008	Native		Frequent	19
Agrostis vinealis	Brown Bent	2006	Native		Local	12
Aira caryophyllea	Silver Hair-grass	2004	Native		Local	3
Aira praecox	Early Hair-grass	2005	Native		Local	9
Ajuga reptans	Bugle	2008	Native		Frequent	39
Alchemilla alpina	Alpine Lady's-mantle	2008	Native		Local	15
Alchemilla filicaulis	Hairy Lady's-mantle	2008	Native		Local	12
Alchemilla filicaulis subsp. filicaulis	A Lady's-mantle	2008	Native		Local	5
Alchemilla filicaulis subsp. vestita	Common Lady's mantle	2001	Native		Local	3

Alchemilla glabra	Smooth Lady's-mantle	2008	Native		Common	64
Alchemilla xanthochlora	Intermediate Lady's-mantle	2008	Native		Frequent	11
Alliaria petiolata	Garlic Mustard	2008	Native		Frequent	12
Allium oleraceum	Field Garlic	2007	Native	Vulnerable	Rare	4
Alnus glutinosa	Alder	2008	Native		Common	47
Alopecurus geniculatus	Marsh Foxtail	2008	Native		Frequent	16
Alopecurus pratensis	Meadow Foxtail	2008	Native		Frequent	16
Amsinckia micrantha	Common Fiddleneck	1983	Alien (N)		Scarce	1
Anchusa arvensis	Bugloss	1982	Alien (A)		Local	2
Anemone nemorosa	Wood Anemone	2008	Native		Common	42
Angelica sylvestris	Wild Angelica	2008	Native		Very Common	43
Antennaria dioica	Mountain Everlasting	2001	Native		Local	9
Anthoxanthum odoratum	Sweet Vernal-grass	2008	Native		Very Common	76
Anthriscus sylvestris	Cow Parsley	2008	Native		Very Common	31
Anthyllis vulneraria	Kidney Vetch	2006	Native		Local	18
Aphanes arvensis	Parsley-piert	1996	Native		Scarce	2
Aphanes arvensis agg.	Parsley-piert	2005	Native		Local	7
Aphanes australis	Slender Parsley-piert	1983	Native		Local	2
Aquilegia vulgaris	Columbine	2008	Alien (N)		Local	13
Arabidopsis thaliana	Thale Cress	2004	Native		Local	8
Arabis hirsuta	Hairy Rock-cress	2008	Native		Local	14
Arabis petraea	Northern Rock-cress	2006	Native	Vulnerable	Local	8
Arctium nemorosum	Wood Burdock	1982	Native		Local	1
Arctium sp.	A Burdock	2005	Native		Local	2
Arctostaphylos uva-ursi	Bearberry	2008	Native		Local	13
Arenaria serpyllifolia	Thyme-leaved Sandwort	2005	Native		Local	9
Arenaria serpyllifolia subsp. leptoclados	Slender Sandwort	2001	Native		Rare	1
Arenaria serpyllifolia subsp. serpyllifolia	Thyme-leaved Sandwort	1999	Native		Local	3

Arrhenatherum elatius	False Oat-Grass	2006	Native		Frequent	28
Artemisia vulgaris	Mugwort	1975	Alien (A)		Local	1
Asplenium ruta-muraria	Wall-rue	2005	Native		Local	3
Aster agg.	Michaelmas Daisy	2006	Alien (N)		Scarce	1
Athyrium filix-femina	Lady-fern	2008	Native		Frequent	26
Avena fatua	Wild-oat	1982	Alien (A)		Local	1
Barbarea vulgaris	Winter-cress	1984	Native		Local	5
Bellis perennis	Daisy	2008	Native		Very Common	57
Betula pendula	Silver Birch	2006	Native		Common	15
Betula pubescens	Downy Birch	2008	Native		Common	68
Betula pubescens subsp. pubescens	Downy Birch	1981	Native		Rare	2
Betula pubescens subsp. tortuosa	Downy Birch	1983	Native		Scarce (under-recorded)	2
Blechnum spicant	Hard-fern	2008	Native		Very Common	46
Botrychium lunaria	Moonwort	1999	Native		Local	3
Brachypodium pinnatum	Heath False-brome	1866	Native?		Rare	1
Brachypodium sylvaticum	False-brome	2005	Native		Local	8
Brassica napus	Rape	1983	Alien (N)		Local	2
Briza media	Quaking-grass	2008	Native		Frequent	83
Bromopsis ramosa	Hairy-brome	2005	Native		Scarce	3
Bromus hordeaceus	Soft-brome	2004	Native		Local	4
Bromus hordeaceus subsp. hordeaceus	Common Soft-brome	1980	Native		Scarce	1
Bromus lepidus	Slender Soft-brome	1974	Alien (N)		Rare	3
Bromus x pseudothominei	Lesser Soft-brome	1982	Alien (N)		Rare	1
Callitriche agg.	Water-starwort	2008	Native		Local	19
Callitriche hamulata	Intermediate Water-starwort	1998	Native		Local	4
Callitriche stagnalis	Common Water-starwort	1998	Native		Scarce	10
Calluna vulgaris	Heather	2008	Native		Very Common	62
Caltha palustris	Marsh-marigold	2008	Native		Common	54
Caltha palustris var. radicans	Marsh-marigold	2008	Native		Scarce	3

Campanula latifolia	Giant Bellflower	2006	Native		Local	10
Campanula rapunculoides	Creeping Bellflower	2006	Alien (N)		Scarce	2
Campanula rotundifolia	Harebell	2008	Native		Common	44
Capsella bursa-pastoris	Shepherd's-purse	2008	Alien (A)		Frequent	18
Cardamine amara	Large Bitter-cress	2008	Native		Local	17
Cardamine flexuosa	Wavy Bitter-cress	2008	Native		Common	36
Cardamine hirsuta	Hairy Bitter-cress	2008	Native		Frequent	17
Cardamine pratensis	Cuckooflower	2008	Native		Common	42
Carduus nutans	Musk Thistle	1982	Native		Rare	1
Carex binervis	Green-ribbed Sedge	2008	Native		Common	47
Carex caryophylla	Spring-sedge	2008	Native		Local	10
Carex curta	White Sedge	2008	Native		Local	12
Carex dioica	Dioecious Sedge	2008	Native		Local	21
Carex echinata	Star Sedge	2008	Native		Frequent	42
Carex flacca	Glaucous Sedge	2008	Native		Frequent	31
Carex hostiana	Tawny Sedge	2008	Native		Local	46
Carex laevigata	Smooth-stalked Sedge	1975	Native		Scarce	1
Carex nigra	Common Sedge	2008	Native		Frequent	39
Carex ovalis	Oval Sedge	2008	Native		Frequent	21
Carex pallescens	Pale Sedge	2008	Native		Local	8
Carex panicea	Carnation Sedge	2008	Native		Frequent	56
Carex pauciflora	Few-flowered Sedge	2008	Native		Local	10
Carex pilulifera	Pill Sedge	2008	Native		Frequent	20
Carex pulicaris	Flea Sedge	2008	Native		Frequent	42
Carex remota	Remote Sedge	2006	Native		Local	1
Carex rostrata	Bottle Sedge	2008	Native		Local	15
Carex viridula	Yellow-sedge	2008	Native		Frequent	45
Carex viridula subsp. brachyrrhyncha	Long-stalked Yellow-sedge	2008	Native		Local	16

Carex viridula subsp. brachyrrhyncha var. scotica	Long-stalked Yellow-sedge	1980	Native		Scarce	1
Carex viridula subsp. oedocarpa	Common Yellow-sedge	2008	Native		Frequent	27
Carex x fulva	C. hostiana x viridula	1999	Native		Rare	1
Carum carvi	Caraway	1956	Alien (A)	BAP, Endangered	Scarce	5
Centaurea montana	Perennial Cornflower	2008	Alien (N)		Scarce	4
Centaurea nigra	Common Knapweed	2008	Native		Very Common	43
Cerastium fontanum	Common Mouse-ear	2008	Native		Very Common	76
Cerastium glomeratum	Sticky Mouse-ear	2004	Native		Local	11
Ceratocarpus claviculata	Climbing Corydalis	2006	Native		Scarce	1
Chaerophyllum temulum	Rough Chervil	1969	Native		Scarce	1
Chamerion angustifolium	Rosebay Willowherb	2008	Native		Very Common	18
Chenopodium album	Fat-hen	2006	Native		Local	2
Chionodoxa forbesii	Glory-of-the-snow	2004	Alien (N)		Scarce	2
Chrysosplenium alternifolium	Alternate-leaved Golden-saxifrage	2005	Native		Local	6
Chrysosplenium oppositifolium	Opposite-leaved Golden-saxifrage	2008	Native		Common	27
Cicerbita macrophylla	Common Blue-sow-thistle	2006	Alien (N)		Local	12
Cirsium arvense	Creeping Thistle	2008	Native		Very Common	56
Cirsium heterophyllum	Melancholy Thistle	2008	Native		Local	29
Cirsium palustre	Marsh Thistle	2008	Native		Very Common	71
Cirsium vulgare	Spear Thistle	2008	Native		Very Common	53
Claytonia sibirica	Pink Purslane	2008	Alien (N)		Local	4
Clinopodium vulgare	Wild Basil	1989	Native		Rare	7
Cochlearia pyrenaica subsp. alpina	Pyrenean Scurvygrass	2005	Native		Scarce	9
Coeloglossum viride	Frog Orchid	1988	Native	BAP, Vulnerable	Local	3
Colchicum autumnale	Meadow Saffron	2004	Alien (N)		Scarce	1
Conium maculatum	Hemlock	2006	Alien (A)		Local	1
Conopodium majus	Pignut	2008	Native		Common	42
Corallorhiza trifida	Coralroot Orchid	2008	Native	Vulnerable	Scarce	5
Cornus suecica	Dwarf Cornel	1983	Native	Near Threatened	Local	7

Corylus avellana	Hazel	2008	Native		Frequent	37
Cotoneaster sp.	A Cotoneaster	2002	Alien (N)		Scarce	1
Crataegus monogyna	Hawthorn	2008	Native		Frequent	10
Crepis capillaris	Smooth Hawk's-beard	2006	Native		Local	17
Crepis mollis	Northern Hawk's-beard	1906	Native	BAP, Endangered	Rare	2
Crepis paludosa	Marsh Hawk's-beard	2008	Native		Frequent	42
Crocus x stellaris	Yellow Crocus (C. angustifolius x flavus)	2004	Alien (N)		Scarce	2
Cynosurus cristatus	Crested Dog's-tail	2008	Native		Common	62
Cystopteris dickieana	Dickie's Bladder-fern	2007	Native	Vulnerable	Rare	4
Cystopteris fragilis	Brittle Bladder-fern	2008	Native		Local	8
Cytisus scoparius	Broom	2008	Native		Very Common	38
Dactylis glomerata	Cock's-foot	2008	Native		Very Common	55
Dactylorhiza fuchsii	Common Spotted-orchid	2001	Native		Local	8
Dactylorhiza incarnata	Early Marsh-orchid	2008	Native		Scarce	10
Dactylorhiza maculata	Heath Spotted-orchid	2008	Native		Frequent	42
Dactylorhiza purpurella	Northern Marsh-orchid	2008	Native		Frequent	46
Dactylorhiza x formosa	D. maculata x purpurella	1983	Native		Scarce	1
Danthonia decumbens	Heath-grass	2006	Native		Local	14
Deschampsia cespitosa	Tufted Hair-grass	2008	Native		Very Common	77
Deschampsia flexuosa	Wavy Hair-grass	2008	Native		Very Common	37
Digitalis purpurea	Foxglove	2008	Native		Very Common	36
Diphasiastrum alpinum	Alpine Clubmoss	2002	Native		Local	4
Draba incana	Hoary Whitlowgrass	1968	Native		Scarce	4
Drosera rotundifolia	Round-leaved Sundew	2008	Native		Local	19
Dryopteris affinis	Scaly Male-fern	2008	Native		Frequent	18
Dryopteris affinis subsp. affinis	Scaly Male-fern	1982	Native		Scarce	1
Dryopteris carthusiana	Narrow Buckler-Fern	2006	Native		Local	4
Dryopteris dilatata	Broad Buckler-fern	2008	Native		Very Common	24
Dryopteris expansa	Northern Buckler-fern	1983	Native		Scarce	1
Dryopteris filix-mas	Male-fern	2008	Native		Very Common	29

<i>Echinops exaltatus</i>	Globe-thistle	1983	Alien (N)		Rare	1
Eleocharis palustris	Common Spike-rush	1995	Native		Local	2
Eleocharis quinqueflora	Few-flowered Spike-rush	2008	Native		Local	24
Elymus caninus	Bearded Couch	2005	Native		Scarce	11
Elymus caninus var. caninus	Bearded Couch	2005	Native		Scarce	4
Elymus caninus var. donianus	Don's Twitch	2005	Native	Rare	Rare	7
Elytrigia repens	Common Couch	2006	Native		Local	11
Empetrum nigrum	Crowberry	2008	Native		Frequent	21
Empetrum nigrum subsp. hermaphroditum	Mountain Crowberry	2006	Native		Local	6
Empetrum nigrum subsp. nigrum	Crowberry	1998	Native		Local	4
Epilobium alsinifolium	Chickweed Willowherb	2005	Native		Local	5
Epilobium anagallidifolium	Alpine Willowherb	1967	Native		Local	3
<i>Epilobium brunnescens</i>	New Zealand Willowherb	2008	Alien (N)		Local	18
<i>Epilobium ciliatum</i>	American Willowherb	2006	Alien (N)		Frequent	8
Epilobium montanum	Broad-leaved Willowherb	2008	Native		Frequent	16
Epilobium obscurum	Short-fruited Willowherb	2006	Native		Local	8
Epilobium palustre	Marsh Willowherb	2008	Native		Frequent	30
Epilobium parviflorum	Hoary Willowherb	1990	Native		Scarce	2
Epilobium x haynaldianum	<i>E. alsinifolium</i> x <i>palustre</i>	1904	Native		Rare	1
Epilobium x rivulicola	<i>E. alsinifolium</i> x <i>obscurum</i>	1905	Native		Rare	1
Epipactis atrorubens	Dark-red Helleborine	1998	Native	Scarce	Scarce	11
Epipactis helleborine	Broad-leaved Helleborine	2005	Native		Rare	16
Equisetum arvense	Field Horsetail	2008	Native		Common	32
Equisetum fluviatile	Water Horsetail	2008	Native		Frequent	18
Equisetum hyemale	Dutch Rush	2008	Native		Scarce	3
Equisetum palustre	Marsh Horsetail	2008	Native		Local	30
Equisetum pratense	Shady Horsetail	1994	Native	Scarce	Scarce	3
Equisetum sylvaticum	Wood Horsetail	2008	Native		Frequent	33
Equisetum variegatum	Variegated Horsetail	2005	Native	Scarce	Scarce	3

<i>Eranthis hyemalis</i>	Winter Aconite	2006	Alien (N)		Scarce	3
<i>Erica cinerea</i>	Bell Heather	2008	Native		Common	30
<i>Erica tetralix</i>	Cross-leaved Heath	2008	Native		Frequent	38
<i>Erinus alpinus</i>	Fairy Foxglove	2006	Alien (N)		Scarce	1
<i>Eriophorum angustifolium</i>	Common Cottongrass	2008	Native		Frequent	44
<i>Eriophorum latifolium</i>	Broad-leaved Cottongrass	2008	Native		Scarce	13
<i>Eriophorum vaginatum</i>	Hare's-tail Cottongrass	2008	Native		Frequent	23
<i>Erophila verna sens. lat.</i>	Common Whitlowgrass	2008	Native		Frequent	17
<i>Euphorbia helioscopia</i>	Sun Spurge	1983	Alien (A)		Local	3
<i>Euphrasia arctica</i>	An Eyebright	1983	Native		Local	2
<i>Euphrasia arctica subsp. borealis</i>	An Eyebright	1954	Native		Local	1
<i>Euphrasia confusa</i>	An Eyebright	1980	Native		Scarce	2
<i>Euphrasia micrantha</i>	An Eyebright	1983	Native		Scarce	4
<i>Euphrasia officinalis agg.</i>	Eyebright	2008	Native		Frequent	48
<i>Euphrasia scottica</i>	An Eyebright	1968	Native		Scarce	1
<i>Euphrasia x difformis</i>	<i>E. arctica</i> x <i>micrantha</i>	1983	Native		Rare	1
<i>Euphrasia x venusta</i>	<i>E. arctica</i> subsp. <i>borealis</i> x <i>scottica</i>	1983	Native		Rare	1
<i>Fagus sylvatica</i>	Beech	2008	Alien (N)		Common	5
<i>Fallopia convolvulus</i>	Black-bindweed	1996	Alien (A)		Local	3
<i>Festuca arundinacea</i>	Tall Fescue	1967	Native		Local	2
<i>Festuca filiformis</i>	Fine-leaved Sheep's-fescue	1983	Native		Local	3
<i>Festuca gigantea</i>	Giant Fescue	1954	Native		Scarce	1
<i>Festuca ovina agg.</i>	Sheep's-fescue	2008	Native		Frequent	33
<i>Festuca ovina subsp. ovina</i>	Sheep's-fescue	1996	Native		Rare	1
<i>Festuca pratensis</i>	Meadow Fescue	1981	Native		Scarce	3
<i>Festuca rubra agg.</i>	Red Fescue	2008	Native		Frequent	34
<i>Festuca rubra subsp. rubra</i>	Red Fescue	1981	Native		Scarce	2
<i>Festuca vivipara</i>	Viviparous Sheep's-fescue	2008	Native		Local	16
<i>Filipendula ulmaria</i>	Meadowsweet	2008	Native		Very Common	40
<i>Fragaria vesca</i>	Wild Strawberry	2005	Native		Local	11

Fraxinus excelsior	Ash	2006	Native		Common	8
Fumaria muralis	Common Ramping-fumitory	1996	Native		Local	1
Fumaria officinalis	Common Fumitory	1996	Alien (A)		Local	1
Galanthus nivalis	Snowdrop	2006	Alien (N)		Frequent	10
Galeopsis bifida	Bifid Hemp-nettle	2006	Native		Local	4
Galeopsis speciosa	Large-flowered Hemp-nettle	1983	Alien (A)	Vulnerable	Local	2
Galeopsis tetrahit	Common Hemp-nettle	2008	Native		Local	6
Galeopsis tetrahit agg. (incl. G. bifida)	Common Hemp-nettle	2008	Native		Frequent	14
Galium aparine	Cleavers	2008	Native		Very Common	29
Galium boreale	Northern Bedstraw	2008	Native		Local	11
Galium mollugo	Hedge Bedstraw	1975	Native		Local	2
Galium palustre	Marsh-bedstraw	2008	Native		Frequent	30
Galium palustre subsp. palustre	Common Marsh-bedstraw	1998	Native		Local	1
Galium saxatile	Heath Bedstraw	2008	Native		Very Common	54
Galium sternerii	Limestone Bedstraw	2006	Native		Local	7
Galium uliginosum	Fen Bedstraw	2008	Native		Local	20
Galium verum	Lady's Bedstraw	2008	Native		Common	55
Genista anglica	Petty whin	2006	Native	Near Threatened	Local	17
Gentianella campestris	Field Gentian	2006	Native	BAP, Vulnerable	Local	11
Geranium dissectum	Cut-leaved Crane's-bill	1983	Alien (A)		Local	5
Geranium molle	Dove's-foot Crane's-bill	1996	Native		Local	4
Geranium pratense	Meadow Crane's-bill	2008	Native		Local	5
Geranium robertianum	Herb-Robert	2008	Native		Common	21
Geranium sylvaticum	Wood Crane's-bill	2008	Native		Local	18
Geum rivale	Water Avens	2008	Native		Frequent	23
Geum urbanum	Wood Avens	2008	Native		Frequent	21
Geum x intermedium	G. rivale x urbanum	2005	Native		Local	5
Glechoma hederacea	Ground-ivy	2008	Native		Frequent	14
Glyceria declinata	Small Sweet-grass	2001	Native		Local	7
Glyceria fluitans	Floating Sweet-grass	2008	Native		Frequent	23

Gnaphalium supinum	Dwarf Cudweed	1988	Native	Near Threatened	Scarce	2
Gnaphalium sylvaticum	Heath Cudweed	1982	Native	Endangered	Local	3
Gnaphalium uliginosum	Marsh Cudweed	2006	Native		Local	9
Goodyera repens	Creeping Lady's-tresses	1999	Native		Local	3
Gymnadenia conopsea	Fragrant Orchid	2008	Native		Local	29
Gymnadenia conopsea subsp. densiflora	Fragrant Orchid	1993	Native		Rare	1
Gymnocarpium dryopteris	Oak Fern	2008	Native		Local	13
Hedera helix	Common Ivy	2001	Native		Frequent	3
Helianthemum nummularium	Common Rock-rose	2008	Native		Local	34
Helictotrichon pratense	Meadow Oat-grass	2008	Native		Local	18
Helictotrichon pubescens	Downy Oat-grass	1983	Native		Scarce	3
Heracleum sphondylium	Hogweed	2006	Native		Very Common	38
Hesperis matronalis	Dame's-violet	2008	Alien (N)		Local	17
Hieracium agg.	Hawkweed	2008	Native		Local	32
Hieracium anglicum	A Hawkweed	1968	Native			2
Hieracium argenteum	A Hawkweed	1968	Native			2
Hieracium caesiomurorum	A Hawkweed	1969	Native			2
Hieracium chloranthum	A Hawkweed	1969	Native			1
Hieracium cravoniense	A Hawkweed	2005	Native			1
Hieracium dicella	A Hawkweed	1908	Native			1
Hieracium duriceps	A Hawkweed	1983	Native			1
Hieracium flocculosum	A Hawkweed	1983	Native			2
Hieracium iricum	A Hawkweed	1914	Native			1
Hieracium jovimontis	A Hawkweed	1983	Native			2
Hieracium petrocharis	A Hawkweed	1969	Native			1
Hieracium silvaticoides	A Hawkweed	1969	Native			2
Hieracium vulgatum	A Hawkweed	1998	Native			4
Holcus lanatus	Yorkshire-fog	2008	Native		Very Common	63
Holcus mollis	Creeping Soft-grass	2008	Native		Common	33

Huperzia selago	Fir Clubmoss	2002	Native		Local	4
Hyacinthoides non-scripta	Bluebell	1982	Native		Scarce	3
Hyacinthoides x massartiana	Hybrid Bluebell (H. non-scripta x hispanica)	2006	Alien (N)		Local	2
Hydrocotyle vulgaris	Marsh Pennywort	1990	Native		Local	1
Hypericum hirsutum	Hairy St John's-wort	2005	Native		Local	8
Hypericum maculatum subsp. obtusiusculum	Imperforate St John's-wort	2006	Native		Scarce	1
Hypericum perforatum	Perforate St John's-wort	1952	Native		Scarce	1
Hypericum pulchrum	Slender St John's-wort	2008	Native		Common	33
Hypericum tetrapterum	Square-stalked St John's-wort	1990	Native		Local	1
Hypochaeris radicata	Cat's-ear	2008	Native		Very Common	33
Iris pseudacorus	Yellow Iris	2006	Native		Local	3
Isolepis setacea	Bristle Club-rush	1998	Native		Local	4
Juncus acutiflorus	Sharp-flowered Rush	2008	Native		Frequent	21
Juncus articulatus	Jointed Rush	2008	Native		Common	35
Juncus balticus	Baltic Rush	2005	Native	Scarce	Scarce	8
Juncus bufonius	Toad Rush	2008	Native		Frequent	16
Juncus bulbosus	Bulbous Rush	2008	Native		Frequent	25
Juncus bulbosus subsp. kochii	Bulbous Rush	1981	Native		Scarce	4
Juncus conglomeratus	Compact Rush	2008	Native		Frequent	30
Juncus effusus	Soft-rush	2008	Native		Very Common	79
Juncus squarrosus	Heath Rush	2008	Native		Common	50
Juniperus communis subsp. communis	Juniper	2008	Native	BAP	Local	58
Koeleria macrantha	Crested Hair-grass	1954	Native		Scarce	1
Lamium purpureum	Red Dead-nettle	2004	Alien (A)		Frequent	7
Lapsana communis	Nipplewort	2006	Native		Frequent	10
Larix decidua	European Larch	2008	Alien (N)		Frequent	10
Larix x marschlinsii	Hybrid Larch (L. decidua x kaempferi)	2005	Alien (N)		Local	1

Lathyrus linifolius	Bitter-vetch	2008	Native		Frequent	37
Lathyrus linifolius var. tenuifolius	Bitter-vetch	1983	Native		Scarce	1
Lathyrus pratensis	Meadow Vetchling	2008	Native		Very Common	41
Lemna minor	Common Duckweed	2006	Native		Local	1
Leontodon autumnalis	Autumn Hawkbit	2006	Native		Frequent	36
Lepidium heterophyllum	Smith's Pepperwort	1972	Native		Local	1
Leucanthemum vulgare	Oxeye Daisy	2006	Native		Local	13
Levisticum officinale	Lovage	2001	Alien (N)		Scarce	3
Lilium pyrenaicum	Pyrenean Lily	2004	Alien (N)		Local	2
Linnaea borealis	Twinflower	2006	Native	BAP, Scarce	Scarce	2
Linum catharticum	Fairy Flax	2008	Native		Frequent	35
Listera cordata	Lesser Twayblade	2008	Native		Local	6
Listera ovata	Common Twayblade	2005	Native		Local	11
Lolium multiflorum	Italian Rye-grass	1980	Alien (N)		Local	5
Lolium perenne	Perennial Rye-grass	2008	Native		Common	32
Lonicera periclymenum	Honeysuckle	1996	Native		Frequent	3
Lotus corniculatus	Common Bird's-foot-trefoil	2008	Native		Very Common	59
Lotus pedunculatus	Greater Bird's-foot-trefoil	1994	Native		Local	2
Lupinus x regalis	Russell Lupin (L. arboreus x polyphyllus)	2005	Alien (N)		Scarce	1
Luzula campestris	Field Wood-rush	2008	Native		Frequent	21
Luzula multiflora	Heath Wood-rush	2008	Native		Very Common	73
Luzula multiflora subsp. congesta	Heath Wood-rush	2008	Native		Local	13
Luzula multiflora subsp. multiflora	Heath Wood-rush	2008	Native		Scarce	2
Luzula pilosa	Hairy Wood-rush	2008	Native		Frequent	19
Luzula sylvatica	Great Wood-rush	2008	Native		Very Common	37
Lychnis flos-cuculi	Ragged-Robin	2008	Native		Frequent	28
Lycopodium clavatum	Stag's-horn Clubmoss	2004	Native		Local	7
Lysimachia nemorum	Yellow Pimpernel	2008	Native		Local	23
Lythrum portula subsp. portula	Water-purslane	1983	Native		Scarce	2
Matricaria discoidea	Pineappleweed	2008	Alien (N)		Common	28

<i>Matricaria recutita</i>	Scented Mayweed	1954	Alien (A)		Rare	1
<i>Meconopsis cambrica</i>	Welsh Poppy	1984	Alien (N)		Local	1
Medicago lupulina	Black Medick	1984	Native		Local	4
Melampyrum pratense	Common Cow-wheat	2008	Native		Local	17
Melampyrum pratense subsp. pratense var. hians	Common Cow-wheat	1983	Native		Scarce	5
Melica nutans	Mountain Melick	2005	Native		Scarce	9
Mentha aquatica	Water Mint	1994	Native		Local	2
<i>Mentha x villosa</i>	Apple-mint	1982	Alien (N)		Scarce	1
Menyanthes trifoliata	Bogbean	1966	Native		Local	1
Mercurialis perennis	Dog's Mercury	2008	Native		Frequent	42
<i>Mimulus</i> agg. (excl. <i>M. moschatus</i>)	Monkeyflower	2008	Alien (N)		Common	42
<i>Mimulus guttatus</i>	Monkeyflower	2006	Alien (N)		Local	7
<i>Mimulus luteus</i>	Blood-drop-embels	2006	Alien (N)		Scarce	5
<i>Mimulus moschatus</i>	Musk	2006	Alien (N)		Scarce	3
<i>Mimulus x burnetii</i>	<i>M. cupreus</i> x <i>guttatus</i>	1983	Alien (N)		Rare	1
Moehringia trinervia	Three-nerved Sandwort	2005	Native		Local	11
Molinia caerulea	Purple Moor-grass	2008	Native		Frequent	31
Montia fontana	Blinks	2008	Native		Frequent	40
Montia fontana subsp. fontana	Blinks	1981	Native		Scarce	3
<i>Myosotis arvensis</i>	Field Forget-me-not	2008	Alien (A)		Frequent	22
<i>Myosotis arvensis</i> var. <i>sylvestris</i>	Field Forget-me-not	1983	Alien (A)		Scarce	1
Myosotis discolor	Changing Forget-me-not	2008	Native		Frequent	20
Myosotis laxa	Tufted Forget-me-not	2006	Native		Local	13
Myosotis ramosissima	Early Forget-me-not	1954	Native		Scarce	1
Myosotis scorpioides	Water Forget-me-not	2008	Native		Frequent	11
Myosotis secunda	Creeping Forget-me-not	2008	Native		Local	34
Myosotis sylvatica	Wood Forget-me-not	2001	Native		Local	3
Myrica gale	Bog-myrtle	2008	Native		Local	22
Myriophyllum alterniflorum	Alternate Water-milfoil	1912	Native		Scarce	1

Myrrhis odorata	Sweet Cicely	2008	Alien (N)		Frequent	25
Narcissus agg.	Cultivated Daffodil	2004	Alien (N)		Common	10
Nardus stricta	Mat-grass	2008	Native		Common	55
Narthecium ossifragum	Bog Asphodel	2008	Native		Frequent	32
Orchis mascula	Early-purple Orchid	2005	Native		Local	7
Oreopteris limbosperma	Lemon-scented Fern	2008	Native		Frequent	24
Origanum vulgare	Wild Marjoram	2006	Native		Scarce	20
Ornithogalum angustifolium	Star-of-Bethlehem	2004	Alien (N)		Local	2
Oxalis acetosella	Wood-sorrel	2008	Native		Very Common	43
Oxyria digyna	Mountain Sorrel	1980	Native		Scarce	4
Papaver dubium subsp. dubium	Long-headed Poppy	1981	Alien (A)		Local	3
Papaver pseudoorientale	Oriental Poppy	2008	Alien (N)		Scarce	2
Papaver rhoeas	Common Poppy	2005	Alien (A)		Scarce	1
Parnassia palustris	Grass-of-Parnassus	2005	Native		Local	5
Pedicularis palustris	Marsh Lousewort	2008	Native		Local	21
Pedicularis sylvatica	Lousewort	2008	Native		Local	25
Pentaglottis sempervirens	Green Alkanet	1983	Alien (N)		Local	2
Persicaria bistorta	Common Bistort	1983	Alien (N)		Local	4
Persicaria maculosa	Redshank	2006	Native		Frequent	8
Persicaria vivipara	Alpine Bistort	2008	Native		Frequent	45
Petasites albus	White Butterbur	2008	Alien (N)		Frequent	2
Petasites hybridus	Butterbur	1998	Native		Local	1
Peucedanum ostruthium	Masterwort	2008	Alien (A)	Near Threatened	Local	5
Phalaris arundinacea	Reed Canary-grass	2006	Native		Frequent	3
Phalaris arundinacea var. picta	Variiegated Reed Grass	2006	Alien (N)		Scarce	3
Phegopteris connectilis	Beech Fern	2008	Native		Local	6
Phleum bertolonii	Smaller Cat's-tail	2005	Native		Scarce	4
Phleum pratense	Timothy	2006	Native		Local	13
Picea abies	Norway Spruce	2006	Alien (N)		Local	5
Picea sitchensis	Sitka Spruce	2008	Alien (N)		Frequent	9

Pilosella officinarum	Mouse-ear-hawkweed	2008	Native		Frequent	54
Pilosella officinarum subsp. tricholepia	Mouse-ear-hawkweed	2001	Native		Rare	1
Pilosella officinarum subsp. trichosoma	Mouse-ear-hawkweed	1983	Native		Scarce	2
Pimpinella saxifraga	Burnet-saxifrage	2008	Native		Scarce	13
Pinguicula vulgaris	Common Butterwort	2008	Native		Frequent	47
Pinus contorta	Lodgepole Pine	2008	Alien (N)		Local	3
Pinus nigra	Austrian Pine / Corsican Pine	2004	Alien (N)		Scarce	1
Pinus sylvestris	Scots Pine	2008	Alien (N)		Common	22
Plantago lanceolata	Ribwort Plantain	2008	Native		Very Common	66
Plantago major	Greater Plantain	2008	Native		Very Common	36
Platanthera bifolia	Lesser Butterfly-orchid	1994	Native	BAP, Vulnerable	Local	1
Poa annua	Annual Meadow-grass	2008	Native		Common	40
Poa humilis	Spreading Meadow-grass	1994	Native		Local	10
Poa nemoralis	Wood Meadow-grass	2006	Native		Local	5
Poa palustris	Swamp Meadow-grass	1983	Alien (N)		Rare	1
Poa pratensis	Smooth Meadow-grass	2008	Native		Local	5
Poa pratensis sens. lat. (incl. P. humilis)	Smooth Meadow-grass	2008	Native		Frequent	27
Poa trivialis	Rough Meadow-grass	2008	Native		Frequent	39
Polemonium caeruleum	Jacob's-ladder	2008	Alien (N)		Scarce	3
Polygala serpyllifolia	Heath Milkwort	2008	Native		Frequent	42
Polygala vulgaris	Common Milkwort	2001	Native		Local	8
Polygonum arenastrum	Equal-leaved Knotgrass	1996	Alien (A)		Local	5
Polygonum aviculare	Knotgrass	2006	Native		Frequent	11
Polygonum aviculare agg. (incl. P. arenastrum)	Knotgrass	2008	Native		Frequent	25
Polypodium vulgare	Polypody	2008	Native		Frequent	15
Populus alba	White Poplar	1982	Alien (N)		Scarce	3
Populus tremula	Aspen	2008	Native		Local	33

Potamogeton alpinus	Red Pondweed	1906	Native		Rare	1
Potamogeton natans	Broad-leaved Pondweed	1972	Native		Local	1
Potamogeton polygonifolius	Bog Pondweed	2008	Native		Local	15
Potentilla anserina	Silverweed	2008	Native		Frequent	4
Potentilla erecta	Tormentil	2008	Native		Very Common	71
Potentilla erecta subsp. erecta						1
	Tormentil	1981	Native		Very Common	Under recorded
Potentilla erecta subsp. strictissima	Tormentil	1983	Native		Scarce	1
Potentilla palustris	Marsh Cinquefoil	2008	Native		Local	11
Potentilla sterilis	Barren Strawberry	2008	Native		Local	16
Primula veris	Cowslip	2007	Native		Scarce	11
Primula vulgaris	Primrose	2008	Native		Frequent	20
Primula x polyantha	False Oxlip (<i>P. veris</i> x <i>vulgaris</i>)	2007	Native		Rare	4
Prunella vulgaris	Selfheal	2008	Native		Very Common	50
Prunus avium	Wild Cherry	2008	Native		Frequent	14
Prunus padus	Bird Cherry	2008	Native		Local	26
Prunus spinosa	Blackthorn	2006	Native		Local	11
Pseudorchis albida	Small-white Orchid	1990	Native	BAP, Vulnerable	Rare	3
<i>Pseudotsuga menziesii</i>	Douglas Fir	2005	Alien (N)		Local	2
Pteridium aquilinum	Bracken	2008	Native		Common	31
Puccinellia distans subsp. distans	Reflexed Saltmarsh-grass	2006	Native		Scarce	1
<i>Pulmonaria officinalis</i>	Lungwort	2006	Alien (N)		Local	2
Pyrola media	Intermediate Wintergreen	1981	Native	Vulnerable	Scarce	2
Pyrola minor	Common Wintergreen	1974	Native		Local	2
Quercus robur	Pedunculate Oak	2006	Native		Local	3
<i>Ranunculus aconitifolius</i>	Aconite-leaved Buttercup	2004	Alien (N)		Scarce	1
Ranunculus acris	Meadow Buttercup	2008	Native		Very Common	64
Ranunculus bulbosus	Bulbous Buttercup	2004	Native		Local	7
Ranunculus ficaria	Lesser Celandine	2004	Native		Common	10
Ranunculus ficaria subsp. bulbifer	Lesser Celandine	1982	Native		Local	3

Ranunculus ficaria subsp. ficaria	Lesser Celandine	1996	Native		Common	1
Ranunculus flammula	Lesser Spearwort	2008	Native		Frequent	40
Ranunculus hederaceus	Ivy-leaved Crowfoot	2008	Native		Local	6
Ranunculus repens	Creeping Buttercup	2008	Native		Very Common	58
Rheum x hybridum	Rhubarb	2006	Alien (N)		Local	3
Rhinanthus minor	Yellow-rattle	2008	Native		Frequent	35
Rhinanthus minor subsp. borealis	Yellow-rattle	1968	Native		Rare	1
Rhinanthus minor subsp. minor	Yellow-rattle	1974	Native		Rare	1
Rhinanthus minor subsp. monticola	Yellow-rattle	1968	Native		Rare	1
Rhinanthus minor subsp. stenophyllus	Yellow-rattle	1982	Native		Local	3
Ribes nigrum	Black Currant	2008	Alien (N)		Local	9
Ribes rubrum	Red Currant	2004	Alien (N)		Local	7
Ribes sanguineum	Flowering Currant	2008	Alien (N)		Local	5
Ribes uva-crispa	Gooseberry	2006	Alien (N)		Frequent	10
Rorippa microphylla	Narrow-fruited Water-cress	1983	Native		Scarce	1
Rorippa nasturtium-aquaticum	Water-cress	1982	Native		Local	2
Rorippa nasturtium-aquaticum agg.	Water-cress	2008	Native		Local	14
Rosa caesia subsp. glauca	Glaucous Dog-rose	1981	Native		Rare	2
Rosa canina agg.	Dog-rose	1980	Native		Local	2
Rosa mollis	Soft Downy-rose	1996	Native		Scarce	1
Rosa mollis agg. (records probably include R. sherardii & hybrids)	Downy-rose	1983	Native		Local	7
Rosa pimpinellifolia	Burnet Rose	1981	Native		Local	3
Rosa rubiginosa agg.	Sweet-briar	1974	Native		Rare	2
Rosa sherardii	Sherard's Downy-rose	1980	Native		Scarce	1
Rosa sp. (excl. R. pimpinellifolia)	A Rose	2008	Native		Very Common	54
Rubus chamaemorus	Cloudberry	2006	Native		Frequent	13
Rubus fruticosus agg.	Bramble	1990	Native		Common	1
Rubus idaeus	Raspberry	2008	Native		Very Common	45

Rubus saxatilis	Stone Bramble	2005	Native		Local	10
Rumex acetosa	Common Sorrel	2008	Native		Very Common	62
Rumex acetosella	Sheep's Sorrel	2008	Native		Frequent	36
Rumex acetosella subsp. acetosella	Sheep's Sorrel	1998	Native		Local	8
Rumex crispus	Curled Dock	2006	Native		Local	11
Rumex longifolius	Northern Dock	2006	Native		Frequent	20
Rumex obtusifolius	Broad-leaved Dock	2008	Native		Very Common	55
Rumex pseudoalpinus	Monk's-rhubarb	2008	Alien (A)	Near Threatened	Local	16
Rumex sanguineus	Wood Dock	1981	Native		Local	2
Sagina apetala	Annual Pearlwort	1983	Native		Rare	1
Sagina nodosa	Knotted Pearlwort	2006	Native		Local	10
Sagina procumbens	Procumbent Pearlwort	2008	Native		Common	41
Salix aurita	Eared Willow	2008	Native		Frequent	35
Salix caprea	Goat Willow	2008	Native		Frequent	37
Salix cinerea	Grey Willow	2006	Native		Frequent	14
Salix cinerea subsp. oleifolia	Rusty Willow	1998	Native		Local (probably under-recorded)	7
Salix myrsinifolia	Dark-leaved Willow	1983	Native		Scarce	4
Salix pentandra	Bay Willow	1996	Native		Local	1
Salix phylicifolia	Tea-leaved Willow	1981	Native		Scarce	6
Salix repens	Creeping Willow	2008	Native		Local	31
Salix viminalis	Osier	2008	Alien (A)		Local	2
Salix x multinervis	S. aurita x cinerea	2008	Native		Local (under-recorded)	19
Sambucus nigra	Elder	2008	Native		Common	12
Sambucus racemosa	Red-berried Elder	2006	Alien (N)		Local	4
Sanicula europaea	Sanicle	2001	Native		Local	3
Saxifraga aizoides	Yellow Saxifrage	2008	Native		Local	26
Saxifraga hypnoides	Mossy Saxifrage	1975	Native	Vulnerable	Scarce	1
Saxifraga oppositifolia	Purple Saxifrage	2005	Native		Scarce	8
Saxifraga stellaris	Starry Saxifrage	2008	Native		Local	14

Scilla bifolia	Alpine Squill	2004	Alien (N)		Rare	1
Scilla siberica	Siberian Squill	2004	Alien (N)		Scarce	2
Scrophularia nodosa	Common Figwort	2006	Native		Local	8
Sedum acre	Biting Stonecrop	2001	Native		Local	4
Sedum album	White Stonecrop	1983	Alien (A)		Scarce	3
Sedum anglicum	English Stonecrop	1990	Alien (N)		Rare	1
Sedum telephium	Orpine	1974	Native?		Scarce	2
Sedum villosum	Hairy Stonecrop	1997	Native	Near Threatened	Local	8
Selaginella selaginoides	Lesser Clubmoss	2008	Native		Local	13
Senecio aquaticus	Marsh Ragwort	2005	Native		Local	5
Senecio jacobaea	Common Ragwort	2008	Native		Very Common	48
Senecio vernalis	Eastern Groundsel	1984	Alien (N)		Rare	2
Senecio vulgaris	Groundsel	2008	Native		Frequent	12
Silene dioica	Red Campion	2008	Native		Frequent	20
Silene latifolia	White Campion	1984	Alien (A)		Local	2
Sinapis arvensis	Charlock	2008	Alien (A)		Local	6
Solidago gigantea	Early Goldenrod	2006	Alien (N)		Rare	1
Solidago virgaurea	Goldenrod	2006	Native		Local	13
Sonchus asper	Prickly Sow-thistle	2006	Native		Frequent	8
Sonchus oleraceus	Smooth Sow-thistle	2005	Native		Local	4
Sorbus aucuparia	Rowan	2008	Native		Very Common	67
Sparganium erectum	Branched Bur-reed	1996	Native		Local	1
Spergula arvensis	Corn Spurrey	2006	Alien (A)	Vulnerable	Frequent	7
Spergularia marina	Lesser Sea-spurrey	2006	Native		Local	8
Spergularia rubra	Sand Spurrey	2006	Native		Local	1
Spiraea agg.	Bridewort	1983	Alien (N)		Local	2
Stachys palustris	Marsh Woundwort	2006	Native		Local	1
Stachys sylvatica	Hedge Woundwort	2008	Native		Common	37
Stellaria graminea	Lesser Stitchwort	2008	Native		Frequent	25
Stellaria holostea	Greater Stitchwort	2008	Native		Frequent	27

Stellaria media	Common Chickweed	2008	Native		Common	37
Stellaria uliginosa	Bog Stitchwort	2008	Native		Common	58
Succisa pratensis	Devil's-bit Scabious	2008	Native		Common	56
Symphoricarpos albus	Snowberry	2008	Alien (N)		Local	6
Symphytum tuberosum	Tuberous Comfrey	2004	Native		Frequent	5
Tanacetum parthenium	Feverfew	1980	Alien (A)		Local	3
Tanacetum vulgare	Tansy	2008	Alien (N)		Local	1
Taraxacum agg.	Dandelion	2008	Native		No specialist recording of micro-species since 1983	104
Taraxacum argutum	A Dandelion	1982	Native			1
Taraxacum cyanolepis	A Dandelion	1983	Native			3
Taraxacum duplidentifrons	A Dandelion	1983	Native			1
Taraxacum ekmanii	A Dandelion	1974	Native			1
Taraxacum euryphyllum	A Dandelion	1979	Native			2
Taraxacum faeroense	A Dandelion	2008	Native			11
Taraxacum fulvicarpum	A Dandelion	1983	Native			2
Taraxacum gotlandicum	A Dandelion	1969	Native			1
Taraxacum hamatiforme	A Dandelion	1974	Native			1
Taraxacum hamiferum	A Dandelion	1983	Native			1
Taraxacum lacistophyllum	A Dandelion	1979	Native			2
Taraxacum luteum	A Dandelion	1982	Native			1
Taraxacum maculosum	A Dandelion	1983	Native			4
Taraxacum naevosiforme	A Dandelion	1983	Native			2
Taraxacum naevosum	A Dandelion	1983	Native			2
Taraxacum nordstedtii	A Dandelion	1983	Native			4
Taraxacum ostenfeldii	A Dandelion	1970	Native			1
Taraxacum polyodon	A Dandelion	1983	Native			2
Taraxacum proximiforme	A Dandelion	1979	Native			2
Taraxacum scoticum	A Dandelion	1982	Native			1
Taraxacum subnaevosum	A Dandelion	1982	Native			1
Taraxacum undulatiflorum	A Dandelion	1983	Alien (N)			1

Taraxacum unguilobum	A Dandelion	1983	Native			3
Telekia speciosa	Yellow Oxeye	2005	Alien (N)		Rare	2
Teucrium scorodonia	Wood Sage	2005	Native		Local	2
Thlaspi arvense	Field Penny-cress	1973	Alien (A)		Local	3
Thymus polytrichus	Wild Thyme	2008	Native		Frequent	37
Tilia x europaea	Lime	1982	Alien (N)		Local	5
Tofieldia pusilla	Scottish Asphodel	2008	Native		Local	11
Torilis japonica	Upright Hedge-parsley	2005	Native		Local	1
Trichophorum cespitosum	Deergrass	2008	Native		Frequent	23
Torientalis europaea	Chickweed-wintergreen	2008	Native		Frequent	33
Trifolium campestre	Hop Trefoil	2004	Native		Local	1
Trifolium dubium	Lesser Trefoil	1996	Native		Local	2
Trifolium medium	Zigzag Clover	2008	Native		Frequent	21
Trifolium pratense	Red Clover	2008	Native		Common	45
Trifolium repens	White Clover	2008	Native		Very Common	56
Triglochin palustre	Marsh Arrowgrass	2008	Native		Local	34
Tripleurospermum inodorum	Scentless Mayweed	2006	Alien (A)		Frequent	16
Trollius europaeus	Globeflower	2008	Native		Local	10
Tulipa gesneriana	Garden Tulip	2004	Alien (N)		Local	1
Tussilago farfara	Colt's-foot	2008	Native		Very Common	55
Ulex europaeus	Gorse	2008	Native		Very Common	38
Ulmus glabra	Wych Elm	2008	Native		Frequent	15
Urtica dioica	Common Nettle	2008	Native		Very Common	80
Urtica urens	Small Nettle	1996	Alien (A)		Local	3
Vaccinium microcarpum	Small Cranberry	2008	Native	Scarce	Scarce	3
Vaccinium myrtillus	Bilberry	2008	Native		Very Common	40
Vaccinium vitis-idaea	Cowberry	2008	Native		Frequent	25
Valeriana officinalis	Common Valerian	2008	Native		Frequent	10
Verbascum thapsus	Great Mullein	2004	Alien (N)		Local	3
Veronica agrestis	Green Field-speedwell	1954	Alien (A)		Local	2

Veronica arvensis	Wall Speedwell	2008	Native		Local	18
Veronica beccabunga	Brooklime	2008	Native		Frequent	31
Veronica chamaedrys	Germander Speedwell	2008	Native		Very Common	66
Veronica filiformis	Slender Speedwell	2008	Alien (N)		Frequent	7
Veronica hederifolia	Ivy-leaved Speedwell	1983	Alien (A)		Local	2
Veronica hederifolia subsp. hederifolia	Ivy-leaved Speedwell	1982	Alien (A)		Scarce	1
Veronica officinalis	Heath Speedwell	2008	Native		Frequent	37
Veronica persica	Common Field-speedwell	2004	Alien (N)		Local	3
Veronica scutellata	Marsh Speedwell	2006	Native		Local	8
Veronica serpyllifolia	Thyme-leaved Speedwell	2008	Native		Frequent	32
Veronica serpyllifolia subsp. humifusa	Thyme-leaved Speedwell	2008	Native	Near Threatened	Scarce	3
Veronica serpyllifolia subsp. serpyllifolia	Thyme-leaved Speedwell	2008	Native		Frequent	14
Viburnum opulus	Guelder-rose	1980	Native?		Scarce	1
Vicia cracca	Tufted Vetch	2006	Native		Frequent	18
Vicia hirsuta	Hairy Tare	1984	Native		Local	2
Vicia sativa	Common Vetch	2004	Native		Local	4
Vicia sativa subsp. nigra	Narrow-leaved Vetch	1984	Native		Local	2
Vicia sepium	Bush Vetch	2008	Native		Common	33
Vicia sylvatica	Wood Vetch	2005	Native		Local	6
Viola arvensis	Field Pansy	1996	Alien (A)		Local	3
Viola canina	Heath Dog-violet	2006	Native	Near Threatened	Local	6
Viola hirta	Hairy Violet	1980	Alien (N)		Rare	1
Viola lutea	Mountain Pansy	2008	Native		Local	13
Viola palustris	Marsh Violet	2008	Native		Frequent	40
Viola riviniana	Common Dog-violet	2008	Native		Very Common	57
Viola riviniana subsp. minor	Common Dog-violet	1982	Native		Rare	1
Viola tricolor subsp. tricolor	Wild Pansy	1990	Native	Near Threatened	Local	6