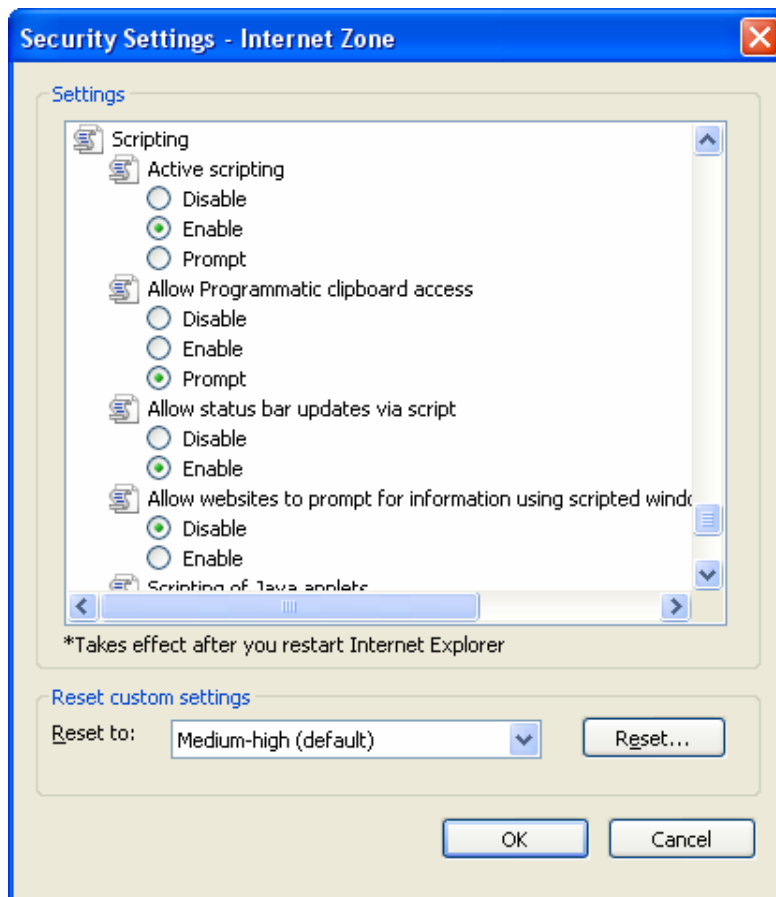


To display cursor Grid References when using the BSBI Maps Scheme

It is really useful to be able read position the cursor and read off hectad grid references of specific dots when viewing the BSBI Maps Scheme.

To do that open Internet Explorer and assuming you have a recent version (e.g. version 8) Tools > Internet Options > Security Tab > Custom Level and scroll down until you see the window below, and adjust the settings to match - Enable “Active Scripts” and Enable “Allow status bar updates via script”.

Then OK, then Apply (if not greyed out) and finally OK. Then close Internet Explorer and relaunch.



Also if your Internet Browser is not set up to display the Status Bar you will need to do that: right click on the area to the left of the tool bar and click on Status Bar if it is not already ticked.