

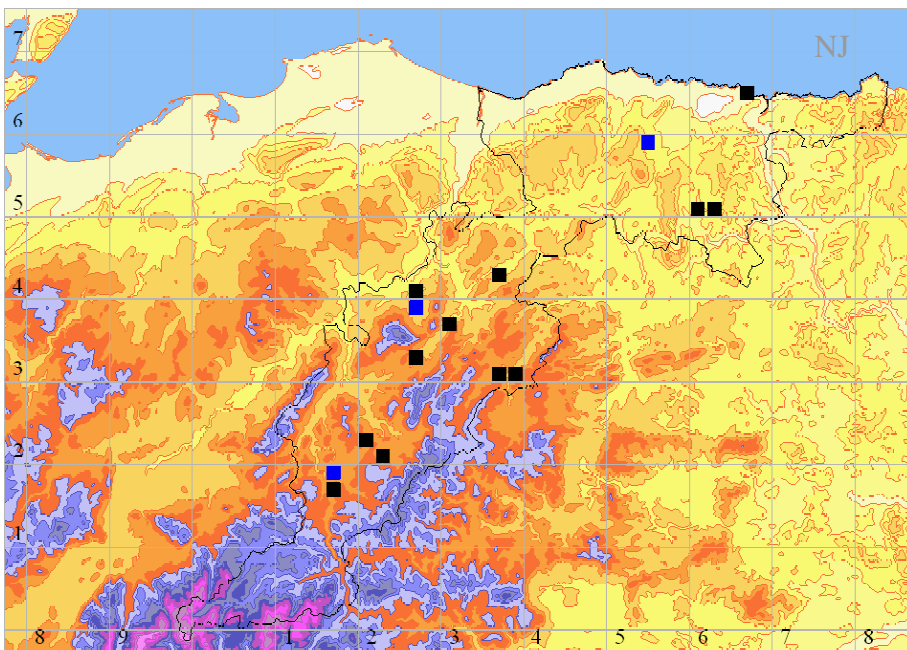
Peucedanum ostruthium (Masterwort) in Banffshire (v.c. 94)

Peucedanum ostruthium is a Nationally Scarce archaeophyte, recorded from 85 tetrads in GB & Ireland in the period 1987 – 1999 (Preston et al 2002), and is classified as *Near Threatened* (Cheffings and Farrell 2005). In GB it has a northern distribution, from the Peak District to NE Scotland, Orkney and Shetland.



In Banffshire, *P. ostruthium* has been recorded from 12 tetrads in 9 hectads in the period 1980 – 2009 (Amphlett 2010). Altitude can be estimated for 15 of the post 1980 sites: median 255m (IQ range 125 – 318m). The highest site, a trackside hedgerow behind Braes of Glenlivet Hall is at 360m AOD. 13 of these sites have habitat data: 7 are by rivers or burns, 6 on road or track sides. Records for the period 1980 – 2009 are summarised in Table 1 below.

P. ostruthium is a relic of deliberate introduction, mainly for veterinary use with cattle (Allen & Hatfield 2004) and as a pot-herb – it smells strongly of celery (Preston et al 2002).



Tetrad distribution of *Peucedanum ostruthium* in Banffshire. Tetrads with records for the period 1980 – 2009 are in black, pre-1980 in blue. Relief shading is at 50 m intervals up to 200 m AOD, then at 100m intervals. Areas above 500 m AOD are in blue, and above 900 m in pink (Digital Map Data Copyright © Bartholomew 2007). The vice-county boundary is shown as a black line (© All rights reserved. National Biodiversity Network Trust and Crown Copyright 2003).

References

- Allen, D.E. and Hatfield, G. (2004). *Medicinal Plants in Folk Tradition. An Ethnobotany of Britain & Ireland*. Cambridge.
- Amphlett, A. (2010). The Flora of Banffshire – An Annotated Checklist.
<http://www.bsbi.org.uk/html/banffshire.html>
- Cheffings, C. and Farrell, L. (Eds.) (2005). *The Vascular Plant Red Data List for Great Britain*. JNCC.
- Preston, C.D., Pearman, D.A. and Dines, T.D. (2002). *New Atlas of the British and Irish Flora*. OUP, Oxford.

10km Square	Tetrad	Year	Recorder	Site Name	Gridref	Comment
NJ11	NJ11T	1983	McCallum Webster, M.	Delnabo	NJ1617	Near bridge, Delnabo Lodge
		1982	McCallum Webster, M.	Delnabo	NJ11NE	
		1983	BSBI Field Meeting	Tomintoul	NJ11	
NJ22	NJ22B	1983	McCallum Webster, M.	Roadside near Pole Inn	NJ2123	
	NJ22F	2008	Amphlett, A.	Track behind Braes of Glenlivet Hall	NJ237216	Small patch, 0.5 x 0.5m in hedge of cottage.
		2009	Amphlett, A.	Braes of Glenlivet Hall	NJ239217	Patch 4 x 1m and 6 x 1m either side of footpath, immediately behind Hall. Found in 2008.
NJ23	NJ23R	2004	Amphlett, A.	B9009 NE of Bregach Farm	NJ26163227	Patch, 2.5 X 1.5m, on road verge, NW side of B9009.
		2006	Amphlett, A.	Elliv Reid	NJ268323	Along 38m length of roadside bank, under scrub, on west side of road, immediately south of Elliv Reid farm.
NJ24	NJ24Q	2007	Amphlett, A.	S. of Glenallachie: Burn of Aberlour	NJ265408	One plant by bridge over burn.
NJ33	NJ33D	2004	Amphlett, A.	Dullan Water	NJ305368	On right bank of burn, near where powerline crosses burn. Two patches, 6 x 2m and 3 x 2m.
						Immediately upstream and downstream of road bridge over Burn Trebble.
	NJ33Q	2006	Amphlett, A.	Bridgend	NJ374317	
	NJ33V	1999	BSBI Field Meeting	Bridgend: R. Deveron	NJ387315	Bank of R. Deveron. 20+ plants
NJ34	NJ34R	2004	Amphlett, A.	Minor road down to East end of Loch Park	NJ36694356	Patch on verge, W. side of minor road, by trees.
NJ43		1984	McCallum Webster, M.	Craigs of Succoth (NW Quadrant)	NJ43NW	
		1984	McCallum Webster, M.	Beldorney	NJ43NW	
NJ65	NJ65A	1987	BSBI Field Meeting	Auchintoul+Janefield.	NJ6151	
		2004	Amphlett, A.	South of Mill of Auchintoul	NJ613513	2 patches, 2x1m and 2x0.5m on verge of minor road where small burn flows under road.
		2004	Amphlett, A.	South of Mill of Auchintoul	NJ613512	Patch on bank of burn where burn comes close to minor road, c.45m S. of 2 patches at NJ613513.
	NJ65F	2009	Green, Ian P.	Aberchirder (S. of)	NJ626519	Growing on both banks of burn by bridge
NJ66	NJ66S	1997	Edelsten, J.	East of Red Well	NJ662652	

Table 1. *Peucedanum ostruthium* records from v.c. 94, 1980 – 2009.